

# COMMUNITY HEALTH NEEDS ASSESSMENT



2022

Marion County, Iowa

# Community Health Needs Assessment

MARION COUNTY, IOWA

## CONTENTS

<b>EXECUTIVE SUMMARY .....</b>	<b>4</b>
2022 Community Health Needs Assessment .....	4
Community Health Needs Assessment Strengths.....	5
Knoxville Hospital and Clinics and Marion County Public Health Department.....	5
Primary Service Area Community Health Strengths.....	5
Town Hall - Community Health Opportunities Identified .....	5
Town Hall Outcomes - Community Health Opportunities .....	5
Community Health Needs Assessment Survey - General Feedback.....	5
Community Health Needs Assessment Survey - Results of Opportunities .....	6
CHNA Survey – Needs for Health Concerns .....	6
CHNA Survey – Program Needs for Health Concerns (above).....	6
Iowa Health Rankings: Knoxville Hospital & Clinics and Marion County Public Health.....	6
<b>METHODOLOGY .....</b>	<b>8</b>
Scope and Purpose .....	8
Assessing Community Health Needs.....	8
Process to Complete a CHNA .....	8
Steps to Complete the CHNA.....	8
Steps in Process for CHNA including Timelines / Milestones.....	9
Model for Needs Assessment Process and Steps.....	9
Community Served / Profile Description.....	10
Marion County, Iowa Community Map .....	10
Portion of Marion County, Iowa for Needs Assessment - Specifics.....	10
Detailed Demographics – Marion County, Iowa .....	10
Collaborating CHNA Parties.....	11
Knoxville Hospital and Clinics Profile .....	11
Marion County Public Health Department Profile .....	12
Pavelka's Point Consulting, LLC – External Consulting Services.....	13
Community Health Needs Assessment Process .....	13
Agreement/Contracting/Community Leadership (CHNA Steps 1 – 3) .....	13
Create the assessment, survey, and evaluation process (CHNA Steps 4) .....	14
Collect the Data (CHNA Steps 5) .....	14
Analyze the Data (CHNA Steps 5 continued) .....	18
Town Hall Research Process (Engage & Prioritize with Stakeholders).....	19

Document and Define Priorities (CHNA Steps 6).....	19
Town Hall Outcomes.....	24
Community Strategy Formulation and Action Planning .....	25
Planning for Improvement Strategies (CHNA Steps 7 & 8) .....	25
Evaluation of Progress on Key Priorities and Strategic Alignment (CHNA Step 9).....	27
<b>COMMUNITY HEALTH STATUS .....</b>	<b>27</b>
Primary Research Findings.....	27
Community Health Needs: Survey Results 2022.....	27
Personal Health Needs: Survey Results .....	37
Primary Data (Survey) Demographics of Participants .....	40
Secondary Research Findings.....	44
<b>INVENTORY OF EXISTING COUNTY RESOURCES .....</b>	<b>54</b>
Community Health Partners – Detailed List .....	54
Community Resources – Inventory of Services.....	58
Inventory of Health Services – Marion County, Iowa .....	58
Providers Delivering Care – Marion County, Iowa .....	61
Service Directory .....	63
<b>DATA DETAILS .....</b>	<b>66</b>
Plan Tactics for Marion County, Iowa – 2019 to 2022.....	66
Iowa Hospital Data (Secondary Research) .....	67
CHNA Survey Detailed Survey, Findings (Primary Research).....	71
Town Hall Meeting Outcomes (Primary Research) .....	82
Top Priorities (votes for top actions) .....	82
Implementation of Priorities in Action Plan – listed prior in report .....	82
<b>CONTACT INFORMATION AND QUESTIONS .....</b>	<b>82</b>
Hospital Contact .....	82
Consultant Contact.....	82

## EXECUTIVE SUMMARY

### 2022 Community Health Needs Assessment

Community Health Needs Assessments are ongoing processes that systematically evaluate the health needs of the community to improve the health of the population. After the passage of the Patient and Protection and Affordable Care Act of 2012, 501 (c)(3) hospital organizations were given four new tax requirements to begin in tax years after March 23<sup>rd</sup>, 2012 (Stall, 2012). These new tax requirements were birthed from the growing concern over non-profit hospitals not providing sufficient community benefit as required by their tax-exempt status (Principe, K., Adams, E. K., Maynard, J., & Becker, E. R, 2012). The four tax requirements included, the implementation of written financial assistance policies, the limitation of charges for emergency or necessary care, adherence to new billing and collection restrictions, and the fourth requirement mandated that non-profit hospitals perform Community Health Needs Assessments (CHNA) (Stall, 2012).

In the past Community Health Needs Assessments, the benefits for both the local hospital organizations, health department and the community were stated in the following methods:

1. Identify key community health concerns, perceptions, and resources, while creating opportunity for collaboration in delivery of services.
2. Find a common understanding of and analyze community health needs, then prioritize with implementation strategies.
3. Provides guidance to the hospital and local health departments for how they can align their services and community benefit programs to best meet needs.
4. Focus organization's efforts for improvement and structure for addressing social determinates of health in building a relationship between and among stakeholders. All stakeholders can then contribute to improving the health of the community.
5. Provides rationale for current and potential funders to support efforts to improve the health of the community.

Principe, K., Adams, E. K., Maynard, J., & Becker, E. R. (2012). The impact of the individual mandate and Internal Revenue Service Form 990 Schedule H on community benefits from nonprofit hospitals. *American journal of public health*, 102(2), 229-237

Rosenbaum, S. (2013). Principles to Consider for the Implementation of Community Health Needs Assessments. *The George Washington University*. Washington, DC

Stall, E. (2012). Community Health Needs Assessment: 5 Phases to Compliance. Retrieved from <https://www.beckershospitalreview.com/legal-regulatory-issues/community-health-needs-assessment-5-phases-to-compliance.html>

## Community Health Needs Assessment Strengths

Knoxville Hospital and Clinics and Marion County Public Health Department Primary Service Area Community Health Strengths	
1.	Community Participants are generally satisfied with the quality and services from Knoxville Hospital and Clinics and Public Health. Medicare rating is higher than the national average and the state.
2.	Access to specialist at the Knoxville Hospital and Clinics continues to improve.
3.	Improvements over the last 3 to 6 years in the areas of premature deaths and underinsured population.
4.	Improvements in the community's county health rankings in the hospital related areas of decrease in the number on un-insured residents, decreased preventable hospital stay (days), mammogram screenings have improved, and flu vaccination rate is increasing (CMS Compare Report).
5.	Positive changes to the demographics within the community were residents increased in the community, those in severe housing issues decreased slightly, and high school graduation rates were strong (96%).
6.	Child health vaccinations continue to improve over the last three years up to 90.12% from 59 % in 2015.
7.	Some social behavioral choices remain strong or slightly improved, including lower than state average teen births, food security rates, unemployment, and overall health factors ratings are better than the state in many categories.

## Town Hall - Community Health Opportunities Identified

Town Hall Outcomes - Community Health Opportunities	
1.	<b>Mental Health: Increase the provided and breadth of services for Mental Health needs in the communities.</b> Ranking high for access, marketing/awareness of services and training for providers.
2.	<b>Increase the availability of affordable housing in the community.</b> Develop/Formalize countywide impact plan to address homelessness.
3.	<b>Transportation (Ability to gain access) make accessible for individuals to use with reasonable access and affordability:</b> Ranking high in need areas of off-hours transportation services, urgent transport needs, community engagement for services and routes to high traffic access points such as day-care and preschools.
4.	<b>Healthy Food Options:</b> Increase the availability of affordable health food options for members of the community.

## Community Health Needs Assessment Survey - General Feedback

The following were general feedback sections from the Community Health Needs Assessment Survey in which 140 community participants completed the survey either via paper or electronic formats. The details of the survey process can be found later in this report.

- The percent of Marion County, Iowa survey participants who would rate the overall quality of care as either Very Good or Good is 93%, up 10% since 2018 (2012 = 65.1%, 2016 = 67.5%, 2019 = 83%)

- Marion County, Iowa survey participants are satisfied with the following hospital services: Ambulance Services/ ER services, Family Practice, Specialty Providers, and Outpatient Services. Participants are satisfied with the following community services: Childcare, Chiropractor, Eye Doctor, Dentist, Pharmacy, Hospital, Home health, Hospice, Public Health, and School Nursing.
- Marion County, Iowa survey participants are NOT satisfied or neutral with the following services: Mental Health, Teen health, family planning, child and young adult health services, and Nursing Home services (neutral).
- The percent of participants who have received healthcare services outside of the community over the past two years has decreased slightly to 58.6% (from 79.4% in 2016, from 59.8% in 2019). Of those that provided the type of service here are the services in which they traveled out of the community: Neurology, Surgery, Obstetrics, Cancer treatment, Dermatology, Mental Health, Endocrinology, Bariatric Care, and Nephrology services.
- Marion County, Iowa participants believed there are opportunities for both health concerns and programs to combat the health concerns. The top perceptions of needs are listed in the following two tables as Results of Opportunities.

## Community Health Needs Assessment Survey - Results of Opportunities

CHNA Survey – Needs for Health Concerns	
1. Mental Illness (86.2%)	2. Drug/Illegal substance (67.4%)
3. Suicide (66.7%)	4. Teen Health (59.4%)
5. Obesity (53.6%)	6. Abuse and violence (50.7%)
7. Alcohol use (47.1%)	8. Nutrition (42.0%)
9. Aging (Dementia) (39.1%)	10. Poverty (38.4%)

CHNA Survey – Program Needs for Health Concerns (above)	
1. Mental Health counseling (89.0%)	2. Public Transportation (41.2%)
3. After hours pharmacy services (35.3%)	4. Elder assistance programs (33.8%)
5. Public awareness of services (33.1%)	6. Chronic disease prevention (30.1%)
7. Access to Urgent Care (30.1%)	8. Obstetrics (family planning and pregnancy services) (29.4%)
9. Family assistance programs (25.7%)	10. Wellness options (24.3%)

## Iowa Health Rankings: Knoxville Hospital & Clinics and Marion County Public Health

According to the 2022 Robert Wood Johnson County Health Rankings study, Marion County, Iowa has the following comparisons. More details can be found in later sections of this report.

- **Demographics and Age:** Marion County, Iowa has a population of 33,380 residents as of 2021, a decrease of -0.1% since 2020. The county population consists of 18.4% at or over the ages of 65 years, an increase of 4.5% since 2019 and the state average is 17.5%. In the under 18 age group the rate is at 23.5%, down from the 2019 number of 25.3%. The county is considered 49% rural.

- **Diversity:** Marion County, Iowa has 0% of the population that is considered non-proficient in English as a first language. The county has approximately 3.54% Hispanic population, and 1.2% African-American, American Indian, and Asian combined. Females make up approximately 52.70% of the population.
- **Income:** Marion County, Iowa median household income is \$64,136 (Iowa average of \$61,836) and unemployment is at 1.7% (Iowa 2.7%). Regarding the effects of income on the children in the county, 9.7% of the children live in poverty and 29% are eligible for free or reduced-price lunches (2019 – 31% were eligible and Iowa average of 41%).
- **Housing and Commutes:** The county is rated with 11% severe housing issues (Iowa overall at 12%, a increase of 2.0% from 2019). For employment, 25% of the population have long commutes to work and 80% drive alone (Iowa is at 21% and 80% respectively).
- **Education:** The percent of high school graduation is at 93.9% and a strength in county rankings (Iowa 92.5%). For college education, Marion County, Iowa has 74% of the population with some college (Iowa 71%).
- **Prenatal Care:** According to Iowa Health Fact Book, as of 2020, 629 mothers started Prenatal care in the first trimester, for a ranking of 20 out of the 99 counties in Iowa. The number of mothers that smoked during pregnancy was 89 (164 in 2019), for an Iowa rank of 19.
- **Primary Care and Hospital Services:** The ratio of population to primary care providers decreased slightly than 2019 report with 1,010 residents to 1 provider (Iowa ratio of 1,350:1), 2019 ratio was 1,140:1). The percent of patient who gave their hospital a rating of 9 or 10 (scale 0 lowest to 10 highest) was 91% on CMS Hospital Compare report which is a 10% improvement from 2019. This is higher than the Iowa average of 79% and National average of 73%. Preventable Hospital stays were below the Iowa number at 2,980 stays (Iowa 3,134).
- **Insured:** The uninsured adult population rate in Marion County, Iowa is 4%, slightly lower than the Iowa rate of 6%, however less than then 2016 report by 8.5% and the same 4% as the 2019 report. The uninsured rate for children is 2%, lower than the Iowa rate of 3%.
- **Access:** Access to exercise opportunities is 73% (10% decrease from 2019 and at the Iowa rate of 73%) and food insecurity is at 11% (Iowa rate is 6.9%). Mammography screenings is at 56% (Iowa rate is 53%), and in 2021 – 87.9% of children at 2 years of age are up-to-date on complete series of vaccinations, compared to the 73.3% (source: Iowa Department of Public Health).
- **Health Conditions:**
  - The “Frequent Mental Distress” rate for Marion County, Iowa is 11%, with an Iowa rate of 11%. According to the CDC, 10% of Americans over the age of 12, had depression and living at or below the poverty level people were 2.5 times more likely to have depression (source: [Marion- County Health Rankings 2020](#)).
  - Diabetes prevalence is at a rate of 11% (higher than Iowa's rate of 10.0%).
  - All Cardiovascular Disease rate for ages 65+ were 60.7 hospitalizations per 1000 Medicare Beneficiaries (Iowa best county is 48.9/1000 Beneficiaries in the 2019 data). (source: <https://nccd.cdc.gov/DHDSPAtlas/detailedpdfreport.aspx?arealds=19125,19181,19181&title=&themeld=30&filterlds=1,5,3,6,7&filterOptions=1,1,1,1&additionalThemes=undefined>)
  - Adult Obesity rates are at the Iowa rate of 36.5%, which is 3.5% higher than the 2019 rates.
  - Adult smoking is 17%, same as the Iowa rate, and an increase of 3% since the 2019 report.

- Physical inactivity rate is 25%, a increase of 1% since 2019, however 1% lower than Iowa's rate. The Access to exercise opportunities is at 73%, with the Iowa rate of 73% which is a 10% decrease from 2019.
- The percent of alcohol impaired driving deaths in Marion County, Iowa is 56%, almost double of the Iowa percentage of 27%. Excessive drinking percentages were also below the Iowa rate, at 23% and 25% respectively.

## METHODOLOGY

### Scope and Purpose

The Federal Patient Protection and Affordable Care Act requires that each registered 501(c)3 hospital conduct a Community Health Needs Assessment (CHNA) at least one every three years, share the assessment results with the community, and adopt a strategy to meet the health needs of the community.

The IRS Notice 2011-52 can be found at the following link and were followed for the purposes of this process, assessment, and report. <https://www.irs.gov/charities-non-profits/community-health-needs-assessment-for-charitable-hospital-organizations-section-501r3>

### Assessing Community Health Needs

To assess the needs of the community the hospital must identify the significant health needs, prioritize those health needs, and identify resources potentially available to address them. Health needs of a community include improvement or maintenance of health status across the community, parts, neighborhoods or population with health disparities. These needs can include financial, access, illness prevention, nutrition or social, behavioral, environmental factors that influence health. Resources can include organization, facilities, and programs within the community.

### Process to Complete a CHNA

The recommended requirements for the CHNA include the method of discovery, qualify community needs, quantify needs, and complete data analysis and comprehensive needs assessment. Federal regulations state that the following process must be completed in order to complete a Community Health Needs Assessment (CHNA).

1. Define the community it serves (discovery)
2. Assess the health needs of that community (qualify community needs)
3. Solicit and take into account input from persons who represent board interest of the community, including those with special knowledge or expertise in public health (quantify needs)
4. Document the CHNA written report that is adopted for or by the hospital facility (complete analysis and comprehensive needs assessment)
5. Make the CHNA report widely available to the public.

### Steps to Complete the CHNA

The following is the process steps with milestones was completed during the community health needs assessment development. This process and milestones follow closely with the recommendations from the American Hospital Association and are a detailed list of actions taken in the above process per the IRS requirements (Source: [http://www.healthycommunities.org/Education/toolkit/index.shtml#.XC\\_37lxKg2x](http://www.healthycommunities.org/Education/toolkit/index.shtml#.XC_37lxKg2x) ).



### Steps in Process for CHNA including Timelines / Milestones

1. **Agreement**— discuss critical success factors for CHNA process (completed 11/30/21)
2. **Meeting with community leadership** – planning, methodology, and agreement of scope and services (Completed 2/1/2022)
3. **Identify and engagement of key stakeholders** – define the community and methodology (12/2021 to 1/31/2022)
4. **Create and process evaluation (survey/ assessment) methods** – work with organization to develop survey that reflects the community, needs, and priorities (12/2021 to 2/2022)
5. **Collect and analyze the data** – including community health issues of past and future (2/2022 to 5/31/2022)
6. **Document and communicate priorities** – work with organization to define the priorities and engagement of key stakeholders including a Town Hall meeting(s) (6/3/2022)
7. **Plan improvement strategies** – work with organization for final report and distribution as needed (6/6/2022 to 7/31/22)
8. **Organization to implement improvement plans** – work with key stakeholders in community for best practice implementation and success (7/1/2022 and ongoing)
9. **Evaluate progress on the key priorities and strategic alignment** – reevaluate progress and continual planning for future needs (FY2022 to FY2023)

### Model for Needs Assessment Process and Steps

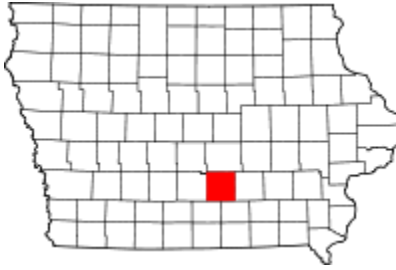
CLOSELY ALIGNED TO ABOVE STAGES OF THE PROCESS



Reference: Association for Community Health Improvement – American Hospital Association

## Community Served / Profile Description

### Marion County, Iowa Community Map



### Portion of Marion County, Iowa for Needs Assessment - Specifics

It was determined by the leadership of Knoxville Hospital and Clinics and the Marion County Public Health Department, that the Marion County Community Health Needs Assessment will include those individuals that live or receive health services in Marion County, Iowa AND live in the communities of Knoxville, Pleasantville, and Melcher-Dallas. This population will not include those that are served by Pella Regional Health Center. This would be the overall (total) population for this process is 10,464 (2020 Census data). A statistically significant sample size was achieved during the survey phase of the process and did represent both demographic, social/economic, religious, and age differences. Efforts were made to ensure that there was a broad interest represented in each of the data collection and prioritization phases.

The population of Marion County, Iowa is 33,380 residents as of 2021. The county is considered 49% rural, covering approximately 571 square miles. The population density is approximately 60.3 people per square mile (Iowa is 57.1 residents per square mile). (Source: <https://www.census.gov/quickfacts/marioncountyiowa>)

The county population consists of 18.6% at or over the ages of 65 years, a increase of 1.0% since 2019 and the state average is 17.7%. In the under 18 age group, Marion County, Iowa has a population of 23.4%, a decrease of 0.3% since 2019 and state average is 23.1%.

The communities within Marion County, Iowa are Pella, Knoxville, Pleasantville, Melcher-Dallas, Bussey, Harvey, Hamilton, Swan, Marysville and un-incorporated Attica, Cloud, Columbia, Flagler, Otley, Pershing, and Tracy. Major highways include Iowa Highways 5, 14, 92, 163, and 316. (source: [https://en.wikipedia.org/wiki/Marion\\_County,\\_Iowa](https://en.wikipedia.org/wiki/Marion_County,_Iowa)). Major types of employment in Marion County, Iowa are education, health and social services (35.2%), manufacturing (27.7%), agriculture (16.1%), Professional, management, administrative (governmental) (10.5%), and other services (4%) (source: [http://www.city-data.com/county/Marion\\_County-IA.html](http://www.city-data.com/county/Marion_County-IA.html)).

### Detailed Demographics – Marion County, Iowa

Source: www.city-data.com					Marion County Iowa										
Zip	Name	County	Pop (2019) est	Pop (2010)	Chg	Family HH	HH Avg Size	Avg AGI	Med Age	Female	Male	White	Black	Amer In	Hisp
50138	Knoxville	Marion	12,070	11,720	3%	42%	2.30	\$ 49,920	43.50	6,256	5,814	11,254	107	18	194
50225	Pleasantville	Marion	2,806	2,940	-5%	50%	2.40	\$ 54,101	42.40	1,263	1,543	2,853	6	5	39
50062	Melcher-Dallas	Marion	700	741	-4%	53%	2.50	\$ 46,648	34.90	352	347	707	1	-	26
	Iowa					46%	2.40	\$ 58,860	38.50						

## Collaborating CHNA Parties

Collaborating with several different agencies in, around, and those that serve Marion County, Iowa, the CHNA was completed. The following is a summary of key stakeholders in the CHNA process. A detailed list of individuals or organizations who have played at least one key role in the assessment are listed in Community Health Partners and Resources section of this report.

### Knoxville Hospital and Clinics Profile

Address: 1002 S. Lincoln Street, Knoxville, Iowa 50138

CEO: Kevin Kincaid, FACHE, MHA

**Mission:** Faithfully providing exceptional healthcare.

**Vision:** Your healthcare destination, built upon compassion and innovation.

**About:** For more than 80 years, Knoxville Hospital & Clinics (KHC) has been helping families throughout south central Iowa and beyond. Our mission of faithfully providing exceptional healthcare, affects every decision we make, and how we care for patients and families. KHC is an independent, not-for-profit healthcare organization and critical access hospital affiliated with MercyOne. We rank among the best hospitals in the United States, receiving quality scores better than 99% of the 2,760 health organizations ranked nationally. [2018 PressGaney] KHC is a regional leader in specialties such as total knee replacement, cancer treatment, diabetes care, treatment of sleep disorders, and more. Newly renovated and voted Best Place to Work, KHC offers a broad range of services and access to highly skilled medical staff and visiting specialists. (source:) <https://knoxvillehospital.org/>

**History of Knoxville Hospital and Clinics:** History about Knoxville Hospital and Clinics can be found at <https://knoxvillehospital.org/community/history/>

**Network Affiliation:** Knoxville Hospital and Clinics is in a management affiliation with MercyOne network. To find out more details about the MercyOne network affiliation please go to <https://knoxvillehospital.org/about/who-we-are/>

**Services:** Knoxville Hospital and Clinics offers a variety of inpatient (acute/skilled) and outpatient services to the county and surrounding areas. A comprehensive list of services can be found at <https://knoxvillehospital.org/services/>. The following is a list of services provided, but not limited to at Knoxville Hospital and Clinics

Acute Care  
Allergy Services  
Anticoagulation Program  
Cancer Program  
Cardiac Rehabilitation Program  
Cardiac Stress Lab  
Cardiology  
Chronic Care Management  
Dermatology  
Diabetes Center & Support Group  
Ears, Nose & Throat (Otolaryngology)

Educators' Portal (school employees only)  
Electromyography and Electrodiagnostic Testing  
Emergency Medical Services  
Family Medicine  
Foot and Ankle Surgery (Podiatric Surgery)  
General Surgery  
Health Coach  
Hematology (see Cancer Program)  
Imaging Services  
Infection Prevention  
Infusion Center

Inpatient Hospital Care  
Inpatient Hospice Care  
Echocardiology  
Laboratory  
Medicare Wellness Program  
Medically Oriented Gym Program  
Nuclear Medicine  
Nutrition Services and Cafe  
Obstetrics & Gynecology  
Occupational Health  
Occupational Therapy  
Oncology (see Cancer Program)  
Ophthalmology-Cataract Surgery  
Orthopaedics/Orthopaedic Surgery  
Total Knee Replacement  
Physical Therapy

Plastic Surgery  
Podiatry (see Foot and Ankle Surgery)  
Preventive Care (low or no-cost care)  
Pulmonary Rehabilitation Program  
Respiratory Therapy  
Rheumatology  
Skilled Nursing and Short-term Rehabilitation  
Sleep Disorders Program  
Speech-Language Therapy  
Sports Medicine Program  
Transitional Care Management  
Vascular Services  
Wound Care Program  
Women's Health

## Marion County Public Health Department Profile

Address: 003 N. Lincoln, Box 152, Knoxville, IA 50138

Director: Kim Dorn, MBL

**Mission:** Marion County Public Health Department Prevents Disease through Health Promotion and Protection using Assessment, Policy Development and Assurance.

**Vision:** Provide health guidance and enforcement for our citizens to have the opportunity to make informed choices regarding their health and wellness, strive for a clean and safe environment, and the assistance to access needed health related services.

**About:** More information about Marion County Public Health Department at <http://www.marionph.org/about/mission.html>

**Services:** Marion County Public Health is a partnering organization with Knoxville Hospital and Clinics. More information can be found at: <http://www.marionph.org/>. Services cover the entire county and are listed below, but not limited to the following:

Breast Cancer Screenings  
Blood Pressure clinics  
Blood draws & specimen collection  
Child Care Nurse Consultant  
Children Insurance program  
Community Care Coordination  
Emergency Response/Preparedness  
Environmental Health  
First Five Healthy Mental Development  
Homemaker services  
Dressing Changes  
Homemaker services

Immunization Clinics and Child Immunization  
Injections  
Lead prevention programs  
Material, Adolescent and Child health  
Medication Management  
Oral health programs  
Parents as Teachers program  
Patient Education  
Referral to community services  
Skilled Nursing visit by RN  
Tobacco programs  
WIC

## **Pavelka's Point Consulting, LLC – External Consulting Services**

Address: 5832 West Mt Vernon Road, Cedar Falls, Iowa 50613

CEO: Sarah Pavelka, PhD, MHA, OTR/L, CPHQ, FNAHQ

**Bibliography:** Sarah Pavelka, PhD, MHA, OTR/L, CPHQ, FNAHQ has over 20 years of experience leading and coaching in organizational performance and continuous improvement in business, industry, education, and healthcare. Sarah, is the CEO/owner of Pavelka's Point Consulting, LLC; an Improvement Faculty for the Iowa Healthcare Collaborative; and an adjunct faculty member for the Healthcare Administration program at Upper Iowa University.

Dr. Pavelka has professional and academic experiences as a 13-year faculty member for the Masters in Healthcare Administration program at Des Moines University. Her previous professional experiences include the Quality Management Director at the Iowa Foundation for Medical Care, Director of Business and Industry Relations for Pella Regional Health Center, and clinical experience as the Director of the Occupational Therapy department for Pella Regional Health Center in Pella, Iowa.

Dr. Pavelka's extensive volunteer experiences included being a six-time National Baldrige examiner, as well as, a seven-year state examiner for the Iowa Recognition for Performance Excellence. She was also the Director-at-Large for the National Association for Healthcare Quality Board from 2014 to 2016. Sarah was also the Past-president of the Iowa Association for Healthcare Quality Board; a task force member for the Iowa Hospital Association; and a member of the Des Moines University Alumni Board.

Sarah holds degrees in Biology and Psychology from Luther College; an Occupational Therapy degree from Concordia University-Wisconsin; MHA from Des Moines University, and a Ph.D. from Walden University. She is a Fellow for the National Association for Healthcare Quality (FNAHQ); a Certified Professional in Healthcare Quality (CPHQ); and has credentials in Occupational Therapy, Ergonomics, Lean, and Six Sigma Black Belt.

## **Community Health Needs Assessment Process**

The following sections represent the process of the Community Health Needs Assessment completed with Marion County Community Leadership and Key Stakeholders. These process steps include creating purpose, defining scope and community, engagement of key leadership, survey assessment, analysis, prioritization, reporting of outcomes, and action planning.

The IRS requirements for a CHNA are a four-phase the process was represented earlier in the document (see Methodology – Scope and Purpose), and further explored in the following sections.

### **Agreement/Contracting/Community Leadership (CHNA Steps 1 – 3)**

On, November 4, 2021 leadership from Knoxville Hospital and Clinics, Marion County Public Health, and Pavelka's Point Consulting, LLC met and discussed contracting arrangements, critical success factors, CHNA process, timelines, and who would be key stake holders. Shortly following this initial contracting meeting, these parties met on February 14, 2022 for planning for the IRS compliant CHNA, further methodology, distribution, survey needs, agreement and scope of services. Key

leadership and stakeholders were also discussed and a list of involvement was compiled in meeting minutes. It was elected at these meetings to move forward with the CHNA process and initial survey distribution would happen at the following May 2022 and survey conclusion on or about June 20, 2022.

#### **Create the assessment, survey, and evaluation process (CHNA Steps 4)**

Starting on November, a community health needs assessment survey was designed and created. The leadership from Knoxville Hospital and Clinics and Public Health were allowed to review the survey as it was developed. The survey questions included similar or prior questions to the 2012, 2015 and 2019 survey for comparison purposes (updates to language and current patient centered care standards were completed in questions as needed). New questions also address the actions or priorities from 2019 to 2022 completed in the communities but Knoxville Hospital and Clinics and Public Health, along with the partnering community entities. Questions related to Social Determinates of Health were also added as recommended by best practice. More information can be provided on Social Determinates of Health at Healthy People 2020 <https://www.healthypeople.gov/2020/topics-objectives/topic/social-determinants-of-health> or Health Leads (source of survey questions) at <https://healthleadsusa.org/>.

#### **Collect the Data (CHNA Steps 5)**

Collection of survey data comprised of many forms and methods. Survey links, fliers, and paper copies were sent to local businesses and employers. Surveys were left at the Knoxville Hospital and Clinics and Public Health Departments for residents of the communities and either electronic or paper (hard) copies were allowed to be submitted. Leadership for the process also attended several community events, school events, and religious gatherings to encourage participation in the survey process. Electronic links were sent multiple times in the local newspapers, provided through the Hospital website, and patients were encouraged to complete the survey before or after healthcare services. During the process, the leadership provided translation services (i.e. vision or language), electronic and paper copies, and a brief description of purpose to those who were taking the survey. No material or monetary incentives were provided when taking the survey.

#### **COMMUNITY NOTIFICATION**

The following were documents released to the community and distributed for the general awareness of the survey being conducted.

**Knoxville Hospital & Clinics**  
May 4 · 🌐

KHC is once again conducting a comprehensive Community Health Needs Assessment (CHNA). Your feedback and suggestions are very important to us. This information will be used to help us complete our implementation plan and guide our community in addressing current and future health care needs. We are asking that you take time to complete a confidential online survey: <https://bit.ly/3yhSbgT>. The deadline to complete the survey is May 20.

### HEALTHCARE PERCEPTIONS & SATISFACTION for KNOXVILLE HOSPITAL & CLINICS and MARION COUNTY, IOWA

The leadership of Knoxville Hospital and Clinics and Marion County Public Health invite you to help improve the care and services of our community. Please help by answering these few short questions. Please answer honestly and your responses will be kept confidential.

\* Required

In general, how would you rate the overall quality of the healthcare delivered \* to your community?

Very Good    Good    Fair    Poor    Very Poor

Overall quality of care    ☐    ☐    ☐    ☐    ☐

DOCS.GOOGLE.COM

**HEALTHCARE PERCEPTIONS & SATISFACTION for KNOXVILLE HOSPITAL & CLINICS and MARION COUNTY, IOWA**

#### EMPLOYEE AND COMMUNITY COMMUNICATIONS

Knoxville Hospital & Clinics posted information about the survey on social media, and the Knoxville Chamber of Commerce shared a post on its social media. KHC staff were invited via email to participate in the survey, and community partners were invited to the town hall via email.



**Knoxville, IA Chamber of Commerce**

May 19 · Knoxville · 🌐



Knoxville Hospital & Clinics is conducting a comprehensive Community Health Needs Assessment (CHNA).

KHC is collecting the community's views regarding health care delivery for the area. This information will then be used to guide the community in addressing current and future health care needs. Please take a few moments to share your feedback by completing this survey.

#IChooseKnoxville

<https://docs.google.com/.../1FAIpQLSdSG5gMtNztJw.../viewform> — at Knoxville Hospital & Clinics.

## HEALTHCARE PERCEPTIONS & SATISFACTION for KNOXVILLE HOSPITAL & CLINICS and MARION COUNTY, IOWA

The leadership of Knoxville Hospital and Clinics and Marion County Public Health invite you to help improve the care and services of our community. Please help by answering these few short questions. Please answer honestly and your responses will be kept confidential.

\* Required

In general, how would you rate the overall quality of the healthcare delivered \* to your community?

Very Good      Good      Fair      Poor      Very Poor

Overall  
quality of  
care



DOCS.GOOGLE.COM

**HEALTHCARE PERCEPTIONS & SATISFACTION for KNOXVILLE HOSPITAL & CLINICS and MARION COUNTY, IOWA**



## CHNA



Maggie Hamilton-Beyer  
To: KHC Staff



5/3/2022

Good afternoon,

KHC is once again conducting a comprehensive Community Health Needs Assessment (CHNA).

We are reaching out and collecting the community's views regarding health care delivery for our service area. This information will then be used to guide our community in addressing current and future health care needs.

Your feedback and suggestions are very important in order to complete our community health needs assessment and implementation plan. We are asking that you take time to complete a confidential online survey. If you prefer a paper survey, please see Megan Sutter in Administration.

Please click the following link to complete:

[HEALTHCARE PERCEPTIONS & SATISFACTION for KNOXVILLE HOSPITAL & CLINICS and MARION COUNTY, IOWA \(google.com\)](#)

The deadline to complete the survey is May 20, 2022

Maggie Hamilton-Beyer, BSBA, MBA

## Community Health Needs Assessment



Community Relations  
To



5/16/2022

Hello,

Every three years Knoxville Hospital & Clinics (KHC) is required to conduct a Community Health Needs Assessment. The information gathered will be used to identify some strategic priorities for KHC to address the health needs of Marion County residents.

We are reaching out and collecting the community's views regarding health care delivery for our service area and are hoping you will take a few minutes and fill out a survey for us. Your feedback and suggestions are very important in order to complete our community health needs assessment and implementation plan. Please click the following link to complete: [HEALTHCARE PERCEPTIONS & SATISFACTION for KNOXVILLE HOSPITAL & CLINICS and MARION COUNTY, IOWA \(google.com\)](#). The deadline to complete the survey is Friday, May 20.

If you have questions, please contact Megan Sutter at (641) 842-1402.

Thank you for choosing KHC for your health care needs. We are proud to be your neighbors... you health care provider... your community partner.

Sincerely,

Knoxville Hospital & Clinics Administration

### Analyze the Data (CHNA Steps 5 continued)

During and following the community survey process, data from external sources (secondary data) were being collected and analyzed. This included data from sources such as Robert Wood Johnson County Health Rankings, City Data, Iowa Hospital Association (IPOP data), Vital Statistics, etc. Survey data was considered primary data research and collected public health needs, perceptions, satisfaction with care and services for both public, private, and governmental agencies serving the Marion County, Iowa area. This data can be found in the following charts in Data Details section with

both the Iowa Hospital Association data (secondary), CHNA Survey Data (detailed primary) and Town Hall meeting outcomes (primary).

Both the external, secondary data, and the initial analysis of the survey outcomes (primary data) was analyzed and presented in the June 2022 town Hall meetings. Top initial results were presented for the key stakeholders to continue to analyze, prioritize, and support with realistic objectives for Marion County, Iowa.

## **Town Hall Research Process (Engage & Prioritize with Stakeholders)**

### **Document and Define Priorities (CHNA Steps 6)**

Community leadership should always be involved with the determination and prioritization of key actions within a community. Members will not only buy-in to the mission of the actions at a higher support level, they will often provide key resources that are needed for such action; which are vital to the actions success and often cannot happen with only hospital supporting resources. Town halls are a focus group type setting where community members can provide insight, consensus, and assist with prioritization of health issues. These sessions gathered input from key stakeholders, start priorities, and encourage on-going dialog between entities.

Entities invited to the Town Hall meeting included local hospital, public health, mental health providers, service providers, employers, local residents, faith-based leadership, school leadership, business leaders, local government officials, and those that receive care (including persons with chronic conditions, un-insured, low-income, and minority groups).

Key community stakeholder groups were invited to the June 3, 2022 Town Hall meeting on May 19, 2022. The Town Hall meeting was held June 3, 2022 from 11:30 am to 1:00 pm. At the Town Hall meeting, a short informational presentation was given, facilitation of priorities from the survey and health ranking information was completed, and key findings were determined out of one 90-minute meeting.

### **TOWN HALL GENERAL PUBLIC INVITE (LETTER)**

Public notice sent was available on the hospital websites, and local posting for attendance at the Town Hall meeting. All community members were invited to attend and snacks were provided.

<https://knoxvillehospital.org/events-details/community-health-needs-assessment-town-hall-meeting/>

## Community Health Needs Assessment Town Hall

Community Relations  
To
[↩ Reply](#)
[↩ Reply All](#)
[→ Forward](#)
[📎](#)
[⋮](#)

Thu 5/19/2022 10:27 AM

The Knoxville Hospital & Clinics and Marion County Public Health Department are currently conducting research for the 2022 Community Health Needs Assessment (CHNA). This research will be used to develop an action plan for Marion County to address the area's significant health needs and priorities.

We need to hear community voices to help understand Marion County's health-related challenges and wish to personally extend an invitation to you to attend the upcoming CHNA Town Hall on June 3.

Please join us at the CHNA Town Hall to learn more about the health needs assessment and to share your thoughts about the health of the residents in our county.

Where do gaps exist between individuals seeking care and availability of specific services in our county? Who is under-served? What high risk health conditions are more prevalent in Marion County? How can communities come together to tackle population health priorities and reduce inequalities?

These are just some of the important questions to be addressed as part of the CHNA.

**Date:** Friday, June 3

**Time:** 11:30 a.m. to 1 p.m.

**Where:** Learning Center - Knoxville Hospital & Clinics, 1002 South Lincoln, Knoxville

Lunch will be served.

Please RSVP by Tuesday, May 31, to Megan Sutter at **(641) 842-1402**.

If you are not able to meet in person and wish to join us via Zoom, here is the link and meeting ID:

<https://us02web.zoom.us/j/2910202520>

**Meeting ID:** 291 020 2520

Thank you,

Knoxville Hospital & Clinics and Marion County Public Health Department

## TOWN HALL AGENDA

The following Agenda and Power Point were completed at the June 3, 2022 Town Hall meeting. At the end of the meeting, it was determined to have an initial list of community priorities from the analysis of primary and secondary research data. These initial priorities list will be further discussed with a steering committee of community leadership and represent community-based organizations which can address the health concerns. This group, considering the priority and input from the Town Hall meeting will strategies and formulate final action plans for Marion County, Iowa health needs.

Community Health Needs Assessment

## Community Health Needs Assessment

### Marion County, Iowa

### Town Hall Discussion

DATE/TIME: June 3, 2022 (11:30 a.m. to 1:00 p.m.)

LOCATION: Cobblestone Hotel & Suites (1212 Eric Drive, Knoxville,  
IA 50138) HOSTS: Knoxville Hospital & Clinics and Marion County  
Public Health

#### Agenda

1. Welcome and Introductions
2. Review the assessment/ survey process and purpose
3. Review past priorities and action items for Marion County
4. Provide summary of current assessment results
5. Gain perspective from community participants for 2022-2024
6. Next steps and conclusion

#### TOWN HALL POWER POINT PRESENTATION

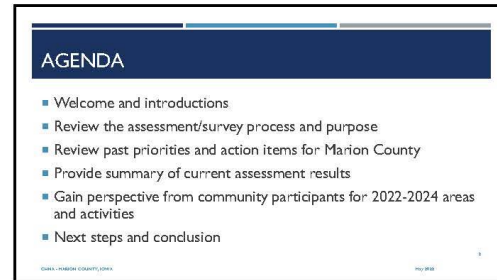
The following power point presentation (please see image below for complete slide deck) was presented to key community stakeholder groups at the June 3, 2022 Town Hall meeting.

## Marion County Community Health Needs Assessment

6/28/2022



1



2

IMPROVEMENTS - 2019 TO 2021  
(NOTE: % MAY NOT ADD UP TO 100% - ALMOST ALL QUESTIONS WERE OPTIONAL)

Priority Area	Not a Problem	Somewhat of a Problem	Still a Problem
Care coordination and expanding rural care	26%	51%	14%
Mental health services at hospital	6%	22%	65%
Mental health services in community	3%	22%	69%
Fight obesity	6%	58%	31%
Access to visiting specialist	45%	39%	10%
Transportation for services	20%	46%	26%
Illegal drug and alcohol use	2%	32%	61%
Opioid / narcotic use	2%	34%	56%
Suicide prevention and support	5%	37%	53%

3

IMPROVEMENTS (2022)

- Hospital coordination of care (clinical care ranked 4<sup>th</sup> in state)
- Access to visiting specialists continues to improve
- Health Behaviors improving (2019 rank 27<sup>th</sup> in state to 2022 rank 14<sup>th</sup>)
- Underinsured population declining
- Access to primary care and mental health providers improving
- Preventable hospital stays continues to decline
- Mammogram screenings increasing
- Flu vaccination rate increasing

4

STATE HEALTH RANKINGS - 2022 (CONT.)  
(SOURCE: COUNTY HEALTH RANKINGS, WWW.COUNTYHEALTHRANKINGS.ORG)

Health Outcome	Marion County	Iowa	U.S.
Health Outcomes	22		
Length of Life	29		
Access to care	600	5,000-7,000	5,000
Quality of Life	18		
Access to care	13%	11-18%	10%
Access to care	3.1	3.0-3.4	3.4
Access to care	4.0	3.7-4.3	4.0
Access to care	4%	5-7%	4%

5

STATE HEALTH RANKINGS - 2022 (CONT.)  
(SOURCE: COUNTY HEALTH RANKINGS, WWW.COUNTYHEALTHRANKINGS.ORG)

Health Outcome	Marion County	Iowa	U.S.
Health Outcomes	11		
Health Behaviors	14		
Access to care	17%	14-20%	15%
Access to care	15%	10-15%	14%
Access to care	8.7	8.4	8.4
Access to care	27%	20-28%	23%
Access to care	77%	70%	77%
Access to care	27%	20-27%	18%
Access to care	50%	40-60%	40%
Access to care	30.8	30.8	30.8
Access to care	12	9-14	11

6

1

## Marion County Community Health Needs Assessment

6/28/2022

**STATE HEALTH RANKINGS - 2022 (CONT.)**  
(SOURCE: COUNTY HEALTH RANKINGS, WWW.COUNTYHEALTHRANKINGS.ORG)

	Marion County	Trend '20	Error Margins	Top U.S. Performers	Score	Rank (of 99) '20
<b>Overall Cms</b>						<b>4</b>
<a href="#">Uninsured</a>	4%		3.3%	6%	4%	
<a href="#">Emergency department</a>	1,020			1,000	1,350	
<a href="#">Deaths</a>	1,900			1,750	1,400	
<a href="#">Hosp. length of stay (LOS)</a>	29%			25%	50%	
<a href="#">Freestanding hospital care</a>	3,800			3,700	3,100	
<a href="#">Discharge to community</a>	36%			35%	33%	
<a href="#">Readmission</a>	28%			15%	54%	

7

**PERCEPTIONS OF HEALTH - 2022**

Needs Attention in the Communities	Percentage Selected
Mental illness	86.2%
Drugs/illegal substances	67.4%
Suicide	66.7%
Teen Health (drinking, abuse, safety, pregnancy)	59.4%
Obesity	53.6%
Abuse and violence	50.7%
Alcohol	47.1%
Nutrition	42.0%
Aging/Dementia	39.1%
Poverty	38.4%
Uninsured/Underinsured	37.0%

8

**PERCEPTIONS OF SERVICES - 2022**

Areas - Needs Improvements	Percentage Selected
Mental Health Counseling	89.0%
Public transportation	41.2%
After hours pharmacy services	35.3%
Elder assistance programs	33.8%
Public awareness of services	33.1%
Access to Urgent Care	30.1%
Chronic Disease Prevention	30.1%
Obstetrics (family planning and pregnancy services)	29.4%
Family assistance programs	25.7%
Wellness Options	24.3%
Healthy eating options	22.8%

9

**SOCIAL DETERMINATES OF HEALTH - 2022**

- Food shortage (no=93.2%)
- Utility shut off (billing) (no=97.8%)
- Loss of housing (within 2 months) (no=98.5%)
- Child care access (prevents working or school) (no=93.5%)
- Need healthcare, but avoid because of cost (no=89.7%)
- Lack of transportation (to key appointments/work) (no=97.8%)
- Reading ability (health materials or other) (no=98.5%)
- Safety at home (no=99.2%)
- Miss/lost work because of transportation (no=98.5%)

10

**PRIORITIES AND ACTIONS**

- Review current results and questions
- Define the current strengths for Marion County
  - What does it take to sustain these strengths?
- Determine top priorities and improvement areas
  - What needs to be improved or changed?
- Suggestions for actions

11

*Thank you*



SARAH PAVELKA, PHD, MHA, OTR/L, CPHQ, FNAHQ  
PAVELKA'S POINT CONSULTING, LLC  
641-780-0810  
PAVELKASPT@GMAIL.COM

12

## TOWN HALL ATTENDING KEY STAKEHOLDERS (ENGAGEMENT AND PRIORITIZATION)

The following is a list of community members (identified key stakeholders and interested community members) that were able to participate in the Town Hall meeting. In all there were 20 attendees at the June 3, 2022 meeting.

Marion County CHNA Town Hall Meeting - June 3, 2022		
Name	Organization	Email Address
Grace Neer	Low Rent Housing	<a href="mailto:gneer@windstream.net">gneer@windstream.net</a>
Jennie Koenig	Pleasantville Youth Initiative	<a href="mailto:jennilkoenig@gmail.com">jennilkoenig@gmail.com</a>
Emily Cualkins	Pleasantville Youth Initiative	<a href="mailto:caulkins25@gmail.com">caulkins25@gmail.com</a>
Rachel Cecil	Cross	<a href="mailto:rachel.cecil@crossmhds.org">rachel.cecil@crossmhds.org</a>
DeAnna DeJong	Infinity Health	<a href="mailto:deanna.dejong@weareinfinity.org">deanna.dejong@weareinfinity.org</a>
Katie Damon	Marion County Public Health	<a href="mailto:kdamon@marioncountyiowa.gov">kdamon@marioncountyiowa.gov</a>
Kim Dorn	Marion County Public Health	<a href="mailto:Kdorn@marioncountyiowa.gov">Kdorn@marioncountyiowa.gov</a>
Melissa Woodhouse	Marion County Public Health	<a href="mailto:mwoodhouse@marioncountyiowa.gov">mwoodhouse@marioncountyiowa.gov</a>
Lisa Champman	UCS Healthcare	<a href="mailto:lisachampman@ucsdsm.org">lisachampman@ucsdsm.org</a>
Shannon Steward	UCS Healthcare	<a href="mailto:shannonstaurt@ucsdsm.org">shannonstaurt@ucsdsm.org</a>
Kairee Bishop	EFR	<a href="mailto:kbishop@efr.org">kbishop@efr.org</a>
Amy Meyer	Pella Regional	<a href="mailto:ameyer@pellahealth.org">ameyer@pellahealth.org</a>
Michelle Kerschener	West Ridge Specialty Care	<a href="mailto:akerschner@careinitiatives.org">akerschner@careinitiatives.org</a>
Kevin Kincaid	Knoxville Hospital	<a href="mailto:kkincaid@knoxvillehospital.org">kkincaid@knoxvillehospital.org</a>
Maggie Hamilton Beyer	Knoxville Hospital	<a href="mailto:mhamiltonbeyer@knoxvillehospital.org">mhamiltonbeyer@knoxvillehospital.org</a>
Jan Myers	Knoxville Hospital	<a href="mailto:jmyers@knoxvillehospital.org">jmyers@knoxvillehospital.org</a>
Mark Worrall	Knoxville Hospital	<a href="mailto:mworral@knoxvillehospital.org">mworrall@knoxvillehospital.org</a>
Brenda Goodall	Knoxville Hospital	<a href="mailto:bgoodall@knoxvillehospital.org">bgoodall@knoxvillehospital.org</a>
Megan Sutter	Knoxville Hospital	<a href="mailto:msutter@knoxvillehospital.org">msutter@knoxvillehospital.org</a>
Sarah Pavelka	Pavelka Consulting	<a href="mailto:pavelkaspointconsulting@gmail.com">pavelkaspointconsulting@gmail.com</a>

## Town Hall Outcomes

The following were the outcomes from the June 3, 2022 Town Hall meeting. These outcomes can be further explored in the Detailed Data/ Town Hall Meeting Outcomes. The outcomes were formulated from both primary data (survey) and secondary data (including County Health Rankings). The outcomes were compiled from large and small group round-robin brainstorming sections and then outlined into affinity groups. The following four affinity groups were seen in both meeting sessions.

Priorities
1. Mental Health - Access, prevention, education, and partnerships
2. Housing/Homeless - Lack of affordable housing and homelessness
3. Transportation - Urgent need, wheelchair/medical transportation, and public transport
4. Food Insecurity - Access, rising cost, and lack of affordable healthy choices



## Community Strategy Formulation and Action Planning

### Planning for Improvement Strategies (CHNA Steps 7 & 8)

To complete the final steps of the process, Marion County, Iowa (Knoxville Hospital and Clinic and Marion County Public Health) community leadership held meetings starting June 3, 2022. During this step of the Community Health Needs Assessment, Marion County, Iowa community leadership gathered all primary and secondary data, completed a relevance and achievable check, and determined 18 SMART goals (tactics) for their improvement of the community's health. SMART goals are specific, measurable, achievable, relevant, and time-oriented action plans for improvements in the community.

This step also include distribution of the CHNA final report. Starting July 2022, Knoxville Hospital and Clinics and Public Health department will be able to be distributed to the community. This report will be sent electronically to all participating and interested community partners for Marion County Public Health and Knoxville Hospital and Clinics. The report will be provided, along with prior reports, on the Knoxville Hospital and Clinics website (<https://knoxvillehospital.org/>). Paper copies

will be distributed to interested parties as requested to Knoxville Hospital and Clinics.

CHNA Implementation Plan Tactics - Marion County (Knoxville Hospital & Clinics/ Marion County Public Health)						
CHNA Health Needs Tactics - starting 07/1/2022 to 6/30/2025						
	CHNA Health Areas of Need		"Specific Actions" to address community health need or "Reasons Why Hospital Will Not" address need.	LEAD	Partners	Timeframe
1	Mental Health	a	Comprehensive education of the general public of mental health services available in the community such as ACT (Access Center), Infinity Health, EFR, UCS Healthcare.	Cross Region (IDPH)	KHC, MC Public Health, Schools, Police/Sheriff, MHDS Region (Cross), Marion Co Coalition for Suicide Prevention, Pleasantville Youth Initiative, ACT (Assertive Community Treatment) Team, Infinity Health, EFR, UCS Healthcare, Insurance/payors, governmental assistance	2022-2025
Increase the provided and breadth of services for Mental Health needs in the communities.		b	Continue to assess availability for, or, potential partnership for Psych/Mental Health Medical Provider via a clinic or Telehealth.	KHC		2023
		c	Develop a focused program to address the rising mental health needs of youth/teens in the county.	Pleasantville Youth Initiative/Marion Co Coalition for Suicide Prevention		2022-2025
		d	Placement of community service workers to assist police and county sheriff when working with community members in mental health crisis.	Marion Co/Cross, Police/Sheriff		2023
		e	Continued participation in lobbying legislation efforts.	KHC		2022-2025
2	Housing/Homeless	a	Complete tracking data to determine current level of homelessness/unsheltered individuals in each community.	The Well	Rolling Hill Coalition, The Well, Knoxville Low-Income Housing, City of Knoxville	2022-2025
Increase the availability of affordable housing in the community. Develop/Formalize		b	Form task-force of local resources and community representatives to identify barriers to obtaining housing and brainstorm ways to address those barriers.	Knoxville Low-Income Housing		

	countywide impact plan to address homelessness.	c	Increase enrollment in Rolling Hill Region Coordinated Entry through increased community awareness / referrals to The Well-Knoxville	The Well		
		d	Compile a comprehensive list of rental properties available in each community including contact information for property owner/managers	Knoxville Low-Income Housing		
<b>3</b>	<b>Transportation</b>	a	Develop plan for off-hour transportation services including business systems / route (charge?)	MC Public Health	HIRT, Uber, Taxi Services, Families, Churches, 3M, Weiler Group, Walmart, The Well Resource Center	2022-2025
	Make accessible (easy) for individuals to use with reasonable access & affordability.	b	Develop plan for immediate transportation needs including awareness of resources	MC Public Health		
		c	Explore the opportunity for organized volunteer system for transportation in communities	The Well		
		d	Explore potential transportation route for Preschool to daycare	MC Public Health		
<b>4</b>	<b>Food Insecurity</b>	a	Develop plan for affordable grocery/food pantry delivery for elderly/disabled individuals who lack transportation.	MC Public Health HIRT	Knoxville Food Youth Initiative, Pleasantville Youth Initiative, Celebrate Church, Helping Hands, Riverside Church, Pleasantville Food Pantry, Melcher-Dallas Food Pantry, Food Bank of Iowa	2022-2025
	Increase the availability of affordable health food options for members of the community.	b	Use social media/print publications to promote awareness of food resources to increase access and understanding of local/state/national resources including SNAP Food Assistance, WIC, Meals on Wheels, and local food pantries	KHC		
		c	Evaluate current food pantry usage to determine potential benefit of additional locations/hours	Knoxville Food Youth Initiative		
		d	Explore opportunities for food waste reduction through food rescue/redistribution of surplus foods.	Thrive Knoxville		

#### PRIOR ASSESSMENT ACTION PLANS

During the years of 2019 to 2021, Knoxville Hospital and Clinics, Marion County Public Health and Community groups along with key community partners worked on improving nineteen (9) strategic tactics for the improvement of the community's health. For details of the 2019 to 2021 Community Health Needs Assessment tactical (action) planning, please see the detail in the Details Data section of the report. Actions for improvements included but not limited to creation of a community resource guide (posted on the website), coordination of events and care models with community resources, recruitment of primary and specialty providers, and agreement with Senior Life Solutions (providing services for elder in the community).

There were improvements in three (3) of the nine (9) areas. The one (1) access to visiting specialist other areas were significantly improved in their ratings. The improvements did not move the issues to "not a problem"; however, did move the issues to "Somewhat of a Problem" in a majority of the participants taking the survey and during Town Hall prioritization (CHNA steps 5 and 6). In the chart below was provided to the participants at the Town Hall meeting (June 2022) and signifies that

Mental Health/Suicide Services and Substance Use/Abuse still remain a concern for the survey participants.

## IMPROVEMENTS – 2019 TO 2021

(NOTE: % MAY NOT ADD UP TO 100% ALMOST ALL QUESTIONS WERE OPTIONAL)

Priority Area	Not a Problem	Somewhat of a Problem	Still a Problem
Care coordination and expanding rural care	26%	51%	14%
<b>Mental health services at hospital</b>	6%	22%	65%
<b>Mental health services in community</b>	3%	22%	69%
Fight obesity	6%	58%	31%
Access to visiting specialist	45%	39%	10%
Transportation for services	20%	46%	26%
<b>Illegal drug and alcohol use</b>	2%	32%	61%
<b>Opioid / narcotic use</b>	2%	34%	56%
<b>Suicide prevention and support</b>	5%	37%	53%

CHNA- MARION COUNTY, IOWA

May 2022

### Evaluation of Progress on Key Priorities and Strategic Alignment (CHNA Step 9)

Knoxville Hospital and Clinics and Marion County Public Health departments will continually monitor the action plans for changes and adjustments as key findings present within three years. This assessment and findings will be incorporated into future strategic planning efforts and include a systematic cycle of improvement. Improvements will be completed using performance excellence tools, including but not limited to the Plan, Do, Study, Act improvement cycle and will include as many community partners, agencies, and interested individuals as possible for best outcomes and sustainability.

## COMMUNITY HEALTH STATUS

### Primary Research Findings

In January 2022 through June 1, 2022, Knoxville Hospital and Clinics sponsored/conducted primary research (survey) to all area residents residing or receiving services in their primary service area, with 140 individual replies.

## REPLIES BY ZIP

Marion County CHNA 2022 Sample by PSA Zips					
#	Zips	County	Population	Returns (% of Total)	%
1	Knoxville, IA - 50138	MARION	7,472	94 (67.1%)	1.25%
2	Pella, IA- 50219	MARION	10,237	9 (6.4%)	0.10%
3	Pleasantville, IA - 50225	MARION	2,806	10 (7.1%)	0.40%
4	Melcher-Dallas, IA- 50163	MARION	1,244	1 (0.7%)	0.10%
	ZIPs Inside Marion Co		33,414	114 (81.4%)	0.30%
	ZIPs Outside Marion Co		NA	26 (18.5%)	NA
	Totals			140 (100%)	

## OVERALL QUALITY OF SERVICES IN THE COMMUNITY

Community Healthcare Needs Assessment 2022					
In general, how would you rate the overall quality of the healthcare delivered to your community?	Marion Co (2022) N=140	Marion Co (2019) N=271	Marion Co (2016) N=114	Marion Co (2013) N=290	Trend
Top 2 Boxes	92.85%	83.40%	67.50%	84.10%	9.45%
Very Good	60.71%	35.80%	28.00%	34.10%	24.91%
Good	32.14%	47.60%	39.50%	50.00%	-15.46%
Fair	5.00%	14.00%	29.80%	12.60%	-9.00%
Poor	2.10%	1.50%	0.80%	3.30%	0.60%
Very Poor	0.00%	1.10%	1.80%	0.00%	-1.10%
Bottom 2 Boxes	2.10%	2.60%	2.60%	0.00%	-0.50%
Totals	100.00%	100.00%	100.00%	100.00%	

## RATING OF HEALTH SERVICES

Community Healthcare Needs Assessment 2022					
How would you rate the following health services?	Poor / Very Poor %				
	Marion Co (2022) N=140	Marion Co (2019) N=271	Marion Co (2016) N=114	Marion Co (2013) N=290	Trend
Ambulance Service	2.86%	1.50%	1.40%	1.10%	1.36%
Child Care	2.86%	9.60%	8.20%	6.60%	-6.74%
Chiropractor	0.71%	1.50%	6.10%	2.30%	-0.79%
Dentists	2.14%	5.20%	7.20%	4.50%	-3.06%
Emergency Room	5.00%	5.20%	7.70%	7.70%	-0.20%
Eye Doctor / Optometrist	1.43%	1.80%	0.00%	4.70%	-0.37%
Family Planning Services	7.14%	15.50%	15.30%	17.70%	-8.36%
Home Health	2.86%	5.90%	7.40%	4.80%	-3.04%
Hospice	3.57%	2.20%	1.40%	1.90%	1.37%
Hospital Inpatient Services	2.86%	7.00%	4.20%	8.60%	-4.14%
Mental Health Services	37.14%	47.20%	62.30%	45.40%	-10.06%
Nursing Home	7.14%	14.00%	6.00%	16.50%	-6.86%
Outpatient Services (lab, radiology, etc.)	2.86%	2.20%	5.60%	4.80%	0.66%
Pharmacy	0.00%	0.70%	0.00%	2.70%	-0.70%
Primary Care Doctors	2.86%	3.70%	4.20%	5.00%	-0.84%
Public Health Department	3.57%	4.80%	4.50%	8.80%	-1.23%
School Nurse	0.71%	3.70%	1.60%	4.80%	-2.99%
Specialist Physician care	4.29%	7.00%	11.80%	6.80%	-2.71%
Teen Health (drinking, abuse, safety, pregnancy)	17.14%	26.90%	N/A	NA	-9.76%

## CAUSES OF DISEASE OR DISABILITY IN THE COMMUNITY

Community Healthcare Needs Assessment 2022					
In your opinion, how much of a problem are the following causes of diseases or disability in your community?	Major Problem %				
	Marion Co (2022) N=140	Marion Co 2019 PSA N=271	2016 data not available	2013 data not available	Trend
Cancer	34.28%	31.70%	--	51.90%	2.58%
Diabetes	62.85%	56.10%	--	64.30%	6.75%
Substance Abuse	73.50%	71.20%	--	70.90%	2.30%
Heart Disease	31.40%	33.20%	--	55.00%	-1.80%
Sexually Transmitted Diseases	10.70%	9.20%	--	24.10%	1.50%
Mental Disorders	77.14%	76.00%	--	61.50%	1.14%
Obesity	67.14%	64.90%	--	71.40%	2.24%
Pneumonia / Flu	7.14%	11.40%	--	17.60%	-4.26%
Respiratory Disease	14.20%	10.00%	--	24.90%	4.20%
Stroke	7.85%	8.90%	--	19.90%	-1.05%
Suicide	46.40%	68.60%	--	18.80%	-22.20%
Trauma	24.20%	21.40%	--	9.40%	2.80%

## HEALTH NEEDS BY AGE

Community Healthcare Needs Assessment 2022					
How well do you feel our local health care providers are doing in addressing the health needs of the following age groups?	Poor / Very Poor %				
	Marion Co (2022) N=140 (poor/v poor)	Marion Co 2019 PSA N=271 (poor/v poor)	2016 data not available	Marion Co (2013) N=290 (poor/v poor)	Trend
Infants	4.28%	4.80%		4.10%	-0.52%
Age 1 - 12	4.28%	4.10%		2.70%	0.18%
Age 13 -17	5.70%	9.20%		2.20%	-3.50%
Age 18 - 44	7.85%	13.30%		3.10%	-5.45%
Age 45 - 64	5.00%	4.40%		3.10%	0.60%
Age 65 - 84	6.40%	6.60%		6.70%	-0.20%
Over 85	6.40%	8.50%		8.20%	-2.10%

## HEALTH SERVICES OUTSIDE OF THE COUNTY

Community Health Needs Assessment 2022					
Over the past 2 years, did you or your household receive health care services outside of your county?	Marion Co (2022) N=140	Marion Co (2019) N=271	Marion Co (2016) N=114	Marion Co (2013) N=290	Trend
Yes	58.60%	59.80%	81.30%	62.90%	-1.20%
No	41.40%	40.20%	16.30%	37.10%	1.20%
Totals	100%	100%	97.60%	100%	
Please list the health care services you or your household member(s) have received outside of your county:	# of Replies (2022)	# of Replies (2019)	2016 data not available	2013 data not available	
Orthopedic	6	18	--	--	-12
Mental Health	7	14	--	--	-7
Women's Health/OBGYN	9	14	--	--	-5
Dental/Dental Specialties	8	14	--	--	-6
Cardiology/Cardiac Surgery	8	10	--	--	-2
Surgery	14	10	--	--	4
Ophthalmology/Optometry	4	10	--	--	-6
Pediatric	9	10	--	--	-1
Specialists	9	8	--	--	1
Gastroenterology	4	8	--	--	-4
Dermatology	3	8	--	--	-5
Diagnostic Imaging	1	8	--	--	-7
If offered, would you have received the services locally?	% of Replies	% of Replies	--		
Yes	29.28%	31.70%	--		
Maybe	20.71%	16.20%	--		
No	8.57%	11.10%	--		
Unanswered	41.42%	41.00%	--		
Total	100.00%	100%	--		

## ADDITIONAL HEALTHCARE PROVIDERS

Community Health Needs Assessment 2022					
Does our community need any additional healthcare providers?	Marion Co (2022) N=140	Marion Co (2019) N=271	2016 data not available	2013 data not available	Trend
Yes (See detail Section V)	36.42%	56.10%	--	--	-19.68%
No	61.42%	40.20%	--	--	21.22%
<i>Totals</i>	<b>98%</b>	<b>96.30%</b>	--	--	
If you feel more providers need to be added, please specify what type is needed:	# of Replies	# of Replies	--	--	
Mental Health/Psychiatry/Counseling	27	84	--	--	
Pediatrics	11	21	--	--	
OBGYN/Women's Health	9	16	--	--	
Specialists	3	8	--	--	
General/Family Practitioner	10	8	--	--	
Dental/Dental Specialties (Medicaid)	2	8	--	--	
Neurology	2	7	--	--	
Substance Abuse Programs	3	6	--	--	
Emergency Medicine/EMS	0	6	--	--	
Diabetes/Nutrition/Dietician/Endocrinology	5	5	--	--	
GI	2	5	--	--	
Pulmonology	0	5	--	--	
Pain	0	4	--	--	
Alternative Medicine	2	3	--	--	
Nephrology	2	3	--	--	
Dermatology	0	3	--	--	
Orthopedics	0	3	--	--	
Optometry	0	2	--	--	
Urology	0	2	--	--	



## IMPROVEMENT OF SERVICES

Community Health Needs Assessment 2022			
Are there health care services in your community or neighborhood that you feel need to be improved and or changed? (Please be specific)			
Rank	Services	# Replies	% of Replies
1	Mental Health Services	25	50.00%
2	Drug/Substance Abuse	8	16.00%
3	Emergency Department	5	10.00%
4	More information of available services	2	4.00%
5	Pediatrics	2	4.00%
6	Diabetes/Food/Nutrition	1	2.00%
6	Preventative Care/Wellness	1	2.00%
6	Dental Care	1	2.00%
6	Transportation	1	2.00%
6	Longer appointment times	1	2.00%
6	More emergency surgery services	1	2.00%
6	Concierge Care	1	2.00%
6	Nursing Homes	1	2.00%
	Total	50	100.00%

## THREE YEAR ACTION PLAN IMPROVEMENTS

Community Health Needs Assessments 2022			
Please rate the following areas for your community.	Not a Problem	Somewhat of a Problem	Still a Problem
Care coordination and expanding rural care	28.91%	56.25%	14.84%
Access to mental health services at the hospital	6.77%	24.06%	69.17%
Access to mental health services in the community	3.76%	23.31%	72.93%
Fight obesity (nutrition education and fitness options)	6.02%	61.65%	32.33%
Access to visiting specialist	47.76%	41.04%	11.19%
Transportation for health services	22.14%	49.62%	28.24%
Illegal drug and alcohol use	1.50%	34.59%	63.91%
Opioid / narcotic use	2.31%	36.92%	60.77%
Suicide prevention and support	5.30%	39.39%	55.30%

## PRESSING ISSUES FOR TODAY'S IMPROVEMENTS

Community Health Needs Assessment 2022				
Which health needs are most pressing TODAY and are in need of improvement?				
Rank	Health Needs	# Replies	% of Total Replies	
1	Mental Health/Counseling	121	18.73%	
2	Public Transportation for healthcare services	56	8.67%	
3	After hours pharmacy services	48	7.43%	
4	Elder assistance programs	46	7.12%	
5	Public awareness of healthcare services	45	6.97%	
6	Access to urgent care services	41	6.35%	
7	Chronic disease prevention (example diabetes or heart failure)	41	6.35%	
8	Obstetrics (family planning and prenatal care) services	40	6.19%	
9	Family assistance programs	35	5.42%	
10	Wellness options (healthy lifestyle, food options, exercise)	33	5.11%	
11	Healthy eating option	31	4.80%	
12	Care transitions (movement from one healthcare setting to another or home)	23	3.56%	
13	Cancer services	22	3.41%	
14	Home health / public health	22	3.41%	
15	Nutritional education	21	3.25%	
16	Children's Health	21	3.25%	
	Total	646		
	Nutrition + Healthy Eating + Wellness (Exercise) Options	85	13.16%	Would be 2nd
	Nutrition Education + Healthy Eating Options	52	8.05%	Would be 3rd
	(Must consider that the same people who voted for one category may have also voted for the other)			

## RATING OF SERVICES FOR COMMUNITY

Community Health Needs Assessment 2022									
How would you rate each of the following in your community?	Very Poor	Poor	Fair	Good	Very Good	Not Aware/Not Applicable	(blank)	Very Poor + Poor	Good + Very Good
Access to services		5.71%	27.14%	37.86%	18.57%	7.14%	2.14%	7.14%	56.43%
Caregiver training programs	1.43%	7.86%	22.14%	20.71%	4.29%	42.86%	0.71%	9.29%	25.00%
Early childhood development programs	1.43%	4.29%	28.57%	28.57%	14.29%	22.14%	0.71%	5.71%	42.86%
Emergency preparedness	0.71%	5.00%	15.71%	42.86%	27.86%	6.43%	1.43%	5.71%	70.71%
Food and nutrition services (WIC programs)	0.71%	3.57%	15.00%	40.00%	20.00%	18.57%	2.14%	4.29%	60.00%
Health screenings	0.00%	2.86%	24.29%	41.43%	21.43%	7.14%	2.86%	2.86%	62.86%
Obesity prevention and treatment	6.43%	14.29%	30.00%	10.00%	4.29%	35.00%	0.00%	20.71%	14.29%
Spiritual health support	2.86%	4.29%	30.00%	30.00%	9.29%	22.86%	0.71%	7.14%	39.29%
Prenatal / child health programs	1.43%	10.71%	21.43%	26.43%	16.43%	20.71%	2.86%	12.14%	42.86%
Prevention of falls	2.14%	2.86%	28.57%	24.29%	7.14%	34.29%	0.71%	5.00%	31.43%
Sexually transmitted disease testing	1.43%	6.43%	29.29%	20.00%	10.71%	29.29%	2.86%	7.86%	30.71%
Drug abuse programs	7.86%	15.00%	34.29%	11.43%	5.00%	25.71%	0.71%	22.86%	16.43%
Reduction of opiate/narcotic use	7.86%	18.57%	32.14%	7.14%	5.71%	27.86%	0.71%	26.43%	12.86%
Tobacco prevention / cessation programs	4.29%	10.71%	30.00%	20.71%	9.29%	22.86%	2.14%	15.00%	30.00%
Alcohol use and treatment programs	8.57%	20.71%	29.29%	7.86%	5.00%	27.14%	1.43%	29.29%	12.86%
Violence prevention	5.00%	16.43%	26.43%	7.86%	3.57%	40.00%	0.71%	21.43%	11.43%
Transportation (bus) services	10.71%	17.86%	24.29%	20.00%	7.86%	19.29%	0.00%	28.57%	27.86%
Women's wellness programs	1.43%	9.29%	23.57%	34.29%	13.57%	15.00%	2.86%	10.71%	47.86%

**Personal Health Needs: Survey Results****PERSONAL HEALTH NEEDS: HEALTH DESCRIPTION**

Community Healthcare Needs Assessment 2022					
In general, how would you best describe your health? (Choose one)	Marion Co (2022) N=140	Marion Co (2019) N=271	2016 data not available	Marion Co (2013)	Trend
Top 2 Boxes	82.60%	86.00%	--	89%	
Very Good	29.71%	25.50%	--	28.00%	
Good	52.89%	60.50%	--	61.00%	
Fair	15.21%	12.50%	--	10.20%	
Poor	2.10%	0.40%	--	0.80%	
Very Poor	0.00%	0.40%	--	0.40%	
Bottom 2 Boxes	2.10%	0.80%	--	1.20%	
Totals	99.91%	99.30%	--	100%	

**PERSONAL HEALTH NEEDS: OVERALL HEALTH – 2 YEAR COMPARISON**

Community Healthcare Needs Assessment 2022					
Compared to a year ago, how would you rate your overall health in general now?	Marion Co (2022) N=140	Marion Co 2019 N=271	2016 data not available	2013 data not available	Trend
Much better than a year ago	18.57%	17.30%	--	--	
About the same	73.50%	77.90%	--	--	
Much Worse than a year ago	7.14%	3.70%	--	--	
Totals	99.21%	98.90%	--	--	

PERSONAL HEALTH NEEDS: SOCIAL DETERMINATES OF HEALTH

Community Health Needs Assessment 2022				
Social Determinates of Health – questions for need:	No %	Yes %	(blank) %	Total %
In the last 12 months, did you ever eat less than you felt you should because there wasn't enough money for food?	90.00%	6.43%	3.57%	100.00%
In the last 12 months, has your utility company shut off your service for not paying your bills?	96.43%	2.14%	1.43%	100.00%
Are you worried that in the next 2 months, you may not have housing?	97.14%	1.43%	1.43%	100.00%
Do problems getting child care make it difficult for you to work or study? (leave blank if you do not have children)	83.57%	5.71%	10.72%	100.00%
In the last 12 months, have you needed to see a doctor, but could not because of cost?	87.86%	10.00%	2.14%	100.00%
In the last 12 months, have you ever had to go without health care because you didn't have a way to get there?	96.43%	2.14%	1.43%	100.00%
Do you ever need help reading hospital materials?	97.14%	1.43%	1.43%	100.00%
Are you afraid you might be hurt in your apartment building or house?	97.86%	0.71%	1.43%	100.00%
Have you every missed work or lost a job due to unreliable transportation?	96.43%	1.43%	2.14%	100.00%
In the last 12 months, have you taken less medicine than prescribed because there was not enough money to buy medication?	91.43%	7.14%	1.43%	100.00%

PERSONAL HEALTH NEEDS: USE OF PRIMARY CARE PROVIDER

Community Healthcare Needs Assessment 2022					
Does your household have a provider you use for Primary Care?	Marion Co (2022) N=140	Marion Co 2019 N=271	2016 data not available	Marion Co (2013) N=290	Trend
Yes (See detail Section V)	90.00%	91.90%		91.00%	
No	8.57%	7.40%		9.00%	
Totals	98.57%	99.30%		100%	

## PERSONAL HEALTH NEEDS: PHYSICAL IN THE LAST 12 MONTHS

Community Healthcare Needs Assessment 2022					
Have you had a physical in the past 12 months?	Marion Co (2022) N=140	Marion Co 2019 N=271	2016 data not available	Marion Co (2013) N=290	Trend
Yes	80.71%	84.50%		75.70%	
No	17.14%	14.80%		24.30%	
Totals	97.85%	99.30%		100.00%	
If you have not had a physical, please provide the specific reason:	# of Replies	# of Replies			
No need/Haven't Thought About It/Feel Healthy	5	14			
No time/Can't schedule/Can't miss work	9	5			
No OBGYN available	4	2			
Insurance problems	-	1			
Turnover in doctors/Provider on Leave	4	1			
Not convenient	1	1			
Covid	1	0			

## PERSONAL HEALTH NEEDS: HEALTH PRACTICES

Community Health Needs Assessment 2022					
Please complete sentence below - "Are you..."	No %	N/A %	Yes %	(blank)	Total %
Eating right (Daily, 5 servings of fruits, vegetables, wheat)	35.00%	0.00%	65.00%	0.00%	100.00%
Using tobacco products weekly	80.72%	10.71%	8.57%	0.00%	100.00%
Exercising 2-3 times weekly	37.86%	1.43%	60.71%	0.00%	100.00%
Consuming alcohol (more than 1 drink daily)	85.00%	5.71%	8.57%	0.72%	100.00%
Receiving an annual flu shot	12.86%	2.14%	85.00%	0.00%	100.00%
Been without a place to stay for multiple nights (homeless)	93.57%	6.43%	0.00%	0.00%	100.00%
Have difficulty with employment due to transportation, education, skills, childcare, scheduling, etc.)	82.86%	12.14%	5.00%	0.00%	100.00%

## Primary Data (Survey) Demographics of Participants

### AGE

What is your age?	# of Replies	% of Total
(blank)	2	1.4%
18 to 25	8	5.7%
26 to 44	59	42.1%
44 to 64	54	38.6%
65 to 84	16	11.4%
85 and over	1	0.7%
Total	140	100.00%

### GENDER

What is your gender?	# of Replies	% of Total
Female	111	79.28%
Male	27	19.28%
Prefer not to say	1	0.72%
(blank)	1	0.72%
Total	140	100.00%

### IDENTITY

How would you identify yourself?	# of Replies	% of Total
Indian/ Native Alaskan	1	0.72%
Multicultural/ Multiracial	3	2.14%
Asian / Pacific Islander	0	0.00%
Caucasian / White	133	95.00%
Latino / Hispanic	1	0.72%
(blank)	2	1.42%
Total	140	100.00%



## HOUSEHOLD

How would you describe your household? (Please select all that apply)	# of Replies	% of Total
Married	79	56.80%
Married; Parent / Guardian with children at home	44	31.70%
Single	23	16.50%
Married with children no longer at home	22	15.80%
Divorced	6	4.30%
Widowed	7	5.00%
(blank)	1	0.70%
Caregiver for my parents	1	0.70%
Significant other	1	0.70%
Roommate	1	0.70%
Single, adult children no longer at home	1	0.70%
Separated	1	0.70%
Total	187	100.00%

## HEALTH CARE FACILITY

What type of healthcare facility do you use when not feeling well or sick?	# of Replies	% of Total
Clinic/Doctor's office	119	85.00%
Urgent-care/Acute Care	9	6.42%
Don't seek care/medical treatment	6	4.30%
Emergency Department	1	0.71%
(blank)	3	2.15%
Clinic/ER	1	0.71%
No illness	1	0.71%
Total	140	100.00%

## MEDICAL INFORMATION

Where do you get most of your medical information?	# of Replies	% of Total
Doctor	203	74.9%
Internet	53	19.6%
Family	5	1.8%
(blank)	4	1.5%
Friend(s)	2	0.7%
Insurance Company	2	0.7%
Social Media	2	0.7%
Total	271	100%

## INSURANCE

What type of health insurance coverage is your primary plan?	# of Replies	% of Total
Partially covered by employer (you and employer share cost)	75	53.57%
Covered by employer (employer pays total cost)	34	24.30%
Private Insurance you purchased	9	6.43%
Medicare	15	10.71%
Medicaid	5	3.57%
No coverage (uninsured)	0	0.00%
(blank)	2	1.42%
<b>Total</b>	<b>140</b>	<b>100.00%</b>

## INVOLVEMENT IN COMMUNITY

Rank	For reporting purposes, are you involved in or are you a... (Please check all that apply)	# of Replies	% of Total
1	Hospital or Clinic employee	76	30.77%
2	Parent / Caregiver	37	14.98%
3	Consumer of healthcare services	25	10.12%
4	Healthcare Provider	20	8.10%
5	Education official / Teacher	18	7.29%
6	Civic club member	11	4.45%
7	College / University student	10	4.05%
7	Farmer/Rancher	10	4.05%
8	Board member (local health organization)	6	2.43%
8	Business/Merchant	6	2.43%
8	Laborer	6	2.43%
9	Health Department	3	1.21%
9	Veteran	3	1.21%
10	Construction / Housing / Builder	2	0.81%
10	Insurance industry	2	0.81%
10	Law Enforcement	2	0.81%
11	Retired	1	0.40%
11	Techers associate	1	0.40%
11	Fire/EMS	1	0.40%
11	Professional Services	1	0.40%
11	Homemaker	1	0.40%
11	Retired	1	0.40%
11	Aquatics Supervisor	1	0.40%
11	Mobile Crisis response team	1	0.40%
11	Golf clubhouse manager	1	0.40%
11	Economic Development	1	0.40%
	Total (multiples could be selected)	247	100.00%

## Secondary Research Findings

### OVERALL STATE HEALTH RANKINGS

#	IA Rank of 99 Counties	Definitions	Marion Co (2022)	Marion Co (2019)	Marion Co (2016)	Marion Co (2013)	TREND
1	Physical Environment	Environmental quality	46	44	36	71	
2	Health Factors	Health Factors	11	8	12	23	
3	Clinical Care	Access to care / Quality of Care	4	4	10	23	
4	Social & Economic Factors	Education, Employment, Income, Family/Social support, Community Safety	12	9	13	20	
5	Health Outcomes		33	20	41	40	
6	Health Behaviors	Tobacco Use, Diet/Exercise, Alcohol Use, Sexual Activity	14	27	20	36	
7	Morbidity	Quality of life	22	24	44	53	
8	Mortality	Length of life	29	25	37	53	
Error! Hyperlink reference not valid.			-				

## DEMOGRAPHIC DETAILS: POPULATION AGE, GENDER, ETHNIC AFFILIATION (1A)

	Population Indicator	Marion Co (2022)	Marion Co (2019)	Marion Co (2014-6)	Marion Co (2011-3)	Trend	State of Iowa
1a	Population, Estimate (2021)	33,380	33, 105	33, 365 (2016)	33,309		3,193,079
1a	Population, 2020	33,309	33,309	33,309			3,190,369
1a	Persons Under 5 years, Percent	5.40%	5.80%	6.10%	6.50%		5.90%
1a	Persons Under 18 years, Percent	23.40%	23.70%	24.10%	24.60%		23.10%
1a	Persons 65 Years and Over, Percent	18.60%	17.60%	16.40%	15.80%		17.70%
1a	Female Persons, Percent	49.60%	50.20%	50.10%	50.50%		49.80%
1a	White Alone, Percent	96.00%	94.60%	96.30%	94.60%		90.10%
1a	Black or African American Alone, Percent	0.90%	0.80%	1.00%	1.00%		4.30%
1a	Hispanic or Latino, Percent	2.30%	2.00%	1.9% (2014)	2.00%		6.70%
1a	Foreign Born Persons, Percent	1.90%	2.50%	2.3% (2016)	2.00%		5.40%
1a	Language Other than English Spoken at Home, Percent, Age 5+	2.90%	0%	2.9% (2013)	NA		8.40%

Source: US Census – Quick Facts

<https://www.census.gov/quickfacts/fact/table/Marioncountyiowa,ia/PST045221>

## DEMOGRAPHIC DETAILS: POPULATION STATUS (1B)

	Population Indicator	Marion Co (2022)	Marion Co (2019)	Marion Co (2016)	Marion Co (2013)	Trend	State of Iowa
1b	Veterans	1,918	1,840	2484 (2009-13)	2,448 (2010)		178,481
1b	Living in Same House 1 Year & Over, Percent	80.30%	83.6% (2014-18)	82.6% (2009-13)	84.3% (2009)		85.60%
1b	Persons per Square Mile	60.30	58.3	60.1 (2010)	60.1 (2009)		57.1
1b	Children in Single-Parent Households, percent (County Health Rankings)	16.00%	27%	20.% (2013)	18% (2010)		21.00%
1b	Poverty Levels, (Iowa Health Fact Book)	8.00%	12%	11. % (2011)	9.1% (2007)		6.40%
1b	Limited Access to Healthy Foods, 2022 (County Health Rankings)	3.00%	6%	5% (2015)	NA		6.00%
1b	People 65+ with Low Access to a Grocery Store, (US Dept of Agriculture- Food Atlas)	8.11%	2.4% (2015)	2.3% (2010)	2.50%		6.80%
1b	Voter Turnout, percent (Iowa Secretary of State 2020)	83.29% (2020)	61.28% (2018)	57.2% (2012)	NA		76.81%

Source: Unless stated source: US Census – Quick Facts

<https://www.census.gov/quickfacts/fact/table/Marioncountyiowa,ia/PST045221>

## ECONOMIC DETAILS (2)

	Economic Indicator	Marion Co (2022)	Marion Co (2018)	Marion Co (2016)	Marion Co (2012)	Trend	State of Iowa
2	Per Capita Money Income in Past 12 Months (2017 dollars)	\$33,571	<b>\$27,815</b>	\$25,477	\$25,062		\$33,021
2	Housing Units in Multi-Unit Structures, Percent	26.30%	<b>13.50%</b>	13.9% (09-13)	12.70%		28.80%
2	Persons per Household	2.33	<b>2.4</b>	2.5 (09-13)	2.5		2.4
2	Severe Housing Problems (County Health Rankings)	11.00%	<b>11.00%</b>	10% (2015)	--		12.00%
2	Retail Sales per Capita (Business Quick Facts)	\$11,656	<b>\$10,887 (2012)</b>	\$10,201 (2007)	--		\$15,925
2	Total Number of Firms (Business Quick Facts)	2,971	<b>2,604</b>	3,524 (2007)	3,254		294,871
2	Unemployment (County Health Rankings)	4.2%	<b>2.70%</b>	4.5% (2015)	6.30%		5.3%
2	Overall Food Insecurity Rate (Feeding America)	10.90% (2019)	<b>10.30%</b>	11.1% (2015)	11.5% (2013)		9.80%
2	Child Food Insecurity Rate (Feeding America)	14.60% (2019)	<b>14.40%</b>	15.8% (2015)	--		15.90%
2	Grocery stores / 1,000 pop (US Department of Agriculture- Food Atlas)	0.24 -2016	<b>0.27 (2014)</b>	0.3 (2012)	0.18 (2009)		0.3
2	Low-Income and Low Access to a Grocery Store, (US Department of Agriculture – Food Atlas)	3.2.%	<b>2.66%</b>	2.97	2.20%		5.67%
2	Mean Travel Time to Work (Minutes), Workers Age 16+	19.3	<b>19</b>	20.3	20.4 (2006)		18
2	Long Commute - Driving Alone (County Health Rankings)	25.00%	<b>24%</b>	27.00% (2009-13)	--		21.00%

Source: Unless stated source: US Census – Quick Facts

<https://www.census.gov/quickfacts/fact/table/Marioncountyiowa,ia/PST045221>

## PUBLIC SCHOOLS HEALTH DELIVERY (3A AND 3B)

Currently school districts are providing on site primary health screenings and basic care.

	Education Indicator	Marion Co (2022)	Marion Co (2019)	Marion Co (2016)	Marion Co (2013)	Trend	State of Iowa
3a	Students Eligible for Free Lunch (%) (US Department of Agriculture – Food Atlas)	NA	21.70%	23.8% (2010)	30.70%		30.00%
3a	4-Year High School Graduation Rates (Quick Facts)	93.90%	96.80%	94.70%	94%		92.5%
3a	Bachelor's Degree or Higher, Percent of Persons Age 25+, (Quick Facts)	30.80%	26.10%	25%	23.50%		29.30%

## School Health – Vaccination Rates for 2017-2018 School Year

School Name	Certificate of Immunization	Total Enrollment	Percent Vaccinated with Vaccines Required by Law*
Knoxville School System	1604	1675	95.76%
Melcher-Dallas	185	205	90.24%
Pleasantville School System	682	713	95.65%
Twin Cedars Community School	309	342	90.35%
Total	2780	2935	94.72%

Source: [Interactive: What is the vaccination rate in your school district? | The Gazette](#)



## MATERNAL AND INFANT HEALTH (4A AND 4B)

Tracking maternal and infant care patterns are vital in understanding the foundation of family health.

	Health Indicator	Marion Co (2020)	Marion Co (2018)	Marion Co (2016)	Marion Co (2013)	Trend	State of Iowa
4a	Mothers Who Began Prenatal Care in First Trimester (Iowa Health Fact Book)	629	652	636	88.40%		Rank 20
4a	Annual Birth Outcome % Preterm (March of Dimes)	8.70%	8.50%	--	--		9.90%
4a	Low Birth Weight (<2500 Grams) (Iowa Health Fact Book)	46	52	45	6.10%		Rank 22
4a	Mothers Who Smoked During Pregnancy (Iowa Health Fact Book)	89	164	142	--		Rank 19
4a	Mothers under Age 20 (Iowa Health Fact Book)	22	30	52	--		Rank 23
4a	Out-of-Wedlock Births (Iowa Health Fact Book)	185	218	193	115		Rank 25
4a	Average Monthly WIC Participation ( <a href="https://datacenter.kidscount.org">https://datacenter.kidscount.org</a> )	23.30%	23.50%	18%	24.50%		23.9% (2019)

## LIVE BIRTHS (4B)

Source: Iowa Department of Public Health, Vital Statistics

	Vital Statistics	Marion County, Iowa	Trend	State of Iowa
4	Total Live Births, 2007	451		40,835
4	Total Live Births, 2009	401		39,662
4	Total Live Births, 2010-11	732		38,204
4	Total Live Births, 2011-13	758		39,013
4	Total Live Births, 2015-2016	755		39,482
4	Total Live Births, 2017	360		
4	Total Live Births, 2019-2020	715		36,058

## HOSPITAL SPECIFIC DETAILS (5)

Understanding provider access and disease patterns are fundamental in healthcare delivery.

	Health Indicator	Marion Co (2019)	Marion Co (2016)	Marion Co (2013)	Trend	State of Iowa
5	Primary Care Physicians per 1 (County Health Rankings)	1,140		983		1,360
5	Preventable Hospital Stays (County Health Rankings)	49	64	68		49
5	Patients Who Gave Their Hospital a Rating of 9 or 10 on a Scale from 0 (Lowest) to 10 (Highest) (CMS Hospital Compare)	81%	74%	--		78.0%
5	Patients Who Reported Yes, They Would Definitely Recommend the Hospital (CMS Hospital Compare)	74.6%	69.8%	--		72.0%
5	Average Time Patients Spent in the Emer. Department Before They Were Seen by a Healthcare Professional (CMS Hospital Compare)	21	28	--		25.26
5	Medicare Hospital Spending per Patient (Medicare Spending per Beneficiary) (CMS Hospital Compare)	Not Avail	Not Avail.	--		\$0.92
5	Unplanned Readmission Rate (new 2018) (CMS Hospital Compare)	15.3%	--	--		15.3% (national)

## BEHAVIORAL AND MENTAL HEALTH PROFILE

	Health Indicator	Marion Co (2022)	Marion Co (2019)	Marion Co (2016)	Marion Co (2013)	Trend	State of Iowa
6	Depression: Medicare Population (Center for Medicare and Medicaid Services)	20.06%	17%	15.80%	--		19.29%
6	Alcohol-Impaired Driving Deaths, (3 of 6 Total Driving Deaths) (County Health Rankings)	56.0%	44%	27%	--		27%
6	Poor Mental Health Days (County Health Rankings)	4.0	3.1	2	2.1		4.1

## HEALTH BEHAVIORS PROFILE (7A)

Knowing community health risk factors and disease patterns can aid in the understanding next steps to improve health.

	Health Indicator	Marion Co (2022)	Marion Co (2019)	Marion Co (2016)	Marion Co (2013)	Trend	State of Iowa
7a	Adult Obesity	35%	33%	30%	32%		34%
7a	Adult Smoking	17%	14%	18%	20%		17%
7a	Excessive Drinking	23%	21%	11%	12%		25%
7a	Physical Inactivity	25%	24%	23%	25%		26%
7a	Poor Physical Health Days	3.1	2.8	2.9	2.1		3.1
7a	Sexually Transmitted Infections	321.8	258.3	224	--		508.5

Source: County Health Ranking (7A)

## CHRONIC HEALTH PROFILE (7B)

	Health Indicator – Medicare Population	Marion Co (2022)	Marion Co (2019)	Marion Co (2016)	Trend	State of Iowa
7b	Asthma	2.92%	2.60%	2.60%		4.08%
7b	Atrial Fibrillation	9.19%	9.09%	8.40%		9.01%
7b	Cancer	7.65%	7.73%	6.80%		7.56%
7b	Chronic Kidney Disease	19.74%	19.53%	11.80%		20.91%
7b	COPD	10.48%	10.25%	9.80%		11.28%
7b	Diabetes	23.09%	22.90%	--		24.15%
7b	Heart Failure	11.80%	11.56%	12.20%		12.77%
7b	Hyperlipidemia	42.79%	36.92%	37.90%		38.88%
7b	Hypertension	56.18%	54.53%	49.40%		53.62%
7b	Osteoporosis	7.90%	6.63%	7.20%		5.99%
7b	Stroke	2.37%	2.18%	2.10%		2.91%

Source: Center for Medicare and Medicaid Services (7B) <https://cms-veda.maps.arcgis.com/apps/MapSeries/index.html?appid=2653fc1758474036a46c1a2f47d4d243>

## MORTALITY PROFILES

	Health Indicator	Marion Co (2022)	Marion Co (2019)	Marion Co (2016)	Marion Co (2013)	Trend	State of Iowa
8	Life Expectancy Females (Institute for Health Metrics and Evaluation)	80.8	81.8	81.6	NA		81.9
8	Life Expectancy Males (Institute for Health Metrics and Evaluation)	76.6	76.7	76.1	--		77.5
8	Infant Deaths (Iowa Health Fact Book)	6	9	13	--		Rank 17

The leading causes of county deaths are listed below.

## CAUSE OF DEATH

#	Causes of Death by County of Residence	Marion Co (2016-20)	Marion Co (2011-15)	Marion Co (2009-13)	Marion Co (2009-12)	Trend (2014)	State of Iowa Rank
	All Causes	1,724	1,678	1,602	454		21
1	All Cancer	1026	387	369	--		21
2	Heart Disease	475	508	422	--		19
3	Lung Cancer	116	106	94	--		24
4	Chronic Obstructive Pulmonary Disease	108	90	69	--		21
5	Stroke	84	90	94	--		20
6	Accidents and Adverse Effects	83	65	61	--		21
7	Alzheimer's Disease	70	95	85	--		27
8	Pneumonia/Influenza	45	48	54	--		14
9	Diabetes Mellitus	44	31	36	--		23
10	Suicide	29	25	--	--		20
11	Falls	24	20	--	--		27
12	Firearms	21	19	--	--		16
13	All Transportation	18	19	--	--		28
14	Motor Vehicle Traffic	13	15	--	--		37

Source: Iowa Health Fact Book

PREVENTATIVE HEALTH (COUNTY HEALTH RANKINGS)

	Health Indicator	Marion Co (2022)	Marion Co (2018)	Marion Co (2015)	Trend	State of Iowa
9	Access to Exercise Opportunities	73%	83%	84%		73%
9	2-Year-Old Coverage of Individual Vaccines and Selected Vaccination Series, (idph.iow.gov/Health/Immunizations/Childhood-Immunizations/Childhood-Immunization-Data)	87.9%	75%	59%		71.00%
9	Diabetic Prevalence	11%	9%	9%		10.1%
9	Mammography Screening	56%	56%	71.10%		53%
9	Limited Access to Healthy Food	3%	3%	3%		6.00%
9	Percent Annual Check-Up Visit with PCP	NA	NA	NA		NA
9	Percent Annual Check-Up Visit with Dentist	NA	NA	NA		NA
9	Percent Annual Check-Up Visit with Eye Doctor	NA	NA	NA		NA

UNINSURED PROFILES (SOURCE: IOWA HEALTH FACT BOOK)

	Health Indicator	Marion Co (2022)	Marion Co (2018)	Marion Co (2015)	Trend	State of Iowa
10a	Uninsured (Under 65), 2010	4.20%	4.00%	8.50%		5.7%

CHARITY CARE AMOUNT

	Knoxville Hospital and Clinics	FY 21	FY 20	FY 19	FY 18	TREND
10b	Charity Care	\$347,072	\$298,168	\$224,041	\$104,503.00	

## INVENTORY OF EXISTING COUNTY RESOURCES

### Community Health Partners – Detailed List

#### Family Medicine

##### **Knoxville Hospital & Clinics**

##### **Knoxville Clinic**

1202 W Howard  
Knoxville, IA 50138  
641-828-7211

Jennifer Coxe, ARNP  
Martha Errthum, DO  
Thomas Hoehns, MD  
Cynthia Hoque, DO  
Ryan Laughlin, DO  
James Law, DO  
Shannon Remington, DO  
Kate Ripperger, ARNP  
Natalie Rowley, PA  
Bhama J., MD  
Danise Hyatt, ARNP  
Jared Rietveld, DO

##### **Knoxville Hospital & Clinics**

##### **Red Rock Healthcare**

615 Washington  
Pella, IA 50219  
641-628-2222  
Laci Dykstra, ARNP

##### **Knoxville Hospital & Clinics**

##### **EJ McKeever Medical Clinic**

113 N Main St  
Melcher, IA 50163  
641-947-2121

##### **Knoxville Hospital & Clinics**

##### **Pleasantville Clinic**

104 N Washington  
Pleasantville, IA 50225  
515-848-3113  
Brandi Booth, ARNP  
Shannon Remington, DO

##### **Pella Regional Health Center Knoxville Clinic - Family Practice**

1208 N. Lincoln Knoxville, IA 50138  
641-828-3832

Maria Lao, MD  
Kevin Mace, DO  
Richard Posthuma, MD  
Craig Wittenberg, MD

##### **Melcher Clinic**

113 N Main St  
Melcher, IA 50163  
641-947-2080  
Laurie Goff, ARNP

#### Emergency Dept./Medical Surgical

##### **Knoxville Hospital & Clinics**

1002 S Lincoln  
Knoxville, IA 50138  
641-842-2151  
Logan Miller, DO  
Samantha Keady, DO  
Dylan Lowe, DO

#### General Surgery

##### **Knoxville Hospital & Clinics**

##### **Surgical Clinic**

1202 W Howard  
Knoxville, IA 50138  
641-842-1555  
Paul Conte, MD  
Timothy Mayfield, MD

#### Allergy

##### **Knoxville Hospital & Clinics**

##### **Allergy**

1002 S Lincoln  
Knoxville, IA 50138  
641-842-1555  
Ravinder Agarwal, MD

#### Anesthesia

##### **Knoxville Hospital & Clinics**

##### **Anesthesia**

1002 S Lincoln  
Knoxville, IA 50138  
641-842-1555  
Eric Barrett

Cardiology

**Knoxville Hospital & Clinics  
Specialty Clinic  
Iowa Heart Center/Iowa Heart Mobile**  
1202 West Howard  
Knoxville, IA 50138  
515-235-5000 / 641-842-1555  
Martin Aronow, DO  
Jolene Runkel, ARNP

Chiropractic

**Chiropractic Health Center**  
204 E Montgomery St.  
Knoxville, IA 50138  
641-842-2239  
LeeAnn Huff, DC

**Knoxville Chiropractic Clinic**  
115 E Main Street  
Knoxville, IA 50138  
641-842-3007  
Dr. Larry Formanek, DC

**Precision Chiropractic**  
401 East Main Street  
Knoxville, IA 50138  
641-828-7228  
Jenny Slykhuis, DC

**The Chiropractic Hut  
Liautaud Family Chiropractic**  
114 1/2 E. Monroe St  
Pleasantville, IA 50225  
515-848-3334

Dentists

**Willham Orthodontics**  
401 E. Robinson St  
Knoxville, IA 50138  
515-537-9330  
Oliver Lee Willham

**Dental Designs**  
401 E. Robinson St  
Knoxville, IA 50138 641-828-8778  
Lisa Holst, DDS

**Knoxville Dental Associates**  
112 S First Street  
Knoxville, IA 50138  
641-842-5288  
Travis Egesdal, DDS

**Stone Ridge Dental**  
1008 West Pleasant St  
Pleasantville, IA 50225  
515-848-3691  
Thomas Mohr, DDS  
Alec Klise, DDS  
Ashley Millang, DDS

**Knoxville Dental Center P.C.**  
211 S Second  
Knoxville, IA 50138  
641-828-7777  
Andrew Secory, DDS

Dermatology/Plastic Surgery

**Knoxville Hospital & Clinics  
Specialty Clinic**  
1202 W Howard  
Knoxville, IA 50138  
641-842-1555  
Katherine Billue, MD  
Heidi Curtis, ARNP

Electromyography

**Knoxville Hospital & Clinics  
Specialty Clinic  
Capital Orthopaedics & Sports Medicine**  
1008 Bell Avenue, Suite 105  
Knoxville, IA 50138  
515-440-2676  
Jeffrey Pederson, DO

ENT

**Knoxville Hospital & Clinics  
Specialty Clinic**  
1002 S. Lincoln  
Knoxville, IA 50138  
641-842-1555  
Stephen Griffith, MD

Home Care Agencies**Quality Home Care Professionals**

101 E Marion  
Knoxville, IA 50138  
641-828-7889

**Iowa Home Care**

909 W Pleasant  
Knoxville, IA 50138  
641-205-1000

**Home Instead Senior Care**  
888-331-1023

**Marion County  
Public Health**

Kim Dorn, Director  
2003 N Lincoln  
Knoxville, IA 50138  
641-828-2238

**Every Step Hospice**

213 E Main, Suite 103  
Knoxville, IA 50138

Internal Medicine**Knoxville Hospital & Clinics**

1202 West Howard  
Knoxville, IA 50138  
641-828-7211

Bhama Jayaveerapandian, MD

Nursing Home/Assisted Living**Accura HealthCare of Knoxville**

606 N 7th Street  
Knoxville, IA 50138  
641-842-2187

**Accura Healthcare of Pleasantville**

909 N. State  
Pleasantville, IA 50225  
515-848-571

**West Ridge Nursing Center**

1904 W Howard  
Knoxville, IA 50138  
641-842-3153

**Homestead****Assisted Living & Memory Care**

908 S Park Lane Drive  
Knoxville, IA 50138  
641-450-1966

**Knoxville Residential**

205 N Iowa  
Knoxville, IA 50138  
641-842-4618

OB/Gynecology**Knoxville Hospital & Clinics****Specialty Clinic****Obstetrical & Gynecological Associates**

1202 W Howard  
Knoxville, IA 50138  
641-842-1555

Darryl Johnson, DO

Oncology**Knoxville Hospital & Clinics****Specialty Clinic**

1202 West Howard  
Knoxville, IA 50138  
641-842-1555

Abdelaziz Elhaddad, MD

Ophthalmology**Knoxville Hospital & Clinics****Specialty Clinic****Wolfe Eye Clinic**

1202 West Howard  
Knoxville, IA 50138  
515-224-9533

Dr. Steven Johnson

Optometrist**Eye Health Solutions**

100 S 5th Street  
Knoxville, IA 50138  
641-842-3616 F: 641-842-5453  
Jason Maasdam, OD,  
Lily Maasdam, OD

**Walmart Vision Center**

814 W Bell Avenue  
Knoxville, IA 50138  
641-828-7993



Orthopaedics

**Knoxville Hospital & Clinics  
Specialty Clinic  
Capital Orthopaedics & Sports Medicine**  
1202 W Howard  
Knoxville, IA 50138  
515-440-2676  
Mark Fish, DO, FAOAO  
Todd Peterson, DO

Orthotics/Prosthetics

**Knoxville Hospital & Clinics  
Specialty Clinic  
American Prosthetics and Orthotics**  
1008 Bell Avenue, Suite 105  
Knoxville, IA 50138  
515-224-0537  
Adam McFarlane  
Michael Hatfield

Physical Therapy/Rehabilitation Services

**Knoxville Hospital & Clinics  
21<sup>st</sup> Century Rehab**  
1002 S Lincoln St.  
Knoxville, IA 50138  
641-842-1464  
Jessica Camp, DPT  
Brooke Shelquist, DPT  
Sara Boyce, PTA  
Austin Ollinger, PTA

Podiatry

**Knoxville Hospital & Clinics  
Specialty Clinic  
Capital Orthopaedics & Sports Medicine**  
1202 West Howard  
Knoxville, IA 50138  
515-440-2676  
Michael Lee, DPM

Pulmonology

**Knoxville Hospital & Clinics  
Specialty Clinic**  
1202 West Howard  
Knoxville, IA 50138  
641-842-1555  
Neil Horning, MD  
Angela Beckel, ARNP

Rheumatology

**Knoxville Hospital & Clinics  
Specialty Clinic**  
1002 S. Lincoln  
Knoxville, Iowa 20138  
641-842-1555  
Libby Dassow, PA

Speech-Language Therapy

**Knoxville Hospital & Clinics  
Specialty Clinic  
Central Rehabilitation**  
515-224-0979  
Megan Gerjets, MS CCC-SLP

Urology

**Knoxville Hospital & Clinics  
Specialty Clinic  
Surgical Associates of Grinnell**  
1202 West Howard  
Knoxville, IA 50138  
641-842-1555  
Kevin Birusingh, MD

Vascular Surgery

**Knoxville Hospital & Clinics  
Specialty Clinic**  
1202 West Howard  
Knoxville, IA 50138  
515-875-9090  
David Chew, MD  
Veterans Care

**VA Central IA Healthcare System  
Community Based Outpatient Clinic**  
1607 N Lincoln  
Knoxville, IA 50138  
641-828-5020

**Marion County Veteran Affairs**  
214 E Main  
Knoxville, IA 50138  
641-828-2201

**Knoxville Hospital & Clinics (KHC)**  
1002 South Lincoln  
Knoxville, IA 50138  
641-

## Community Resources – Inventory of Services

### Inventory of Health Services – Marion County, Iowa

Inventory of Health Services - Knoxville Hospital & Clinics, Public Health Department, and Primary Service Area (Marion County, IA)				
Cat	Healthcare Services Offered in County: Yes / No	KHC	Health Dept	County
Clinic	Primary Care	Yes	No	Yes
Hosp	Alzheimer Center	No	No	Yes
Hosp	Ambulatory Surgery Centers	Yes	No	Yes
Hosp	Arthritis Treatment Center	No	No	No
Hosp	Weight Control Services/Diabetic Education	Yes	Yes	Yes
Hosp	Birthing/LDR/LDRP Room	No	No	Yes
Hosp	Infusion/Chemo Services	Yes	No	Yes
Hosp	Burn Care	No	No	No
Hosp	Cardiac Rehabilitation	Yes	No	Yes
Hosp	Cardiac Surgery	No	No	No
Hosp	Cardiology/Vascular Services	Yes	No	Yes
Hosp	Case Management	Yes	Yes	Yes
Hosp	Chaplaincy/Pastoral Care Services	Yes	No	Yes
Hosp	Chemotherapy	Yes	No	Yes
Hosp	Colonoscopy	Yes	No	Yes
Hosp	Crisis Prevention	No	Yes	Yes
Hosp	CTScanner	Yes	No	Yes
Hosp	Diagnostic Radioisotope Facility	Yes	No	No
Hosp	Diagnostic/Invasive Catheterization	No	No	No
Hosp	Electron Beam Computed Tomography (EBCT)	No	No	No
Hosp	Enrollment Assistance Services	Yes	No	Yes
Hosp	Extracorporeal Shock Wave Lithotripter (ESWL)	No	No	No
Hosp	Fertility Clinic	No	No	No
Hosp	FullField Digital Mammography (FFDM)	Yes	No	Yes
Hosp	Genetic Testing/Counseling	No	No	No
Hosp	Geriatric Services	No	Yes	Yes
Hosp	Heart	No	No	No
Hosp	Hemodialysis	No	No	Yes
Hosp	HIV/AIDS Services	No	No	No
Hosp	Image-Guided Radiation Therapy (IGRT)	No	No	No
Hosp	Inpatient Acute Care - Hospital Services	Yes	No	Yes
Hosp	Intensity-Modulated Radiation Therapy (IMRT) 161	No	No	No
Hosp	Intensive Care Unit	No	No	No
Hosp	Intermediate Care Unit	Yes	No	Yes
Hosp	Interventional Cardiac Catheterization	No	No	No
Hosp	Isolation room	Yes	No	Yes
Hosp	Kidney	No	No	Yes
Hosp	Liver	No	No	No
Hosp	Lung	Yes	No	Yes
Hosp	Magnetic Resonance Imaging (MRI)	Yes	No	Yes
Hosp	Mammograms	Yes	Access Only	Yes
Hosp	Mobile Health Services	Yes	No	Yes
Hosp	Multislice Spiral Computed Tomography (<64 slice CT)	Yes	No	Yes

Inventory of Health Services - Knoxville Hospital & Clinics, Public Health Department, and Primary Service Area (Marion County, IA)				
Cat	Healthcare Services Offered in County: Yes / No	KHC	Health Dept	County
Hosp	Neonatal	No	No	No
Hosp	Neurological Services	No	No	No
Hosp	Obstetrics*	No	No	Yes
Hosp	Occupational Health Services	Yes	No	Yes
Hosp	Oncology Services	Yes	No	Yes
Hosp	Orthopedic Services	Yes	No	Yes
Hosp	Outpatient Surgery	Yes	No	Yes
Hosp	Pain Management	Yes	No	Yes
Hosp	Palliative Care Program	No	No	No
Hosp	Pediatric	Yes	No	Yes
Hosp	Physical Rehabilitation	Yes	No	Yes
Hosp	Positron Emission Tomography (PET)	Yes	No	Yes
Hosp	Positron Emission Tomography/CT (PET/CT)	Yes	No	Yes
Hosp	Psychiatric Services	No	No	Yes
Hosp	Radiology, Diagnostic	Yes	No	Yes
Hosp	Radiology, Therapeutic	No	No	No
Hosp	Reproductive Health	No	No	No
Hosp	Robotic Surgery	No	No	Yes
Hosp	Shaped Beam Radiation System 161	No	No	No
Hosp	Single Photon Emission Computerized Tomography	No	No	No
Hosp	Sleep Center	Yes	No	Yes
Hosp	Social Work Services	Yes	Yes	Yes
Hosp	Sports Medicine	Yes	No	Yes
Hosp	Stereotactic Radiosurgery	No	No	No
Hosp	Swing Bed Services	Yes	No	Yes
Hosp	Transplant Services	No	No	No
Hosp	Trauma Center-Level IV	Yes	No	Yes
Hosp	Ultrasound	Yes	No	Yes
Hosp	Women's Health Services	Yes	Yes	Yes
Hosp	Wound Care	Yes	No	Yes
SR	Adult Day Care Program	No	No	No
SR	Assisted Living	No	No	Yes
SR	Home Health Services	No	Yes	Yes
SR	Hospice	Yes	No	Yes
SR	Long-Term Care	No	No	Yes
SR	Nursing Home Services	No	No	Yes
SR	Retirement Housing	No	No	Yes
SR	Skilled Nursing Care	Yes	No	Yes
ER	Emergency Services	Yes	No	Yes
ER	Urgent Care Center	No	No	No
ER	Ambulance Services	No	No	Yes
SERV	Alcoholism-Drug Abuse	No	No	Yes
SERV	Blood Donor Center	No	No	No
SERV	Chiropractic Services	No	No	Yes
SERV	Complementary Medicine Services	No	Yes	No
SERV	Dental Services	No	Yes	Yes
SERV	Fitness Center	No	No	Yes

Inventory of Health Services - Knoxville Hospital & Clinics, Public Health Department, and Primary Service Area (Marion County, IA)				
Cat	Healthcare Services Offered in County: Yes / No	KHC	Health Dept	County
SERV	Health Education Classes	Yes	Yes	Yes
SERV	Health Fair (Annual)	Yes	Yes	Yes
SERV	Health Information Center	Yes	Yes	Yes
SERV	Health Screenings	Yes	Yes	Yes
SERV	Meals on Wheels	No	Yes	Yes
SERV	Nutrition Programs	Yes	Yes	Yes
SERV	Patient Education Center	No	No	No
SERV	Support Groups	Yes	Yes	Yes
SERV	Teen Outreach Services	No	No	Yes
SERV	Tobacco Treatment/Cessation Program	Yes	By Referral	Yes
SERV	Transportation to Health Facilities	No	No	Yes
SERV	Wellness Program	Yes	Yes	Yes

## Providers Delivering Care – Marion County, Iowa

## CARE DELIVERY

Care Providers			
	FTE Physicians		FTE Allied Staff
# of FTE Providers working in Primary Service Area (PSA)	PSA Based DRs	Visiting DRs *	PSA Based PA / NP
<b>Primary Care:</b>			
Family Practice	20.0		5.0
Internal Medicine/Geriatrician	4.0		
Obstetrics/Gynecology	1.00	0.25	
Pediatrics			
<b>Medicine Specialists/ Visiting Specialist:</b>			
Allergy/Immunology		1.25	
Cardiology		1.5	0.5
Dermatology	1.0		2.25
Endocrinology			
ENT (Ear/Nose/Throat)		2.25	1.0
Gastroenterology			
Oncology/Radiology		1.0	
Orthopedics /Surgery	6.0		3.0
Orthotics/Prosthetics			
Infectious Diseases			
Neonatal/Perinatal	1.0		
Nephrology		1.0	
Neurology			
Occupational Medicine	1.0		1.0
Physical Medicine/Rehab			
Podiatry		1.0	
Psychiatry			1.0
Pulmonary	1.0		0.25
Rheumatology	1.0		0.25
<b>Surgery Specialists:</b>			
General Surgery/Colon/Oral	3.0		1.0
Neurosurgery			
Ophthalmology/Optometry	12.0		
Orthopedics			
Otolaryngology (ENT)			
Plastic/Reconstructive	0.25		
Thoracic/Cardiovascular/Vascular	0.50		

Care Providers			
	FTE Physicians		FTE Allied Staff
# of FTE Providers working in Primary Service Area (PSA)	PSA Based DRs	Visiting DRs *	PSA Based PA / NP
Urology		1.5	
Women's Health		0.5	
Vascular Surgery		1.25	
<b>Hospital Based:</b>			
Anesthesia/Pain	1.5	1.0	
Audiology	3.0		
Electromyography		0.25	
Emergency	7.0		1.0
Radiology		3.0	
Pathology		0.25	
Hospitalist			
<b>Non-Hospital Based (Community):</b>			
Chiropractor	11.0		
Optometrist	12.0		
Dentist	14.0		

## Service Directory

### EMERGENCY NUMBERS

Police/ Sheriff	911
Fire	911
Ambulance	911

### NON-EMERGENCY / MUNICIPAL NUMBERS (MARION COUNTY, IOWA)

Marion County Sheriff (Police)	641-828-2220
Marion County EMS	641-828-2256
Knoxville Fire	641-828-0586
Knoxville Police	641-828-0541
Pleasantville Fire	515-848-5123
Pleasantville Police	515-848-3112

### QUICK REFERENCE PHONE GUIDE

Al-Anon "Free to Be Me"	1-515-277-5059
Alcoholics Anonymous	1-515-282-8550
Alzheimer's Disease Helpline	1-800-272-3900
American Cancer Society	1-800-227-2345
American Red Cross	1-800-733-2767
Arthritis Foundation	1-800-283-7800
Central Iowa Crisis Line	1-800-332-4224
Child/Adult Abuse Hotline	1-800-362-2178
Crossroads Mental Health	1-641-782-8457
Dependent Adult Abuse Hotline	1-800-362-2178
Domestic Abuse Hotline	1-800-770-1650
Gambling Hotline	1-800-238-7633
Iowa Arson/Crime Hotline	1-800-532-1459
Iowa Child Abuse Reporting Hotline	1-800-362-2178
Iowa State Patrol Emergency	1-800-525-5555
Medicare	1-800-MEDICARE
National Alcohol Hotline	1-800-252-6465
National Center for Missing and Exploited Children	1-800-THE LOST
National Drug Helpline	1-844-289-0879
National Suicide Prevention Lifeline	1-800-273-TALK
Poison Control	1-800-222-1222
Quitline Iowa	1-800-784-8669
Rape, Abuse, and Incest National Hotline	1-800-656-HOP
Senior Health Insurance Info Program (SHIIP)	1-800-351-4664
Substance Abuse Information & Treatment	1-800-662-HELP
Suicide Prevention Hotline	1-800-SUICIDE
Teen Line (Red Cross)	1-800-443-8336
United Way Resources & Referral Hotline	211

## GENERAL ONLINE HEALTH RESOURCES

### Doctors and Dentists—General

[AMA Physician Select: Online Doctor Finder](#) (American Medical Association) [DocFinder](#) (Administrators in Medicine) [Find a Dentist](#) (Academy of General Dentistry) [Find a Dentist: ADA Member Directory](#) (American Dental Association) [Physician Compare](#) (Centers for Medicare & Medicaid Services)

### Hospitals and Clinics—General

[Find a Health Center](#) (Health Resources and Services Administration) [Find a Provider: TRICARE Provider Directories](#) (TRICARE Management Activity) [Hospital Quality Compare](#) (Centers for Medicare & Medicaid Services)

### Doctors and Dentists—Specialists

[ACOG's Physician Directory](#) (American College of Obstetricians and Gynecologists) [ACR: Geographic Membership Directory](#) (American College of Rheumatology) [American College of Surgeons Membership Directory](#) (American College of Surgeons) [American Osteopathic Association D.O. Database](#) (American Osteopathic Association) [ASGE: Find a Doctor](#) (American Society for Gastrointestinal Endoscopy) [Cancer Genetics Services Directory](#) (National Cancer Institute) [Child and Adolescent Psychiatrist Finder](#) (American Academy of Child and Adolescent Psychiatry) [Dystonia: Find a Health Care Professional](#) (Dystonia Medical Research Foundation) [Expert Locator: Immunologists](#) (Jeffrey Modell Foundation) [Find a Dermatologic Surgeon](#) (American Society for Dermatologic Surgery) [Find a Dermatologist](#) (American Academy of Dermatology) [Find a Gastroenterologist](#) (American College of Gastroenterology) [Find a Gynecologic Oncologist](#) (Society of Gynecologic Oncologists) [Find a Hand Surgeon](#) (American Society for Surgery of the Hand) [Find a Hematologist](#) (American Society of Hematology) [Find a Neurologist](#) (American Academy of Neurology) [Find a Pediatric Dentist](#) (American Academy of Pediatric Dentistry) [Find a Pediatrician or Pediatric Specialist](#) (American Academy of Pediatrics) [Find a Periodontist](#) (American Academy of Periodontology) [Find a Physical Medicine & Rehabilitation Physician](#) (American Academy of Physical Medicine and Rehabilitation) [Find a Plastic Surgeon](#) (American Society of Plastic Surgeons) [Find a Podiatrist](#) (American Podiatric Medical Association) [Find a Thyroid Specialist](#) (American Thyroid Association) [Find a Urologist](#) (American Urological Association) [Find an ACFAS Physician](#) (American College of Foot and Ankle Surgeons) [Find an Allergist/Immunologist: Search](#) (American Academy of Allergy, Asthma, and Immunology) [Find an Endocrinologist](#) (Hormone Health Network) [Find an Eye M.D.](#) (American Academy of Ophthalmology) [Find an Interventional Radiologist](#) (Society of Interventional Radiology) [Find an Oncologist](#) (American Society of Clinical Oncology) [Find an Oral and Maxillofacial Surgeon](#) (American Association of Oral and Maxillofacial Surgeons) [Find an Orthopedic Foot and Ankle MD](#) (American Orthopedic Foot and Ankle Society) [Find an Otolaryngologist \(ENT\)](#) (American Academy of Otolaryngology--Head and Neck Surgery) [Finding an Eye Care Professional](#) (National Eye Institute) [GI Locator Service](#) (American Gastroenterological Association)

### Other Healthcare Providers

[AMTA's Find a Massage Therapist](#) (American Massage Therapy Association) [Cancer Genetics Services Directory](#) (National Cancer Institute) [Find a Diabetes Educator](#) (American Association of Diabetes Educators) [Find a Genetic Counselor](#) (National Society of Genetic Counselors) [Find a Midwife](#) (American College of Nurse-Midwives) [Find a Nurse Practitioner](#) (American Academy of Nurse Practitioners) [Find a Physical Therapist](#) (American Physical Therapy Association) [Find a Professional: Online Directory of Audiology and Speech-Language Pathology Programs](#) (American Speech-Language-Hearing Association) [Find a Registered Dietitian](#) (Academy of Nutrition and Dietetics) [Find a Therapist](#) (Anxiety Disorders Association of America) [Find an Audiologist](#) (American Academy of Audiology) [Manual Lymphatic Drainage Therapists](#) (National Lymphedema Network) [National Register of Health Service Providers in Psychology](#) (National Register of Health Service Providers in Psychology) [NCCAOM: Find Nationally Certified Practitioners](#) (National Certification Commission for Acupuncture and Oriental Medicine) [Search for an Emergency Contraception Provider in the United States](#) (Princeton University, Office of Population Research)

### Hospitals and Clinics—Specialized

[Accredited Birth Centers](#) (Commission for the Accreditation of Birth Centers) [Alzheimer's Disease Research Centers](#) (National Institute on Aging) [Cystic Fibrosis Foundation: Find a Chapter](#) (Cystic Fibrosis Foundation) [Cystic Fibrosis Foundation: Find an Accredited Care Center](#) (Cystic Fibrosis Foundation) [Dialysis Facility Compare](#) (Centers for Medicare & Medicaid Services) [FDA Certified Mammography Facilities](#) (Food and Drug Administration) [Find a Free Clinic](#) (National Association of Free Clinics) [Find an Indian Health Service Facility](#) (Indian Health Service) [Find Treatment Centers](#) (American Cancer Society) [Genetics Clinic Directory Search](#) (University of Washington) [Locate a Sleep Center in the United States by Zip Code](#) (American Academy of Sleep Medicine) [MDA ALS Centers](#) (Muscular Dystrophy Association) [Mental Health Services Locator](#) (Substance Abuse and Mental Health Services Administration) [NCI Designated Cancer Centers](#) (National Cancer Institute) [Neurofibromatosis Specialists](#) (Children's Tumor Foundation) [Post-Polio Directory 2011: Post-Polio Clinics, Health Professionals, Support Groups](#) (Post-Polio Health International including International Ventilator Users Network) [Spina Bifida Clinic Directory](#) (Spina Bifida Association of America) [Substance Abuse Treatment Facility Locator](#) (Substance Abuse and Mental Health Services Administration) [Transplant Center Search Form](#) (BMT InfoNet) [U.S. NMDP Transplant](#)



[Centers](#) (National Marrow Donor Program) [VA Health Care Facilities Locator & Directory](#) (Veterans Health Administration) [Where to Donate Blood](#) (AABB) [Where to Donate Cord Blood](#) (National Marrow Donor Program)

### Other Healthcare Facilities and Services

[Alzheimer's Disease Resource Locator](#) (Fisher Center for Alzheimer's Research Foundation) [American College of Radiology Accredited Facility Search](#) (American College of Radiology) [APA District Branch / State Association Directory](#) (American Psychiatric Association) [Directory of Organizations \(Deafness and Communication Disorders\)](#) (National Institute on Deafness and Other Communication Disorders) [Dog Guide Schools in the United States](#) (American Foundation for the Blind) [Eldercare Locator](#) (Dept. of Health and Human Services) [Find a Hospice or Palliative Care Program](#) (National Hospice and Palliative Care Organization) [Find Services \(for People with Vision Loss\)](#) (American Foundation for the Blind) [Find Urgent Care Centers by State](#) (Urgent Care Association of America) [Genetic Testing Laboratory Directory](#) (University of Washington) [Home Health Compare](#) (Centers for Medicare & Medicaid Services) [Medicare: Helpful Contacts](#) (Centers for Medicare & Medicaid Services) [Muscular Dystrophy Association Clinics and Services](#) (Muscular Dystrophy Association) [National Foster Care and Adoption Directory Search](#) (Children's Bureau) [Nursing Home Compare](#) (Centers for Medicare & Medicaid Services) [Organizations That Offer Support Services](#) (National Cancer Institute) [Poison Control Centers](#) (American Association of Poison Control Centers) [Resources and Information for Parents about Braille](#) (American Foundation for the Blind) [State-Based Physical Activity Program Directory](#) (Centers for Disease Control and Prevention) [TSA Chapters in the USA](#) (Tourette Syndrome Association) [Violence against Women: Resources by State](#) (Dept. of Health and Human Services, Office on Women's Health) [Where to Find Hair Loss Accessories and Breast Cancer Products](#) (American Cancer Society)

SOURCE: MedlinePlus provides links to directories to help you find libraries, health professionals, services and facilities. NLM does not endorse or recommend the organizations that produce these directories, nor the individuals or organizations that are included in the directories

## DATA DETAILS

## Plan Tactics for Marion County, Iowa – 2019 to 2022

CHNA Implementation Plan Tactics - Marion County (Knoxville Hospital & Clinics/ Marion County Public Health)						
CHNA Health Needs Tactics - starting 06/30/19 to 6/30/2022						
	CHNA Health Areas of Need		"Specific Actions" to address community health need or "Reasons Why Hospital Will Not" address need.	LEAD	Partners	Timeframe
1	Mental Health	a	ACT program (Access Center) Program for adults for Mental Health opening (Nov. 2019)	Cross Region (IDPH)	KHC, MC Public Health, Schools, Police/Sheriff, MHDS Region (Cross), Marion Co Suicide Prevention, MC3 (Marion County Change Coalition), Pella Youth Coalition, ACT Team, Insurance/payors, governmental assistance	2019-2020
Increase the provided and breadth of services for Mental Health needs in the communities.		b	Assess availability for, or, potential partnerships for Psych Medical Provider	KHC		2020
		c	Assess availability for, or, potential partnerships for Mental Health Providers	KHC		2020
		d	Investigate new and spread current mental health education programs including in schools and community health services	Public Health		2019-2022
		e	Participate in lobbying legislation efforts	KHC		2019-2022
2	Substance Abuse	a	Substance abuse professional available through partnership at KHC	UCS Healthcare & KHC	KHC, UCS Healthcare, Schools, The Well, Neighbor Helping Neighbor, DHS, Law enforcement, MC3 (Marion County Change Coalition)	2019-2020
Reduce the concern for and presence of substance abuse related health/safety issues.		b	Develop partnership and define program for support group at hospital	KHC		
		c	Partner for resources and education with UCS Healthcare	KHC		
		d	Partner with UCS, DHS, Law Enforcement, and MC3 for transportation services	KHC		
3	Chronic Disease Management	a	Exercise programs increased in different groups around the community (example – Get Moving More)	Knoxville Community Wellness	KHC, Knoxville Community Wellness, Tobacco Coalition, Schools	2019 - 2022
Reduce impact of chronic disease on		b	Partner with and encourage community use of Medically Oriented Gym (MOG)	MOG		

physical and mental health for residents in the communities.	c	Cooking classes - work with KHC Dietician and medical individuals (such as KHC Dietitian). Management tour of healthy eating at local grocery stores and store personnel, as possible.	KHC	(nurses), Recreation Center (Exercise Classes), grocery stores, MOG (Medically oriented Gym)	
	d	Continue and encourage Employee Wellness programs at businesses (examples: weight loss, smoking sensation, cooking healthy, etc.)	Chamber/ Businesses		
	e	Increase employee incentives programs in organizations throughout community (example: labs, possible screening on job, etc.)	Knoxville Community Wellness		
<b>4 Transportation</b>	a	Develop plan for off-hour transportation services including business systems / route (charge?)	MC Public Health	HIRTA, Uber, Taxi, Families, Churches, 3M, Weiler Group, Walmart, The Well Resource Center	2019-2022
	b	Develop plan for immediate transportation needs including awareness of resources	MC Public Health		
	c	Explore the opportunity for organized volunteer system for transportation in communities	The Well Center		
	d	Explore potential transportation route for Preschool to daycare	MC Public Health		
Make accessible (easy) for individuals to use with reasonable access & affordability.					

## Iowa Hospital Data (Secondary Research)

### Ambulatory Surgery



**Patient Type:** Outpatient  
**Place of Service:** Amb Surgery  
**Template Name:** Market and Facility  
**Report Name:** CHNA Amb Surgery 2017-2021  
**Facility:** Knoxville Hospital & Clinics  
**Market Area:** Knox MD Pville  
**Time Period:** 2017 Q1 through 2021 Q4



State/County/Zip	Knox MD Pville			Knoxville Hospital & Clinics			Market Share
	Measures	% of Col.	Avg. Charges	Measures	% of Col.	Avg. Charges	
<b>Iowa</b>							
Marion							
50062	401	3.4	\$13,655	97	2.8	\$5,441	24.2
50138	9,148	76.8	\$11,154	2,820	80.8	\$6,328	30.8
50163	642	5.4	\$13,561	181	5.2	\$5,457	28.2
50225	1,725	14.5	\$12,866	390	11.2	\$5,953	22.6
<b>Marion Total</b>	<b>11,916</b>	<b>100.0</b>	<b>\$11,616</b>	<b>3,488</b>	<b>100.0</b>	<b>\$6,216</b>	<b>29.3</b>
<b>Iowa Total</b>	<b>11,916</b>	<b>100.0</b>	<b>\$11,616</b>	<b>3,488</b>	<b>100.0</b>	<b>\$6,216</b>	<b>29.3</b>
<b>Report Totals:</b>	<b>11,916</b>	<b>100.0</b>	<b>\$11,616</b>	<b>3,488</b>	<b>100.0</b>	<b>\$6,216</b>	<b>29.3</b>

## Emergency Department



*We care about Iowa's health*

Patient Type: Outpatient  
 Place of Service: ER  
 Template Name: Market and Facility  
 Report Name: CHNA ER 2017-2021  
 Facility: Knoxville Hospital & Clinics  
 Market Area: Knox MD Pville  
 Time Period: 2017 Q1 through 2021 Q4



State/County/Zip	Knox MD Pville			Knoxville Hospital & Clinics			Market Share
	Measures	% of Col.	Avg. Charges	Measures	% of Col.	Avg. Charges	
<b>Iowa</b>							
Marion							
50062	1,083	3.2	\$3,314	693	3.1	\$2,511	64.0
50138	26,502	78.8	\$2,617	18,192	82.0	\$2,230	68.6
50163	1,815	5.4	\$3,347	1,100	5.0	\$2,502	60.6
50225	4,239	12.6	\$3,857	2,197	9.9	\$2,058	51.8
<b>Marion Total</b>	<b>33,639</b>	<b>100.0</b>	<b>\$2,835</b>	<b>22,182</b>	<b>100.0</b>	<b>\$2,235</b>	<b>65.9</b>
<b>Iowa Total</b>	<b>33,639</b>	<b>100.0</b>	<b>\$2,835</b>	<b>22,182</b>	<b>100.0</b>	<b>\$2,235</b>	<b>65.9</b>
<b>Report Totals:</b>	<b>33,639</b>	<b>100.0</b>	<b>\$2,835</b>	<b>22,182</b>	<b>100.0</b>	<b>\$2,235</b>	<b>65.9</b>

## Inpatient



*We care about Iowa's health*

Patient Type: Inpatient  
 Template Name: Market and Facility  
 Report Name: CHNA Inpatient 2017-2021  
 Facility: Knoxville Hospital & Clinics  
 Market Area: Knox MD Pville  
 Time Period: 2017 Q1 through 2021 Q4



State/County/Zip	Knox MD Pville					Knoxville Hospital & Clinics					Market Share
	Discharges	% of Col.	LOS	ALOS	Avg. Charges	Discharges	% of Col.	LOS	ALOS	Avg. Charges	
<b>Iowa</b>											
Marion											
50062	351	3.8	1,780	5.07	\$39,978	81	3.5	367	4.53	\$13,120	23.1
50138	6,785	73.6	31,569	4.65	\$36,531	1,951	83.7	7,865	4.03	\$12,169	28.8
50163	578	6.3	2,905	5.03	\$40,244	130	5.6	514	3.95	\$12,001	22.5
50225	1,500	16.3	7,635	5.09	\$42,233	169	7.3	662	3.92	\$11,931	11.3
<b>Marion Total</b>	<b>9,214</b>	<b>100.0</b>	<b>43,889</b>	<b>4.76</b>	<b>\$37,823</b>	<b>2,331</b>	<b>100.0</b>	<b>9,408</b>	<b>4.04</b>	<b>\$12,175</b>	<b>25.3</b>
<b>Iowa Total</b>	<b>9,214</b>	<b>100.0</b>	<b>43,889</b>	<b>4.76</b>	<b>\$37,823</b>	<b>2,331</b>	<b>100.0</b>	<b>9,408</b>	<b>4.04</b>	<b>\$12,175</b>	<b>25.3</b>
<b>Report Totals:</b>	<b>9,214</b>	<b>100.0</b>	<b>43,889</b>	<b>4.76</b>	<b>\$37,823</b>	<b>2,331</b>	<b>100.0</b>	<b>9,408</b>	<b>4.04</b>	<b>\$12,175</b>	<b>25.3</b>

## Observation



*We care about Iowa's health*

Patient Type: Outpatient  
 Place of Service: Observation  
 Template Name: Market and Facility  
 Report Name: CHNA Observation 2017-2021  
 Facility: Knoxville Hospital & Clinics  
 Market Area: Knox MD Pville  
 Time Period: 2017 Q1 through 2021 Q4



State/County/Zip	Knox MD Pville			Knoxville Hospital & Clinics			Market Share
	Measures	% of Col.	Avg. Charges	Measures	% of Col.	Avg. Charges	
<b>Iowa</b>							
Marion							
50062	52	4.0	\$2,957	13	4.4	\$6,888	25.0
50138	1,108	85.2	\$3,463	255	85.9	\$7,371	23.0
50163	36	2.8	\$7,099	14	4.7	\$7,494	38.9
50225	104	8.0	\$3,292	15	5.1	\$7,531	14.4
Marion Total	1,300	100.0	\$3,530	297	100.0	\$7,364	22.8
Iowa Total	1,300	100.0	\$3,530	297	100.0	\$7,364	22.8
Report Totals:	1,300	100.0	\$3,530	297	100.0	\$7,364	22.8

## Radiology and Lab



*We care about Iowa's health*

Patient Type: Outpatient  
 Place of Service: Lab Radiology  
 Template Name: Market and Facility  
 Report Name: CHNA Lab Rad 2017-2021  
 Facility: Knoxville Hospital & Clinics  
 Market Area: Knox MD Pville  
 Time Period: 2017 Q1 through 2021 Q4



State/County/Zip	Knox MD Pville			Knoxville Hospital & Clinics			Market Share
	Measures	% of Col.	Avg. Charges	Measures	% of Col.	Avg. Charges	
<b>Iowa</b>							
Marion							
50062	5,142	3.1	\$1,150	3,478	3.6	\$823	67.6
50138	136,856	81.4	\$972	75,464	77.9	\$713	55.1
50163	7,421	4.4	\$1,085	4,992	5.2	\$633	67.3
50225	18,733	11.1	\$1,048	12,918	13.3	\$548	69.0
Marion Total	168,152	100.0	\$991	96,852	100.0	\$691	57.6
Iowa Total	168,152	100.0	\$991	96,852	100.0	\$691	57.6
Report Totals:	168,152	100.0	\$991	96,852	100.0	\$691	57.6

## Outpatient – Other



*We care about Iowa's health*

Patient Type: Outpatient  
 Place of Service: Other outpatient  
 Template Name: Market and Facility  
 Report Name: CHNA Other Outpatient 2017-2021  
 Facility: Knoxville Hospital & Clinics  
 Market Area: Knox MD Pville  
 Time Period: 2017 Q1 through 2021 Q4



State/County/Zip	Knox MD Pville			Knoxville Hospital & Clinics			Market Share
	Measures	% of Col.	Avg. Charges	Measures	% of Col.	Avg. Charges	
<b>Iowa</b>							
<b>Marion</b>							
50062	868	3.0	\$571	628	3.0	\$559	72.4
50138	23,667	81.4	\$465	17,587	83.1	\$379	74.3
50163	1,133	3.9	\$435	766	3.6	\$193	67.6
50225	3,396	11.7	\$623	2,182	10.3	\$441	64.3
<b>Marion Total</b>	<b>29,064</b>	<b>100.0</b>	<b>\$485</b>	<b>21,163</b>	<b>100.0</b>	<b>\$384</b>	<b>72.8</b>
<b>Iowa Total</b>	<b>29,064</b>	<b>100.0</b>	<b>\$485</b>	<b>21,163</b>	<b>100.0</b>	<b>\$384</b>	<b>72.8</b>
<b>Report Totals:</b>	<b>29,064</b>	<b>100.0</b>	<b>\$485</b>	<b>21,163</b>	<b>100.0</b>	<b>\$384</b>	<b>72.8</b>

## Rehab Services (Therapy)



*We care about Iowa's health*

Patient Type: Outpatient  
 Place of Service: Therapy  
 Template Name: Market and Facility  
 Report Name: CHNA Therapy 2017-2021  
 Facility: Knoxville Hospital & Clinics  
 Market Area: Knox MD Pville  
 Time Period: 2017 Q1 through 2021 Q4



State/County/Zip	Knox MD Pville			Knoxville Hospital & Clinics			Market Share
	Measures	% of Col.	Avg. Charges	Measures	% of Col.	Avg. Charges	
<b>Iowa</b>							
<b>Marion</b>							
50062	653	3.3	\$1,211	375	3.5	\$1,157	57.4
50138	16,490	82.6	\$1,137	8,664	79.7	\$1,174	52.5
50163	849	4.3	\$1,276	577	5.3	\$1,296	68.0
50225	1,975	9.9	\$1,248	1,253	11.5	\$1,247	63.4
<b>Marion Total</b>	<b>19,967</b>	<b>100.0</b>	<b>\$1,156</b>	<b>10,869</b>	<b>100.0</b>	<b>\$1,188</b>	<b>54.4</b>
<b>Iowa Total</b>	<b>19,967</b>	<b>100.0</b>	<b>\$1,156</b>	<b>10,869</b>	<b>100.0</b>	<b>\$1,188</b>	<b>54.4</b>
<b>Report Totals:</b>	<b>19,967</b>	<b>100.0</b>	<b>\$1,156</b>	<b>10,869</b>	<b>100.0</b>	<b>\$1,188</b>	<b>54.4</b>

## CHNA Survey Detailed Survey, Findings (Primary Research)

### HEALTHCARE PERCEPTIONS & SATISFACTION for KNOXVILLE HOSPITAL & CLINICS and MARION COUNTY, IOWA

The leadership of Knoxville Hospital and Clinics and Marion County Public Health invite you to help improve the care and services of our community. Please help by answering these few short questions. Please answer honestly and your responses will be kept confidential.

\* Required

1. In general, how would you rate the overall quality of the healthcare delivered to your community? \*

Mark only one oval per row.

	Very Good	Good	Fair	Poor	Very Poor
Overall quality of care	<input type="radio"/>	<input type="radio"/>	<input type="radio"/>	<input type="radio"/>	<input type="radio"/>

2. How would you rate the following healthcare services? (Please select one box for each row)

Mark only one oval per row.

	Very Good	Good	Fair	Poor	Very Poor	Not Applicable (NA)
Children's Health	<input type="radio"/>	<input type="radio"/>	<input type="radio"/>	<input type="radio"/>	<input type="radio"/>	<input type="radio"/>
Chiropractor	<input type="radio"/>	<input type="radio"/>	<input type="radio"/>	<input type="radio"/>	<input type="radio"/>	<input type="radio"/>
Dentist(s)	<input type="radio"/>	<input type="radio"/>	<input type="radio"/>	<input type="radio"/>	<input type="radio"/>	<input type="radio"/>
Eye Doctor / Optometrist	<input type="radio"/>	<input type="radio"/>	<input type="radio"/>	<input type="radio"/>	<input type="radio"/>	<input type="radio"/>
Family Planning Services	<input type="radio"/>	<input type="radio"/>	<input type="radio"/>	<input type="radio"/>	<input type="radio"/>	<input type="radio"/>
Family Practice (Medical) Services	<input type="radio"/>	<input type="radio"/>	<input type="radio"/>	<input type="radio"/>	<input type="radio"/>	<input type="radio"/>
Home Care Agencies / Home Health	<input type="radio"/>	<input type="radio"/>	<input type="radio"/>	<input type="radio"/>	<input type="radio"/>	<input type="radio"/>
Hospice	<input type="radio"/>	<input type="radio"/>	<input type="radio"/>	<input type="radio"/>	<input type="radio"/>	<input type="radio"/>
Hospital Services	<input type="radio"/>	<input type="radio"/>	<input type="radio"/>	<input type="radio"/>	<input type="radio"/>	<input type="radio"/>
Nursing Home	<input type="radio"/>	<input type="radio"/>	<input type="radio"/>	<input type="radio"/>	<input type="radio"/>	<input type="radio"/>
Pharmacy	<input type="radio"/>	<input type="radio"/>	<input type="radio"/>	<input type="radio"/>	<input type="radio"/>	<input type="radio"/>
Public Health	<input type="radio"/>	<input type="radio"/>	<input type="radio"/>	<input type="radio"/>	<input type="radio"/>	<input type="radio"/>
School Nurse	<input type="radio"/>	<input type="radio"/>	<input type="radio"/>	<input type="radio"/>	<input type="radio"/>	<input type="radio"/>
Teen health (drinking, abuse, safety, pregnancy)	<input type="radio"/>	<input type="radio"/>	<input type="radio"/>	<input type="radio"/>	<input type="radio"/>	<input type="radio"/>

3. In your opinion, how much of a problem are the following causes of poor health in your community? (please select one box for each row)

Mark only one oval per row.

	Not a problem	Somewhat of a problem	Major problem	Don't know
Cancer	<input type="radio"/>	<input type="radio"/>	<input type="radio"/>	<input type="radio"/>
Diabetes	<input type="radio"/>	<input type="radio"/>	<input type="radio"/>	<input type="radio"/>
Drug Abuse	<input type="radio"/>	<input type="radio"/>	<input type="radio"/>	<input type="radio"/>
Substance Abuse	<input type="radio"/>	<input type="radio"/>	<input type="radio"/>	<input type="radio"/>
Heart Disease	<input type="radio"/>	<input type="radio"/>	<input type="radio"/>	<input type="radio"/>
Mental Illness	<input type="radio"/>	<input type="radio"/>	<input type="radio"/>	<input type="radio"/>
Obesity	<input type="radio"/>	<input type="radio"/>	<input type="radio"/>	<input type="radio"/>
Pneumonia / Flu	<input type="radio"/>	<input type="radio"/>	<input type="radio"/>	<input type="radio"/>
Respiratory Disease	<input type="radio"/>	<input type="radio"/>	<input type="radio"/>	<input type="radio"/>
Sexually Transmitted Diseases	<input type="radio"/>	<input type="radio"/>	<input type="radio"/>	<input type="radio"/>
Stroke	<input type="radio"/>	<input type="radio"/>	<input type="radio"/>	<input type="radio"/>
Suicide	<input type="radio"/>	<input type="radio"/>	<input type="radio"/>	<input type="radio"/>
Trauma	<input type="radio"/>	<input type="radio"/>	<input type="radio"/>	<input type="radio"/>

4. Other health problems in your community not listed above?

---



---



---



---



---



5. In your opinion, what areas need additional education or attention in our community? (Please select all that apply)

Check all that apply.

- ☐ Abuse / Violence
- ☐ Aging (Dementia)
- ☐ Alcohol
- ☐ Alternative Medicine
- ☐ Children's Health
- ☐ Chronic Diseases (example Diabetes or Heart Failure)
- ☐ Drugs/Illegal substances
- ☐ Family Planning / Birth Control
- ☐ Lead Exposure
- ☐ Mental Illness
- ☐ Neglect
- ☐ Nutrition
- ☐ Obesity
- ☐ Ozone / Air Quality
- ☐ Pain Management
- ☐ Poverty
- ☐ Preventative Health
- ☐ Sexually Transmitted Diseases
- ☐ Suicide
- ☐ Teen Health (drinking, abuse, safety, pregnancy)
- ☐ Tobacco Use
- ☐ Uninsured / Underinsured
- ☐ Vaccinations
- ☐ Water Quality
- ☐ Wellness Education
- ☐ Other: \_\_\_\_\_

6. How would you rate each of the following in your community?

Mark only one oval per row.

	Very Good	Good	Fair	Poor	Very Poor	Not aware of the services
Caregiver training programs	<input type="radio"/>	<input type="radio"/>	<input type="radio"/>	<input type="radio"/>	<input type="radio"/>	<input type="radio"/>
Early childhood development programs	<input type="radio"/>	<input type="radio"/>	<input type="radio"/>	<input type="radio"/>	<input type="radio"/>	<input type="radio"/>
Prevention of falls	<input type="radio"/>	<input type="radio"/>	<input type="radio"/>	<input type="radio"/>	<input type="radio"/>	<input type="radio"/>
Obesity prevention and treatment	<input type="radio"/>	<input type="radio"/>	<input type="radio"/>	<input type="radio"/>	<input type="radio"/>	<input type="radio"/>
Spiritual health support	<input type="radio"/>	<input type="radio"/>	<input type="radio"/>	<input type="radio"/>	<input type="radio"/>	<input type="radio"/>
Drug Abuse programs	<input type="radio"/>	<input type="radio"/>	<input type="radio"/>	<input type="radio"/>	<input type="radio"/>	<input type="radio"/>
Reduction of opiate/narcotic use	<input type="radio"/>	<input type="radio"/>	<input type="radio"/>	<input type="radio"/>	<input type="radio"/>	<input type="radio"/>
Alcohol use and treatment programs	<input type="radio"/>	<input type="radio"/>	<input type="radio"/>	<input type="radio"/>	<input type="radio"/>	<input type="radio"/>
Transportation (bus) services in community	<input type="radio"/>	<input type="radio"/>	<input type="radio"/>	<input type="radio"/>	<input type="radio"/>	<input type="radio"/>
Violence prevention	<input type="radio"/>	<input type="radio"/>	<input type="radio"/>	<input type="radio"/>	<input type="radio"/>	<input type="radio"/>

7. How do you feel your local health care providers are doing in addressing the health needs of the following age groups? (Please select one box for each row)

Mark only one oval per row.

	Very Good	Good	Fair	Poor	Very Poor	Not Applicable (NA)
Infants	<input type="radio"/>	<input type="radio"/>	<input type="radio"/>	<input type="radio"/>	<input type="radio"/>	<input type="radio"/>
Age 1 - 12	<input type="radio"/>	<input type="radio"/>	<input type="radio"/>	<input type="radio"/>	<input type="radio"/>	<input type="radio"/>
Age 13 - 17	<input type="radio"/>	<input type="radio"/>	<input type="radio"/>	<input type="radio"/>	<input type="radio"/>	<input type="radio"/>
Age 18 - 25	<input type="radio"/>	<input type="radio"/>	<input type="radio"/>	<input type="radio"/>	<input type="radio"/>	<input type="radio"/>
Age 26 - 44	<input type="radio"/>	<input type="radio"/>	<input type="radio"/>	<input type="radio"/>	<input type="radio"/>	<input type="radio"/>
Age 45 - 64	<input type="radio"/>	<input type="radio"/>	<input type="radio"/>	<input type="radio"/>	<input type="radio"/>	<input type="radio"/>
Age 65 - 84	<input type="radio"/>	<input type="radio"/>	<input type="radio"/>	<input type="radio"/>	<input type="radio"/>	<input type="radio"/>
Over 85	<input type="radio"/>	<input type="radio"/>	<input type="radio"/>	<input type="radio"/>	<input type="radio"/>	<input type="radio"/>

8. How would you rate the following public healthcare services? (Please select one box in each row)

Mark only one oval per row.

	Very Good	Good	Fair	Poor	Very Poor	Not Applicable
Emergency preparedness	<input type="radio"/>	<input type="radio"/>	<input type="radio"/>	<input type="radio"/>	<input type="radio"/>	<input type="radio"/>
Food and nutrition services (WIC programs)	<input type="radio"/>	<input type="radio"/>	<input type="radio"/>	<input type="radio"/>	<input type="radio"/>	<input type="radio"/>
Health screenings	<input type="radio"/>	<input type="radio"/>	<input type="radio"/>	<input type="radio"/>	<input type="radio"/>	<input type="radio"/>
Access to services	<input type="radio"/>	<input type="radio"/>	<input type="radio"/>	<input type="radio"/>	<input type="radio"/>	<input type="radio"/>
Prenatal / child health programs	<input type="radio"/>	<input type="radio"/>	<input type="radio"/>	<input type="radio"/>	<input type="radio"/>	<input type="radio"/>
Sexually transmitted disease testing	<input type="radio"/>	<input type="radio"/>	<input type="radio"/>	<input type="radio"/>	<input type="radio"/>	<input type="radio"/>
Tobacco prevention / cessation programs	<input type="radio"/>	<input type="radio"/>	<input type="radio"/>	<input type="radio"/>	<input type="radio"/>	<input type="radio"/>
Women's wellness programs	<input type="radio"/>	<input type="radio"/>	<input type="radio"/>	<input type="radio"/>	<input type="radio"/>	<input type="radio"/>

9. How would you rate the following healthcare services? (Please select one box in each row)

Mark only one oval per row.

	Very Good	Good	Fair	Poor	Very Poor	Not Applicable (NA)
Ambulance Services	<input type="radio"/>	<input type="radio"/>	<input type="radio"/>	<input type="radio"/>	<input type="radio"/>	<input type="radio"/>
Emergency Room	<input type="radio"/>	<input type="radio"/>	<input type="radio"/>	<input type="radio"/>	<input type="radio"/>	<input type="radio"/>
Family Practice/Medical (clinic) services	<input type="radio"/>	<input type="radio"/>	<input type="radio"/>	<input type="radio"/>	<input type="radio"/>	<input type="radio"/>
Hospital services	<input type="radio"/>	<input type="radio"/>	<input type="radio"/>	<input type="radio"/>	<input type="radio"/>	<input type="radio"/>
Mental Health services	<input type="radio"/>	<input type="radio"/>	<input type="radio"/>	<input type="radio"/>	<input type="radio"/>	<input type="radio"/>
Outpatient services (lab, radiology, etc.)	<input type="radio"/>	<input type="radio"/>	<input type="radio"/>	<input type="radio"/>	<input type="radio"/>	<input type="radio"/>
Specialist Physician care	<input type="radio"/>	<input type="radio"/>	<input type="radio"/>	<input type="radio"/>	<input type="radio"/>	<input type="radio"/>

10. Does our community need any additional healthcare providers?

Mark only one oval.

- ☐ Yes  
☐ No

11. If you feel more providers need to be added, please specify what type is needed:

---

---

---

---

---

12. Are there health care services in your community or neighborhood that you feel need to be improved and or changed? (Please be specific)

---

---

---

---

---

13. Over the past 2 years, did you or someone from your household, receive health care services outside of your county? \*

Mark only one oval.

- ☐ Yes Skip to question 14  
☐ No Skip to question 16

14. Please list the health care services you or your household member(s) have received outside of your county.

---



---



---



---

15. If offered, would you have received the services locally?

Mark only one oval.

- ☐ Yes  
☐ No  
☐ Maybe

**CHANGES TO  
HEALTH  
SERVICES**

Over the last few years, Knoxville Hospital and Clinics and Marion County Public Health have been working to provide ongoing valuable services to the community. Please help us determine the improvements over the last three (3) years.

16. Please rate the following areas for your community.

Mark only one oval per row.

	Not a problem anymore	Somewhat a problem	Still a problem
Care coordination and expanding rural care	<input type="radio"/>	<input type="radio"/>	<input type="radio"/>
Access to mental health services at the hospital	<input type="radio"/>	<input type="radio"/>	<input type="radio"/>
Access to mental health services in the community	<input type="radio"/>	<input type="radio"/>	<input type="radio"/>
Fight obesity (nutrition education and fitness options)	<input type="radio"/>	<input type="radio"/>	<input type="radio"/>
Access to visiting specialist	<input type="radio"/>	<input type="radio"/>	<input type="radio"/>
Transportation for health services	<input type="radio"/>	<input type="radio"/>	<input type="radio"/>
Illegal drug and alcohol use	<input type="radio"/>	<input type="radio"/>	<input type="radio"/>
Opioid / narcotic use	<input type="radio"/>	<input type="radio"/>	<input type="radio"/>
Suicide prevention and support	<input type="radio"/>	<input type="radio"/>	<input type="radio"/>

17. Which health needs are most pressing TODAY and are in need of improvement?

Check all that apply:

- ☐ Wellness options (example healthy lifestyle, food options, exercise, check-ups, screenings)  
☐ Public awareness of healthcare services  
☐ Mental Health / Counseling services  
☐ Public transportation for healthcare  
☐ After hours pharmacy services  
☐ Nutritional education  
☐ Home health / public health  
☐ Hospice  
☐ Dental services  
☐ Obstetrics (family planning and prenatal care) services  
☐ Access to urgent care services  
☐ Healthy eating options  
☐ Cancer services  
☐ Chronic disease prevention (example diabetes or heart failure)  
☐ Elder assistance programs  
☐ Family assistance programs  
☐ Care transitions (movement from one healthcare setting to another or home)  
☐ Children's Health  
☐ Other: \_\_\_\_\_

#### YOUR HEALTH

18. In general, how would you best describe your health? (Please select only one)

Mark only one oval per row.

	Very Good	Good	Fair	Poor	Very Poor
Description of your personal health	<input type="radio"/>	<input type="radio"/>	<input type="radio"/>	<input type="radio"/>	<input type="radio"/>

19. Compared to a year ago, how would you rate your overall health now?

Mark only one oval per row.

	Much better than a year ago	About the same	Much worse than a year ago
Change in health	<input type="radio"/>	<input type="radio"/>	<input type="radio"/>

20. Does your household have a provider you use for primary care (clinic visits)?

Mark only one oval.

- ☐ Yes  
☐ No

21. If yes, please give the physician's name, specialty, and city.

\_\_\_\_\_

22. Have you had a physical in the past 12 months?

Mark only one oval.

- ☐ Yes  
☐ No

23. If you have not had a physical, please provide the specific reason.

---



---



---



---

24. Do you follow these health practices? (Please select one box for each row)

Mark only one oval per row.

	Yes	No	Not Applicable (NA)
Do you get 2.5 hours of moderately intense physical activity each week	<input type="radio"/>	<input type="radio"/>	<input type="radio"/>
If female, do you have a pap smear every other year	<input type="radio"/>	<input type="radio"/>	<input type="radio"/>
If female and over 40, do you have annual mammograms	<input type="radio"/>	<input type="radio"/>	<input type="radio"/>
If male and over 50, do you have an annual prostate exam	<input type="radio"/>	<input type="radio"/>	<input type="radio"/>
If over 50, have you had a colonoscopy	<input type="radio"/>	<input type="radio"/>	<input type="radio"/>

25. Please complete sentence below - "Are you..."

Mark only one oval per row.

	Yes	No	Not Applicable (NA)
Eating right (Daily, balanced plate of protein, fruits, vegetables, grains)	<input type="radio"/>	<input type="radio"/>	<input type="radio"/>
Using tobacco products weekly	<input type="radio"/>	<input type="radio"/>	<input type="radio"/>
Exercising 2-3 times weekly	<input type="radio"/>	<input type="radio"/>	<input type="radio"/>
Consuming alcohol (more than 1 drink daily)	<input type="radio"/>	<input type="radio"/>	<input type="radio"/>
Receiving an annual flu shot	<input type="radio"/>	<input type="radio"/>	<input type="radio"/>
Been without a place to stay for multiple nights (homeless)	<input type="radio"/>	<input type="radio"/>	<input type="radio"/>
Having difficulty with employment due to transportation, education, skills, childcare, scheduling, etc	<input type="radio"/>	<input type="radio"/>	<input type="radio"/>
Vaccinated against COVID-19	<input type="radio"/>	<input type="radio"/>	<input type="radio"/>

## 26. Please mark if you have ever felt...

*Mark only one oval per row.*

	Yes	No
In the last 12 months, did you ever eat less than you felt you should because there wasn't enough money for food?	<input type="radio"/>	<input type="radio"/>
In the last 12 months, has your utility company shut off your service for not paying your bills?	<input type="radio"/>	<input type="radio"/>
Are you worried that in the next 2 months, you may not have housing?	<input type="radio"/>	<input type="radio"/>
Do problems getting child care make it difficult for you to work or study? (leave blank if you do not have children)	<input type="radio"/>	<input type="radio"/>
In the last 12 months, have you needed to see a doctor, but could not because of cost?	<input type="radio"/>	<input type="radio"/>
In the last 12 months, have you ever had to go without health care because you didn't have a way to get there?	<input type="radio"/>	<input type="radio"/>
Do you ever need help reading hospital materials?	<input type="radio"/>	<input type="radio"/>
Are you afraid you might be hurt in your apartment building or house?	<input type="radio"/>	<input type="radio"/>
Missed work (or lost a job) due to unreliable transportation?	<input type="radio"/>	<input type="radio"/>
In the last 12 months, have you taken less medicine than prescribed because there wasn't enough money to buy medication?	<input type="radio"/>	<input type="radio"/>

27. What type of healthcare facility do you use when not feeling well or sick?

Mark only one oval.

- ☐ Clinic/Doctor's office  
☐ Emergency Department  
☐ Urgent-care/Acute Care  
☐ Public Health Department  
☐ Don't seek care/medical treatment  
☐ Other: \_\_\_\_\_

ABOUT YOU

Please provide a bit more information about who you are so we can better serve the community.

28. What is your age?

Mark only one oval.

- ☐ 17 and under  
☐ 18 to 25  
☐ 26 to 44  
☐ 44 to 64  
☐ 65 to 84  
☐ 85 and over

29. Your gender

Mark only one oval.

- ☐ Female  
☐ Male  
☐ Prefer not to say

30. How would you identify yourself?

Mark only one oval.

- ☐ Caucasian / White  
☐ African American / Black  
☐ Latino / Hispanic  
☐ Indian / Native Alaskan  
☐ Asian / Pacific Islander  
☐ Multicultural / Multiracial  
☐ Other: \_\_\_\_\_

31. How would you describe your household? (Please select all that apply)

Check all that apply:

- ☐ Single  
☐ Married  
☐ Parent / Guardian with children at home  
☐ Married with children no longer at home  
☐ Divorced  
☐ Widowed  
☐ Other: \_\_\_\_\_



32. Regarding your health insurance coverage, what type of health coverage is your primary plan? (Choose one)

Mark only one oval.

- ☐ Private insurance you purchased  
☐ Covered by employer (employer pays total cost)  
☐ Partially covered by employer (you and employer share cost)  
☐ Medicare  
☐ Medicaid  
☐ No coverage (uninsured)

33. Where do you get most of your medical information?

Mark only one oval.

- ☐ Doctor  
☐ Internet  
☐ Friend(s)  
☐ Family  
☐ Social media  
☐ Television  
☐ Radio  
☐ Insurance company

34. For reporting purposes, are you involved in or are you a... (Please check all that apply)

Check all that apply.

- ☐ Board member (local health organization)  
☐ Business / Merchant  
☐ Civic club member  
☐ Clergy / Congregational Leader  
☐ College / University student  
☐ Construction / Housing / Builder  
☐ Consumer of healthcare services  
☐ Education official / Teacher  
☐ Economic Development/Government  
☐ Farmer / Rancher  
☐ Health Department  
☐ Healthcare Provider  
☐ Hospital or Clinic employee  
☐ Insurance industry  
☐ Laborer  
☐ Law Enforcement  
☐ Parent / Caregiver  
☐ Student (high school)  
☐ Veteran  
☐ Other: \_\_\_\_\_

35. What is your home 5 digit zip code? \*

\_\_\_\_\_

## Town Hall Meeting Outcomes (Primary Research)

### Top Priorities (votes for top actions)

- Mental Health services - Suicide, teen and adult (15)
- Substance Abuse services (11)
- Chronic Disease (Obesity, Wellness, Smoking, Diet, Exercise) (7)
- Transportation (4)
- Resource Education and Availability Awareness & Access (3)
- Obesity / Chronic Disease (3)
- Teen Health (1)
- Dental Care – access for population (1)
- Abuse (harm and safety) (0)

### Implementation of Priorities in Action Plan – listed prior in report

## CONTACT INFORMATION AND QUESTIONS

### Hospital Contact

Maggie Hamilton-Beyer, Knoxville Hospital and Clinics, CFO

Address: 1002 S. Lincoln Street, Knoxville, IA, 50138; Phone: (641) 842-2151

Kim Dorn, Marion County Public Health, Director

Address: 2003 N Lincoln St, Knoxville, IA 50138; Phone: (641) 828-2238

### Consultant Contact

Sarah Pavelka, Pavelka's Point Consulting, LLC

Phone: 641-780-0180; email: [pavelkaspointconsulting@gmail.com](mailto:pavelkaspointconsulting@gmail.com)

-----End of Report-----