



Marion County IA

Community Health Needs Assessment

Knoxville Hospital & Clinics - Primary Service Area



June 2013

VV Research & Development LLC
Olathe, KS

Community Health Needs Assessment

Table of Contents

I **Executive Summary**

II **Methodology**

- a) CHNA Scope & Purpose
- b) Local Collaborating CHNA parties...the identity of any and all organizations with which the organization collaborated and third parties that engaged to assist with the CHNA.
- c) CHNA & Town Hall Research Process... a description of the process & methods used to conduct the CHNA, a description of how the organization considered the input of persons representing the community, and an explanation of the process/criteria used in prioritizing such needs.
- d) Community Profile (Demographics/Economics)... a description of the community served by the facility and how the community was determined. TABS 1-2

III **Community Health Status**

- a) Town Hall CHNA Findings: Areas of Strengths & Areas to Change and/or Improve.”
- b) County Health Area of Future Focus... a prioritized description of all of the community needs identified by the CHNA.
- c) Historical Health Statistics – TAB 3-10

IV **Inventory of Existing County Health Resources**

- a) Physician Manpower, Health Service Offerings, Detail Inventory of HC providers and Detail Listing local DOH... a description of the existing health care facilities and other resources within the community available to meet the needs identified through the CHNA.

V **Detail Exhibits**

- a) Patient Origin & Access to Care
- b) Town Hall Attendees, Notes & Feedback... who those persons are (with qualifications)
- c) Public Notice & News
- d) Primary Research Detail *Shaded lines note IRS requirements*

I. Executive Summary

[VVV Research & Development INC]

I. Executive Summary

The following report is the Community Health Needs Assessment (CHNA) prepared on behalf of **Knoxville Hospital and Clinics (Primary Service Area) for Marion County, IA.**

Creating healthy communities requires a high level of mutual understanding and collaboration with community individuals and partner groups. The development of this assessment brings together community health leaders and providers, along with local residents, to research, prioritize county health needs and to document community health delivery successes. This health assessment will serve as the foundation for community health improvement efforts for the next three years. The Patient Protection and Affordable Care Act (ACA) require non-profit hospitals to conduct a CHNA every three years and adopt an implementation strategy to meet the needs identified by the CHNA.

Year 2013 CHNA brings together a variety of health status information. This assessment was coordinated and produced by VVV Research & Development INC. from Olathe, Kansas under the direction of Vince Vandelaar, MBA. Important CHNA benefits for the sponsoring local hospital and health department, as well as for the community, are as follows: 1) Increases knowledge of community health needs and resources, 2) Creates a common understanding of the priorities of the community's health needs, 3) Enhances relationships and mutual understanding between and among stakeholders, 4) Provides a basis upon which community stakeholders can make decisions about how they can contribute to improving the health of the community, 5) Provides rationale for current and potential funders to support efforts to improve the health of the community, 6) Creates opportunities for collaboration in delivery of services to the community and 7) Provides guidance to the hospital and local health department for how they can align their services and community benefit programs to best meet needs.

Town Hall Community Health Strengths Cited – Knoxville Hospital & Clinics Primary Service Area (PSA):

Health Delivery Strengths - Marion County (Iowa) N=59	
1	Charity care -covering uninsured
9	Ongoing hospital renovations & up-to-date equipment
2	Farmers market
10	Outpatient school based mental health
3	Free clinic services
11	Preventative services for seniors
4	Good family support services
12	Quality Dental care
5	Good quality doctors
13	Quick access to medical services
6	Having 2 quality hospitals
14	Rec Center activities / outdoor activities
7	Involved community
15	Stable medical staff
8	Life Flight services
16	Visibility of health care providers

CHNA "Health Priorities" Cited - Knoxville Hospital & Clinics Primary Service Area (PSA):

Marion County IA on behalf of Knoxville Hospital & Clinics Town Hall Community Health Needs Priorities N = 59				
#	HC Topics cited to either change or improve	Votes	%	Accum
Total Town Hall Votes		199	199%	
1	Improve Mental Health Care (providers, placement, transportation, beds, education)	30	15.1%	15.1%
2	Increase Wellness Education (programs and screenings)	26	13.1%	28.1%
3	Build Walking Trails and Sidewalks	19	9.5%	37.7%
4	Increase Preventive Care services	17	8.5%	46.2%
5	Increase Substance Abuse (treatment & prevention)	16	8.0%	54.3%
6	Build "Health" Community Perception/Awareness	14	7.0%	61.3%
7	Improve Family planning education (in high school – birth control)	13	6.5%	67.8%
8	Expand Specialist services (G.I., Ortho, etc.)	13	6.5%	74.4%
9	Fight Cancer	12	6.0%	80.4%
10	Expand/Build Adult Day Care	7	3.5%	83.9%
Note:	Other items receiving votes: Economic Development, Coordination of Care among providers, Urgent Care, Uninsured Dental Care, Weekend Hospital service, Expand Medicaid, ER providers, Mammography and Occ Med.			

Key Community Health Needs Assessment Conclusions (Secondary Research)

IA HEALTH RANKINGS: According to the 2013 RWJ County Health Rankings study, Marion County's highest State of Iowa ranking (of 99 counties) was in Social and Economic Factors - Education, Employment, Income, Family/Social Support, Community Safety (20th). Marion's lowest ranking was Physical Environment – Environmental Quality (71st).

- TAB 1: Marion County's population remains steady with a 2% increase from 2000-2009. Marion County's median household income is \$53,700 higher than state comparison norms and other Critical Access Hospital (CAH) counties. Similarly, Marion also has a lower percentage of children living the below the poverty level (11%) and children in single parent households (18%).
- TAB 2: Marion County has an unemployment rate of 6.3%, slightly higher than the state norm and other CAH counties. The percentage change of private non-farm employment has decreased -16.5% from 2000-2010.
- TAB 3: In Marion County 30.7% of students are eligible for free or reduced lunch. The county maintains a 94% high school graduation rate.

- TAB 4: Marion County's percentage of births with low birth weight (6.1%) and the percentage of births where prenatal care began in the first trimester are both on par the state and other CAH norms (88.4%).
- TAB 5: Total hospital inpatient discharges in Marion County have remained steady over past 3 years as have the total hospital inpatient discharges for Knoxville Hospital specifically.
- TAB 6: The dollars spent on mental health services have increased from \$1,649,091 to \$2,142,201 from 2010-2012.
- TAB 7: Adult obesity is on par with the state average (32%) as are the percentages of physical inactivity (25%) and adult smoking (20%).
- TAB 8: Marion County has a rate of uninsured lower than the state norm (8.8%).
- TAB 9: Cancer, heart disease and Alzheimer's disease are the major causes of mortality for Marion County.
- TAB 10: The percentage of adolescent immunization (20%) is lower than state norms. Diabetic (86%) and mammography (75%) screenings are on par with norms.

II. Methodology

[VVV Research & Development INC]

II. Methodology

a. CHNA Scope and Purpose

The new federal Patient Protection and Affordable Care Act requires that each registered 501(c)3 hospital conduct a Community Health Needs Assessment (CHNA) at least once every three years and adopt a strategy to meet community health needs. Any hospital who has filed a 990 is required to conduct a CHNA. IRS Notice 2011-52 was released in late fall of 2011 to give notice and request comments.

JOB #1: Meet/Report IRS 990 Required Documentation

1. a description of the community served by the facility and how the community was determined;
2. a description of the process and methods used to conduct the CHNA;
3. the identity of any and all organizations with which the organization collaborated and third parties that it engaged to assist with the CHNA;
4. a description of how the organization considered the input of persons representing the community (*e.g., through meetings, focus groups, interviews, etc.*), who those persons are, and their qualifications;
5. a prioritized description of all of the community needs identified by the CHNA and an explanation of the process and criteria used in prioritizing such needs; and
6. a description of the existing health care facilities and other resources within the community available to meet the needs identified through the CHNA.

Section 501(r) provides that a CHNA must take into account input from persons who represent the broad interests of the community served by the hospital facility, including individuals with special knowledge of or expertise in public health. Under the Notice, the persons consulted must also include: Government agencies with current information relevant to the health needs of the community and representatives or members in the community that are medically underserved, low-income, minority populations, and populations with chronic disease needs. In addition, a hospital organization may seek input from other individuals and organizations located in or serving the hospital facility's defined community (e.g., health care consumer advocates, academic experts, private businesses, health insurance and managed care organizations, etc.).

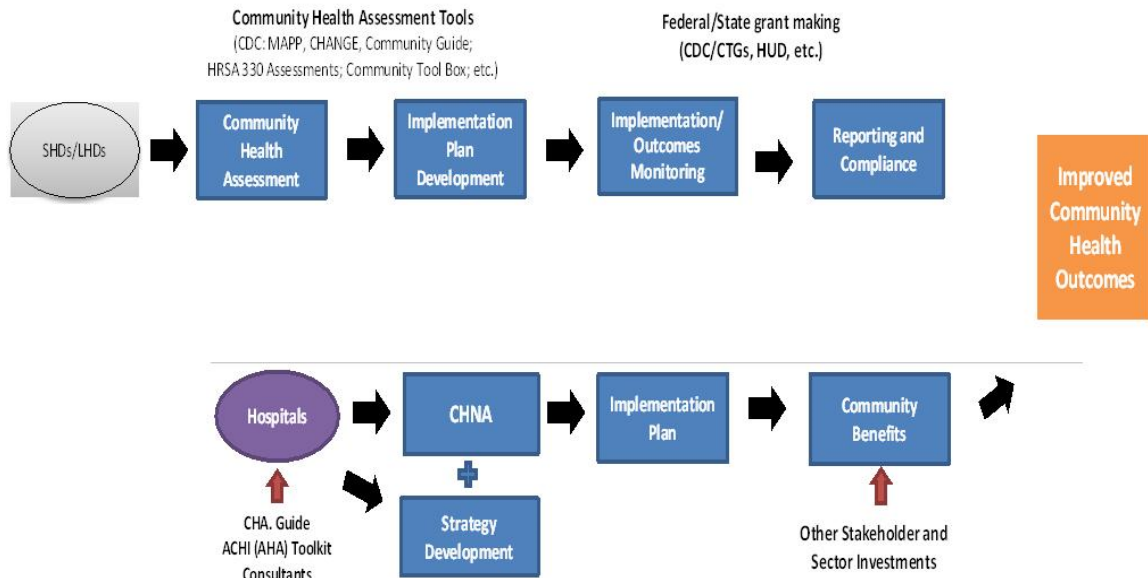
JOB #2: Making a CHNA Widely Available to the Public

The Notice provides that a CHNA will be considered to be "conducted" in the taxable year that the written report of the CHNA findings is made widely available to the public. The Notice also indicates that the IRS intends to pattern its rules for **making a CHNA "widely available to the public"** after the rules currently in effect for Form 990. Accordingly, an organization would make a **facility's written report** widely available by posting the final report on its website either in the form of (1) the report itself, in a readily accessible format, or (2) a link to another organization's website, along with instructions for accessing the report on that website. *The Notice clarifies that an organization must post the CHNA for each facility until the date on which its subsequent CHNA for that facility is posted.*

JOB #3: Adopt an Implementation Strategy by Hospital

Section 501(r) requires a hospital organization to adopt an implementation strategy to meet the needs identified through each CHNA. The Notice defines an “implementation strategy” as a written plan that addresses each of the needs identified in a CHNA by either (1) describing how the facility plans to meet the health need, or (2) identifying the health need as one that the facility does not intend to meet and explaining why the facility does not intend to meet it. A hospital organization may develop an implementation strategy in collaboration with other organizations, which must be identified in the implementation strategy. As with the CHNA, a hospital organization that operates multiple hospital facilities must have a separate written implementation strategy for each of its facilities.

Great emphasis has been given to work hand-in-hand with leaders from both hospitals and the local county health department. A common approach has been adopted to create the CHNA, leading to aligned implementation plans and community reporting.



IRS Notice 2011-52 Overview

Applicability of CHNA Requirements to “Hospital Organizations”

The CHNA requirements apply to “**hospital organizations**,” which are defined in Section 501(r) to include (1) organizations that operate one or more state-licensed hospital facilities, and (2) any other organization that the Treasury Secretary determines is providing hospital care as its principal function or basis for exemption.

Under Section 501(r), a hospital organization is required to conduct a CHNA for each of its hospital facilities once every three taxable years. *The CHNA must take into account input from persons representing the community served by the hospital facility and must be made widely available to the public.* **The CHNA requirements are effective for taxable years beginning after March 23, 2012.** As a result, a hospital organization with a June 30 fiscal year end must conduct an initial CHNA for each of its hospital facilities by June 30, 2013, either during the fiscal year ending June 30, 2013 or during either of the two previous fiscal years.

Determining the Community Served

A CHNA must identify and assess the health needs of the **community served** by the hospital facility. Although the Notice suggests that geographic location should be the primary basis for defining the community served, it provides that the organization may also take into account the target populations served by the facility (e.g., children, women, or the aged) and/or the facility’s principal functions (e.g., specialty area or targeted disease). *A hospital organization, however, will not be permitted to define the community served in a way that would effectively circumvent the CHNA requirements (e.g., by excluding medically underserved populations, low-income persons, minority groups, or those with chronic disease needs).*

Persons Representing the Community Served

Section 501(r) provides that a CHNA must take into account input from **persons who represent the broad interests of the community** served by the hospital facility, including individuals with special knowledge of or expertise in public health. Under the Notice, the persons consulted must also include: (1) government agencies with current information relevant to the health needs of the community and (2) representatives or members of medically underserved, low-income, and minority populations, and populations with chronic disease needs, in the community. In addition, a hospital organization may seek input from other individuals and organizations located in or serving the hospital facility’s defined community (e.g., health care consumer advocates, academic experts, private businesses, health insurance and managed care organizations, etc.).

Required Documentation The Notice provides that a hospital organization will be required to separately document the CHNA for each of its hospital facilities in a **written report** that includes the following information: 1) a description of the community served by the facility and how the community was determined; 2) a description of the process and methods used to conduct the CHNA; 3) the identity of any and all organizations with which the organization collaborated and third parties that it engaged to assist with the CHNA; 4) a description of how the organization considered the input of persons representing the community (e.g., through meetings, focus groups, interviews, etc.), who those persons are, and their qualifications; 5) a prioritized description of all of the community needs identified by the CHNA and an explanation of the process and criteria used in prioritizing such needs; and 6) a description of the existing health care facilities and other resources within the community available to meet the needs identified through the CHNA.

Making a CHNA Widely Available to the Public

The Notice provides that a CHNA will be considered to be “**conducted**” in the taxable year that the written report of the CHNA findings is made **widely available to the public**. The Notice also indicates that the IRS intends to pattern its rules for making a CHNA “widely available to the public” after the rules currently in effect for Forms 990. *Accordingly, an organization would make a facility’s written report widely available by posting on its website either (1) the report itself, in a readily accessible format, or (2) a link to another organization’s website, along with instructions for accessing the report on that website. The Notice clarifies that an organization must post the CHNA for each facility until the date on which its subsequent CHNA for that facility is posted.*

How and When to Adopt an Implementation Strategy

Section 501(r) requires a hospital organization to adopt an implementation strategy to meet the needs identified through each CHNA. **The Notice defines an “implementation strategy” as a written plan that addresses each of the needs identified in a CHNA by either (1) describing how the facility plans to meet the health need, or (2) identifying the health need as one that the facility does not intend to meet and explaining why the facility does not intend to meet it.** A hospital organization may develop an implementation strategy in collaboration with other organizations, which must be identified in the implementation strategy. As with the CHNA, a hospital organization that operates multiple hospital facilities must have a separate written implementation strategy for each of its facilities.

Under the Notice, an implementation strategy is considered to be “**adopted**” on the date the strategy is approved by the organization’s board of directors or by a committee of the board or other parties legally authorized by the board to act on its behalf. Further, the formal adoption of the implementation strategy must occur by the end of the same taxable year in which the written report of the CHNA findings was made available to the public. For hospital organizations with a June 30 fiscal year end, that effectively means that the organization must complete and appropriately post its first CHNA no later than its fiscal year ending June 30, 2013, and formally adopt a related implementation strategy by the end of the same tax year. *This final requirement may come as a surprise to many charitable hospitals, considering Section 501(r) contains no deadline for the adoption of the implementation strategy.*

II Methodology

b) Collaborating CHNA parties

Working together to improve community health takes collaboration. Listed below is an in depth profile of the local hospitals & Health Department CHNA partners:

Knoxville Hospital & Clinics

1002 South Lincoln Street

Knoxville, Iowa 50138

641-842-2151

Kevin Kincaid, CEO

Knoxville Hospital & Clinics (KHC) is a critical access hospital serving Marion County and the surrounding areas. KHC is dedicated to providing personal, progressive, quality healthcare with compassion. In addition to various departments providing general healthcare services, KHC also offers a large variety of outpatient clinics staffed by qualified specialty physicians.

MISSION

Through our caring compassion, and with a healing spirit, we provide exceptional healthcare services.

VISION

Knoxville Hospital & Clinics is the premier healthcare facility in south central Iowa because we successfully meet the needs and exceed the expectations of those we serve.

Medical Services

Emergency Department

Surgical Services

Diagnostic Services

Outpatient Services

Occupational Health

Maternity/Midwifery Services

Skilled Patient Care

Clinic Services:

- Allergist/Sleep Disorders
- Iowa Heart Center
- Dermatology & Dermatologic Surgical Center
- Diabetic Education
- Ears, Nose and Throat
- General Surgery
- Nerve Conduction
- OB/GYN
- Oncology/Hematology
- Orthopedics
- Podiatry
- Psychologist
- Pulmonology
- Speech Therapy
- Urology
- Vascular Surgery

Marion County, Iowa - Public Health

2003 North Lincoln

Knoxville Iowa 50138

Kim Dorn, Department Head

Hours: Monday – Friday 8:00 A.M - 4:30 P.M.

Marion County Public Health Department believes Public Health is an integral component of the health care system, using the core functions and essential services of Public Health and the art and science of nursing, education, and other public health related disciplines to promote, preserve, and restore the health of individuals and the community. The public health professional maintains, promotes, and restores health through caring, coordinating, educating, and collaborating interdependently with community partners.

Services

Care for Yourself

The Care for Yourself program helps eligible women receive:

- Annual Office Visit
- Mammogram
- Pap Test
- Annual Cholesterol Screening
- Annual Blood Glucose Screening
- Blood Pressure Screenings

Child Care Nurse Consultant

A Child Care Nurse Consultant provides guidance and technical assistance to child care providers regarding the health and safety of children in their care.

- Preventing infectious diseases
- Preventing injuries
 - Promoting health through:
 - Written policies
 - Food safety practices
 - Sanitation practices
 - Play equipment assessments
 - Healthy record reviews
 - Illness and injury records
 - Education of staff and families

Community Transformation

- Tobacco Free Living
- Healthy Eating

- Active Living
- Clinical Preventive Services
- Safe and Healthy Environment

Elderly Waiver Emergency Response

Environmental Health

- Permitting and inspection private septic systems
- Well testing and well filling in the county
- Health complaints

Hawk-i

Health care coverage for uninsured children under the age of 19.

Homemaker

The Homemaker program of Marion County provides care to individuals who need assistance in their homes.

Immunizations

I-Smile

Lead Poisoning Prevention

Maternal and Child Health

Parents as Teachers

- Home Visits
- Developmental screens for baby
Information regarding baby's health & development
- In-home Support
- Parent education opportunities
- Referrals to other programs
- Personalized baby calendar

- Diapers at no cost

Preschool Tuition Assistance

Public Health Nursing

- Chronic Care home visits
- Homemaker services
- Frail Elderly Case Management
- Foot Care Clinics
- Blood Pressure screening clinics
- Immunizations– Child/Adult
- Public Health/Disaster Preparedness

- Community Health Planning
- Community Education
- CPR & First Aid Training
- Targeted Case Management
- Resource and Referral Information
- Communicable Disease Follow-up

Tobacco Free Coalition

WIC

II. Methodology

b. Collaborating CHNA Parties (continue)

Consultant Qualifications



VVW Research & Development, Inc.

Company Profile: 601 N. Mahaffie, Olathe, KS 66061-6431 (913) 302-7264

VINCE VANDEHAAR, MBA

Principal Consultant & Owner of VVW Research & Development, Inc.

VVW Research & Development, Inc. was incorporated on May 28th 2009. With over 30 years of business & faculty experience in helping both providers, payors, and financial service firms obtain their strategic planning, research & development needs, Vince brings in-depth health industry knowledge, research aptitude, planning expertise, and energy. VVW Research & Development services are organized, formal processes of listening to the voice of the customer. Vince started his consulting business in May of 2009, after working for Saint Luke's Health System (SLHS) of Kansas City for 16 years. Note: Saint Luke's Hospital of Kansas City, SLHS's largest hospital, won the Malcolm Baldrige National Quality Award in March of 2003. The Baldrige examiners cited Vince's department as "Best Practice" in the areas of customer satisfaction, market research, and evaluation efforts (Kansas City Star 3/10/04).

VVW Research & Development, INC. (Olathe, KS) consultants have in-depth experience helping hospitals work with local Health Departments to engage community residents & leaders to identify gaps between existing health community resources & needs, and construct detailed strategies to meet those needs - while still adhering to the hospital's mission and budget. Over the past 20 years, Vandehaar has completed 8 comprehensive Baldrige aligned Community Health Needs Assessments for Saint Luke's of Kansas City System facilities (3 campuses) and was contracted to conduct 2 additional independent Dept. of Health consulting projects (prior to IRS 990 regs). Currently in 2012, VVW has 12 CHNA IRS aligned assessments underway for Kansas hospitals & Health Departments.

Vince Vandehaar, MBA is actively involved in the Kansas City community. He is a member the Greater Kansas City Employee Benefits Association, the Society for Healthcare Strategy & Market Development, the American Marketing Association Kansas City Chapter, and Co-Chair of the AMA Kansas City Healthcare Special Interest Group. In addition to these roles, from 2000 to 2008, Vince served as the state chairman for MHA's Data Committee and was a member of KHA's Data Taskforce.

Collaborating Consultants

Amanda Burian - VVW Research & Development, Inc.
Lead Project Coordinator & Planning Analyst

II. Methodology

c. CHNA & Town Hall Research Process

Knoxville Hospital & Clinics' (KH&C) Community Health Needs Assessment process began in January of 2013. At that time an inquiry was made by Jim Fitzpatrick, SVP Mercy Health Network Central Iowa to VVV Research & Development to explore the possibility of conducting a comprehensive IRS aligned CHNA for hospital members. On February 15th of 2013 a meeting was held to learn more about Mercy Network Central CHNA's collaborative options. On that date VVV Research & Development INC reviewed: VVV Research & Development CHNA experience, CHNA requirements (in-depth regulations), CHNA development steps / options to meet IRS requirements, and next steps after option approval. After this review, Knoxville Hospital & Clinics elected to move forward with VVV CHNA support.

VVV CHNA Deliverables:

- Confirm Knoxville Hospital & Clinics service area meets 75/25 % patient origin rule,
- Uncover/Document Basic Secondary Research – Health of County. Organized by 10 TABS,
- Conduct Town Hall Meeting to discuss secondary data and uncover/prioritize county health needs,
- Report CHNA primary Research (with valid N), and
- Prepare and publish IRS-aligned CHNA report to meet requirements.

(NOTE: To ensure proper (75/25%) Town Hall representation, the following patient origin 3 years summary was generated. For KH&C, all of Marion County resident's views need to be collected and reported to determine primary service area (PSA) health needs.)

Knoxville Hospital Patient Origin - 3 year				a	b	c	Inpatients			ER			OP proc		
#	Zips	City	County	Accum	3YR %	3 year total	2009	2010	2011	2009	2010	2011	2009	2010	2011
1	50138	KNOXVILLE	Marion	77.6%	77.6%	106,130	401	496	452	3,498	3,382	3,341	31,419	30,793	30,395
2	50225	PLEASANTVILLE	Marion	85.3%	7.7%	10,480	41	30	32	411	368	369	3,023	2,768	3,248
3	50163	MELCHER	Marion	90.2%	4.9%	6,716	35	27	36	249	159	202	2,159	1,464	2,264
4	50062	DALLAS	Marion	92.7%	2.5%	3,441	21	27	9	109	99	89	1,207	956	875
5	50044	BUSSEY	Marion	94.8%	2.2%	2,943	8	11	6	148	101	85	1,015	733	790
6	50057	COLUMBIA	Marion	95.8%	1.0%	1,333	9	5	4	75	43	33	572	310	263
7	50119	HARVEY	Marion	96.7%	0.8%	1,151	8	8	8	48	58	70	0	412	507
8	50256	TRACY	Marion	97.4%	0.8%	1,032	8	6	5	37	34	35	270	301	321
9	50219	PELLA	Marion	98.2%	0.7%	1,008	11	17	11	27	30	44	226	289	324
10	50116	HAMILTON	Marion	98.7%	0.5%	749	4	3	4	25	30	27	208	199	234

The following chart (calendar of events) outlines approved Davis County Hospital's CHNA roles & responsibilities:

Knoxville Hospital & Clinics IA - CHNA Work Plan			
Project Timeline & Roles 2013 as of 2/14/13			
Step	Date (Start-Finish)	LEAD	Task
1	Dec 2012	VV	Sent CHNA Overview material outlining options to CEO.
2	2/5/2013	VV KH&C	Conducted overview CHNA conference call - Heffron and Hamilton-Beyer
3	2/12/2013	KH&C	Approval VV CHNA project quote basic plus - Email message from Maggie Hamilton-Beyer
4	2/14/2013	VV	Prepare Draft Paper/online CHNA survey. VV draft sent for review Request FFY 11, 10 and 09 IHA patient origin data reports to document service area.
5	2/14/2013	VV	Send out REQCoimmInvite Excel file plus SchoolHealthdata Excel file for KH&C input.
6		VV KH&C	CHNA Overview Conf call with KH&C/Public Health leaders.
7		VV / KH&C	Prepare/send out PR story to local media announcing upcoming CHNA work (general story)
8		VV / KH&C	Prepare/send out PR story to local media Requesting CHNA survey participation
9	3/7/13 - 3/29/13	VV	FIELD WORK Mail CHNA Primary Research (Paper survey with online link) to PSA residents. Send 1000 per PSA want 250 returns DUE DATE TUES 3/26
10		KH&C	Prepare/send out Community TOWN HALL invite letter. (Use Hosp PSA Required data file - joint signature (2). Use VV letter sample format.)
11		VV / KH&C	Conduct CHNA conference call. Review Town Hall Secondary Research data (10 TABS) + Town Hall ppt.
12	THUR 4/11 ?	VV	Conduct CHNA Town Hall. Time TBD, Conf Room) Review Basic plus CHNA info and uncover community needs.
13	on or before 5/15/2013	VV	Complete Analysis - Release Draft 1- seek feedback from County Leaders (Hospital & Health Dept.)
14	on or before 5/31/2013	VV	Produce & Release final CHNA report. Post CHNA online.
15	after 6/1 - Due 6/30/13	KH&C	Hold Board Meetings discuss CHNA needs, create & adopt an implementation plan/strategy and communicate CHNA plan to community.

To meet IRS aligned CHNA requirements, a four-phase methodology was reviewed and approved as follows:

Phase I – Discovery: Conduct a 30 minute conference call with CHNA hospital client and County Health Department. Review / confirm CHNA calendar of events, explain / coach client to complete required participants database and schedule / organize all Phase II activities.

Phase II – QUALIFY Community Need:

A) Conduct secondary research to uncover the following historical community health status for PSA. Use Iowa Hospital Association (IHA), Vital Statistics, Robert Woods Johnson County Health Rankings, etc. to document “current state” of county health organized as follows:

TAB 1. Demographic Profile
TAB 2. Economic/Business Profile
TAB 3. Educational Profile
TAB 4. Maternal and Infant Health Profile
TAB 5. Hospitalization / Providers Profile
TAB 6. Behavioral Health Profile
TAB 7. Risk Indicators & Factors
TAB 8. Uninsured Profile
TAB 9. Mortality Profile
TAB 10. Preventative Quality Measures

B) Gather historical primary research to uncover public health needs, practices and perceptions for hospital primary service areas.

Phase III – QUANTIFY Community Need: Conduct 90 minute Town Hall meeting with required county PSA residents. (Note: At each Town Hall meeting, CHNA secondary data will be reviewed, facilitated group discussion will occur, and a group ranking activity to determine the most important community health needs will be administered.

Phase IV - Complete data analysis & create comprehensive Community Health Needs Assessment. Post CHNA report findings to meet IRS CHNA criteria.

After consideration of CHNA stakeholders (sponsoring hospital & local health department) the CHNA Basic option was selected with the following project schedule:

Phase I: Discovery.....	December 2012
Phase II: Secondary Research	Jan-Feb 2013
Phase III: Town Hall Meeting.....	April 11, 2013
Phase IV: Prepare / Release CHNA report.....	May-June 2013

Detail CHNA development steps include:

	Suggested Development Steps
Step # 1 Commitment	<i>Determine interest level of area healthcare leaders (Hospital, Health Dept, Schools, Churches, Physicians etc), hold community meeting.</i>
Step # 2 Planning	<i>Prepare brief Community Health Needs Assessment Plan - list goals, objectives, purpose, outcome, roles, community involvement, etc. Hold Community Kick-off meeting.</i>
Step # 3 Secondary Research	<i>Collect & Report Community Health Published Facts. Gather data health practice data from published secondary research sources i.e. census, county health records, behavioral risk factors surveillance, etc.</i>
Step # 4a Primary Research	<i>Conduct Community Roundtable (Qualitative Research). Review Secondary Research (Step3) with Community Stakeholders. Gather current opinions and identify health needs.</i>
Step # 4b Primary Research <Optional>	<i>Collect Community Opinions. (Quantitative Research). Gather current opinions (Valid sample size) regarding community health needs and healthcare practices. If appropriate, conduct Physician Manpower Assessment to determine FTE Physician need by specialty.</i>
Steps # 5 Reporting	<i>Prepare/Present comprehensive Community Health Needs Assessment report (to community leaders) with Recommended Actions to improve health. < Note: Formal report will follow IRS Notice 2011-52 regs ></i>
	VVV Research & Development INC 913 302-7264

Overview of Town Hall Community Priority Setting Process

Each community has a wealth of expertise to be tapped for CHNA development. For this reason, a town hall is the perfect forum to gather community insight and provide an atmosphere to objectively consensus build and prioritize county health issues.

All Town Hall priority-setting and scoring processes involve the input of key stakeholders in attendance. Individuals and organizations attending the Town Halls were critically important to the success of the CHNA. The following list outlines partners invited to Town Hall: local hospital, public health community, mental health community, free clinics, community-based clinics, service providers, local residents, community leaders, opinion leaders, school leaders, business leaders, local government, faith-based organizations and persons (or organizations serving them), people with chronic conditions, uninsured community members, low income residents, and minority groups.

Knoxville Hospital & Clinics Town Hall was held over dinner on Thursday April 11th, 2013, at the Knoxville High School. Vince Vandehaar and Lyndsey Ogle facilitated this 1 ½ hour session with fifty nine (59) attendees. (Note: a detail roster of Town Hall attendees is listed in Section V a.)

The following Town Hall agenda was conducted:

1. Welcome & Introductions
2. Review purpose for the CHNA Town Hall and roles in the process
3. Present / Review of historical County Health Indicators (10 TABS)
4. Facilitate Town Hall participant discussion of data (probe health strengths / concerns). Reflect on size and seriousness of any health concerns cited and discuss current community health strengths.
5. Engage Town Hall participants to rank health needs (using 4 dots to cast votes on priority issues). Tally & rank top community health concerns cited.
6. Close meeting by reflecting on the health needs / community voting results. Inform participants on "next steps".

At the end of each Town Hall session, VVW encouraged all community members to continue to contribute ideas to both hospital and health department leaders via email or personal conversations.

< NOTE: To review detail Town Hall discussion content, please turn to Section V for detail notes of session and activity card content reporting of open end comments.>

Community Health Needs Assessment Marion County IA Town Hall Meeting on behalf of Knoxville Hospital & Clinics

Vince Vandehaar, MBA
VVV Marketing & Development INC.
Owner and Adjunct Marketing Professor

Olathe, Kansas 66061
vmlvandehaar@aol.com

www.vandehaarmarketing.com
913-302-7264

Community Health Needs Assessment (CHNA) Town Hall Discussion Agenda

- I. Opening / Introductions (10 mins)
- II. Review CHNA Purpose & Process (10 mins)
- III. Review Current County "Health Status" --
Secondary Data by 10 TAB Categories
Review Primary Research Results (35 mins)
- IV. Collect Community Health Perspectives Hold
Community Voting Activity: Determine MOST Important Health
areas. (30 mins)
- V. Close / Next Steps (5 mins)

VVV Marketing & Development INC.

I. Introduction:

Background and Experience



Vince Vandehaar MBA, VVV Marketing & Development INC
Principal Consultant, Olathe, KS 913 302-7264

- > – Professional Consulting Services: Strategic Planning, Marketing Management, Business Research & Development Focus : Strategy , Research , Deployment
 - > – Over 25 years of experience with Tillinghast, BCBSKC, Saint Luke's
- Adjunct Professor - Marketing / Health Admin.- 24 years +**
- > Webster University (1988 – present)
 - > Rockhurst University (2010 – present)

□ **Lyndsey Ogle MA, Planning Analyst**

Town Hall Participation (You)

- ALL attendees welcome to share.
 - Parking Lot
- There are no right or wrong answers.
- Only one person speaks at a time.
- Please give truthful responses.
- Have a little fun along the way.

I. Introductions: a conversation with the community. Community members and organizations invited to CHNA Town Hall

Consumers: Uninsured/underinsured people, Members of at-risk populations, Parents, caregivers and other consumers of health care in the community, and Consumer advocates.

Community leaders and groups: The hospital organization's board members, Local clergy and congregational leaders, Presidents or chairs of civic or service clubs - Chamber of Commerce, veterans' organizations, Lions, Rotary, etc., Representatives from businesses - owners/CEO's of large businesses (local or large corporations with local branches), Business people & merchants (e.g., who sell tobacco, alcohol, or other drugs), Representatives from organized labor, Political, appointed and elected officials, Foundations, United Way organizations. And other "community leaders."

Public and other organizations: Public health officials, Directors or staff of health and human service organizations, City/Community planners and development officials, Individuals with business and economic development experience, Welfare and social service agency staff, Housing advocates - administrators of housing programs: homeless shelters, low-income-family housing and senior housing, Education officials and staff - school superintendents, principals and teachers, Public safety officials, Staff from state and area agencies on aging, Law enforcement agencies - Chiefs of police, Local colleges and universities, Coalitions working on health or other issues.

Other providers: Physicians, Leaders in other not-for-profit health care organizations, such as hospitals, clinics, nursing homes and home-based and community-based services, Leaders from Catholic Charities and other faith-based service providers, Mental health providers, Oral health providers, Health insurers, Parish and congregational nursing programs, Other health professionals

II. Purpose: Why conduct Community Health Needs Assessment?

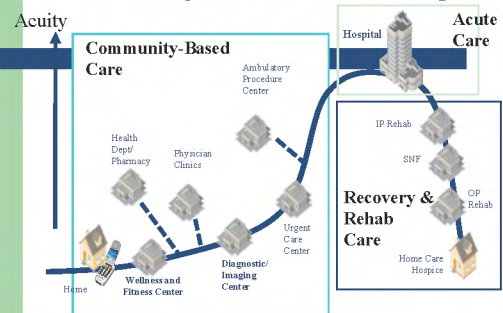
- To determine health-related trends and issues of the community.
- To understand/evaluate health delivery programs in place.
- To develop strategies to address unmet health needs.
- To meet Federal requirements - both local hospital & Health Department.

II. Review CHNA Definition

A Community Health Needs Assessment (CHNA) is a systematic collection, assembly, analysis, and dissemination of information about the health of the community. **<NOTE: Some the data has already been collected (published) by local, state and federal public health organizations. Some data will be collected today.>**

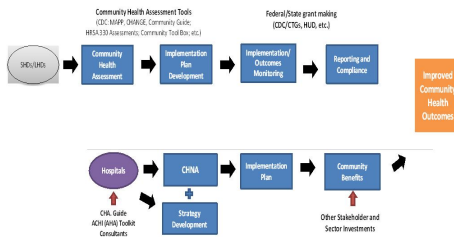
CHNA's role is to identify factors that affect the health of a population and determine the availability of resources to adequately address those factors.

Future System of CARE Sg2



IP = inpatient, SNF = skilled nursing facility, OP = outpatient

Community Health Needs Assessment Joint Process: Hospital & Health Department



II. Required Written Report IRS 990 Documentation

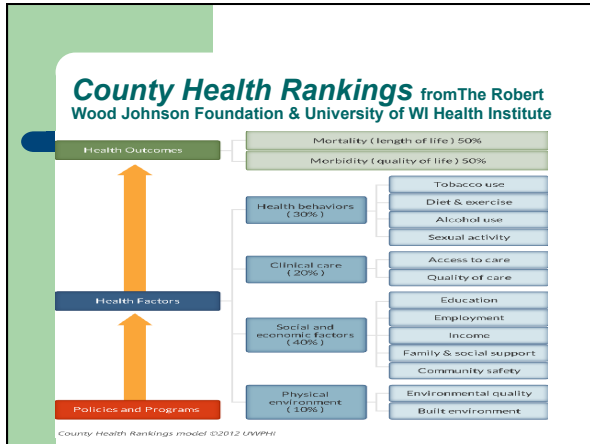
- a **description of the community served**
- a **description of the CHNA process**
- the **identity of any and all organizations & third parties** which collaborated to assist with the CHNA;
- a **description of how** the organization considered the input of persons representing the community (*e.g., through meetings, focus groups, interviews, etc.*), who those persons are, and their qualifications;
- a **prioritized description of all of the community needs identified by the CHNA and**
- a **description of the existing health care facilities and other resources within the community** available to meet the needs identified through the CHNA.

III. Review Current County "Health Status" – Secondary Data by 10 TAB Categories plus IA State Rankings

TAB 1. Demographic Profile
TAB 2. Economic/Business Profile
TAB 3. Educational Profile
TAB 4. Maternal and Infant Health Profile
TAB 5. Hospitalization / Providers Profile
TAB 6. Behavioral Health Profile
TAB 7. Risk Indicators & Factors
TAB 8. Uninsured Profile
TAB 9. Mortality Profile
TAB 10. Preventative Quality Measures

Source Files for Iowa CHNA secondary data:

- Robert Woods Johnson County Health Rankings and Roadmaps (www.countyhealthrankings.org/iowa)
- U.S. Census Quick Facts (<http://quickfacts.census.gov>)
- Iowa County Health Snapshots (<http://www.idph.state.ia.us/DWH/Snapshots.aspx>)
- 2011 Iowa Health Fact Book (PDF)
- Kids Count Data (<http://datacenter.kidscount.org/data/bystate/StateLanding.aspx?state=IA>)
- Diabetes and Obesity Data (<http://diabetes-obesity.findthedata.org/>)
- Vital Statistics: Maternal and Infant Health Profile, 2010 (PDF)
- Iowa DOH Immunization Annual Report 2011 (PDF)
- Division of Mental Health and Disability Services (MHDS) County Service Data (http://www.dhs.state.ia.us/mhdd/statistical_info/county_dataservices.html)



IV. Collect Community Health Perspectives
Ask your opinion. Your thoughts?

- 1) Today: What are the *strengths* of our community that contribute to health
- 2) Today: Are there healthcare services in your community / neighborhood that you feel need to be improved and / or changed?
- 3) Tomorrow: What is occurring or might occur that affects the health of our community?

V. Have we forgotten anything ?

a. Aging Services	m. Hospice
b. Chronic Pain Management	n. Hospital Services
c. Dental Care/Oral Health	o. Maternal, Infant & Child Health
d. Developmental Disabilities	p. Nutrition
e. Domestic Violence,	r. Pharmacy Services
f. Early Detection & Screening	s. Primary Health Care
g. Environmental Health	t. Public Health
h. Exercise	u. School Health
i. Family Planning	v. Social Services
j. Food Safety	w. Specialty Medical Care Clinics
k. Health Care Coverage	x. Substance Abuse
l. Health Education	y. Transportation
m. Home Health	z. Other _____

Community Health Needs Assessment

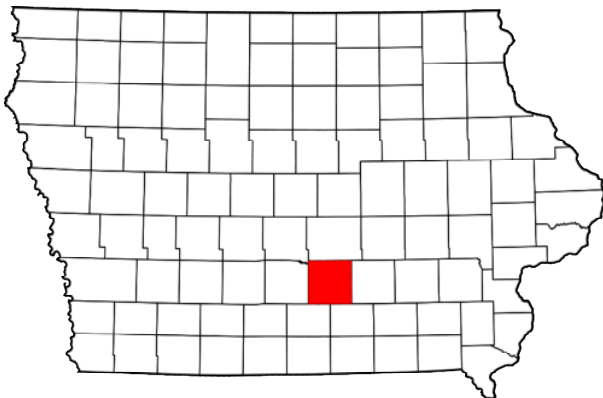
Questions Next Steps ?

VVV Research & Development INC.
 vmlvandehaar@aol.com
 913 302-7264

II. Methodology

d. Community Profile (a description of community served)

Marion County, IA Community Profile



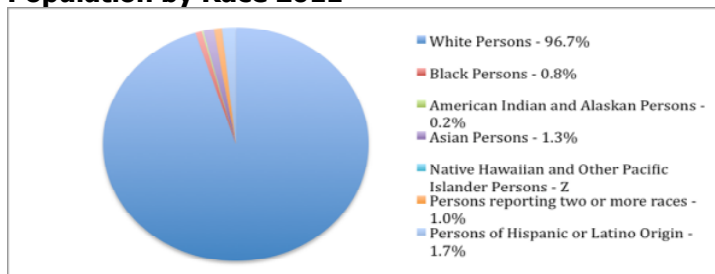
Demographics

The population of Marion County was estimated to be 33,335 in 2011, and had a 0.03% change in population from 2010–2011.¹

The county covers 554.53 square miles and this area is home to Pella Opera House, Cox-Snow Recital Hall, Joan Kuper Farver Auditorium Knoxville Speedway and Marion County Red Rock Area.² The county has an overall population density of 60.1 persons per square mile, compared to the State average of 54.5 persons per square mile.³

The county is located in central Iowa and its economy is based on Manufacturing (28.5%), Educational, health and social services (23.3%).⁴ The county was founded in 1845 and the county seat is Knoxville.⁵

Population by Race 2011⁶



¹ <http://www.co.marion.ia.us/community.htm>

⁴ http://www.city-data.com/county/Marion_County-IA.html

⁵ https://en.wikipedia.org/wiki/XXXX_County,_Iowa

The major highway transportation in Marion is Iowa Highway 5, Iowa Highway 14, Iowa Highway 92, Iowa Highway 163, Iowa Highway 316.⁷

Homeownership in Marion County is 77.2% and is higher than the state average of 73.0%. Median price of an owner-occupied home in Marion County is \$132,300 as compared to than the state median value of \$121,300.⁸

Employment in Marion County resulted in a median household income of \$53,730 from 2007-2011 versus the state median household income of \$50,451.⁹

As of December 2012 the average unemployment rate in Marion County was 4.8.¹⁰

⁷ https://en.wikipedia.org/wiki/XXXX_County,_Iowa

⁸

⁹ www.google.com/publicdata

Detail Demographic Profile									
ZIP	NAME	County	Population:			Households		Avg Size	Per Capita Income 11
			Yr2011	Yr2016	Chg	Yr2011	Yr2016		
50044	BUSSEY	MARION	828	830	0.2%	331	333	2.5	\$20,595
50057	COLUMBIA	MARION	225	225	0.0%	85	86	2.7	\$20,118
50062	DALLAS	MARION	1603	1626	1.4%	654	668	2.5	\$20,280
50116	HAMILTON	MARION	290	289	-0.3%	108	108	2.7	\$18,810
50119	HARVEY	MARION	525	514	-2.1%	212	208	2.5	\$20,542
50138	KNOXVILLE	MARION	11583	11632	0.4%	4731	4757	2.4	\$22,764
50163	MELCHER	MARION	22	22	0.0%	7	7	3.1	\$16,989
50214	OTLEY	MARION	1101	1161	5.4%	380	400	2.9	\$24,980
50219	PELLA	MARION	13841	14125	2.1%	4893	5019	2.5	\$25,662
50225	PLEASANTVILLE	MARION	2954	2986	1.1%	1153	1170	2.5	\$24,149
50252	SWAN	MARION	396	413	4.3%	154	162	2.6	\$26,682
50256	TRACY	MARION	441	434	-1.6%	175	173	2.5	\$20,022
Totals			33,809	34,257	1.3%	12,883	13,091	2.6	\$21,799

ZIP	NAME	County	Population 2011:			GenX	MALES	FEMALES	Females Age20_35
			Yr2011	POP65p	%				
50044	BUSSEY	MARION	828	142	17.1%	182	428	400	81
50057	COLUMBIA	MARION	225	29	12.9%	48	116	109	18
50062	DALLAS	MARION	1603	270	16.8%	379	803	800	163
50116	HAMILTON	MARION	290	51	17.6%	65	149	141	29
50119	HARVEY	MARION	525	77	14.7%	110	273	252	54
50138	KNOXVILLE	MARION	11583	1988	17.2%	2591	5784	5799	1230
50163	MELCHER	MARION	22	0	0.0%	5	12	10	1
50214	OTLEY	MARION	1101	96	8.7%	228	579	522	106
50219	PELLA	MARION	13841	2120	15.3%	4135	6749	7092	1758
50225	PLEASANTVILLE	MARION	2954	471	15.9%	674	1479	1475	336
50252	SWAN	MARION	396	61	15.4%	80	201	195	37
50256	TRACY	MARION	441	66	15.0%	95	228	213	45
Totals			33,809	5,371	15.9%	8,592	16,801	17,008	3,858

ZIP	NAME	County	Population 2011:				Amer IN	Average HH Inc11	Hholds Yr2011	HH \$50K+ Income
			White	Black	Hisp					
50044	BUSSEY	MARION	815	3	10	2	\$51,518	331	138	
50057	COLUMBIA	MARION	219	1	5	0	\$53,253	85	42	
50062	DALLAS	MARION	1569	5	33	2	\$49,709	654	276	
50116	HAMILTON	MARION	286	1	3	1	\$50,508	108	45	
50119	HARVEY	MARION	519	0	6	1	\$50,872	212	91	
50138	KNOXVILLE	MARION	11257	106	201	22	\$55,155	4731	2119	
50163	MELCHER	MARION	22	0	0	0	\$53,393	7	3	
50214	OTLEY	MARION	1067	5	8	1	\$72,376	380	255	
50219	PELLA	MARION	13236	93	210	26	\$69,276	4893	2828	
50225	PLEASANTVILLE	MARION	2893	8	44	5	\$61,376	1153	631	
50252	SWAN	MARION	388	1	4	1	\$68,610	154	90	
50256	TRACY	MARION	434	1	6	1	\$50,303	175	72	
Totals			32,705	224	530	62	\$57,196	12,883	6,590	

Source: ERSA Demographics

III. Community Health Status

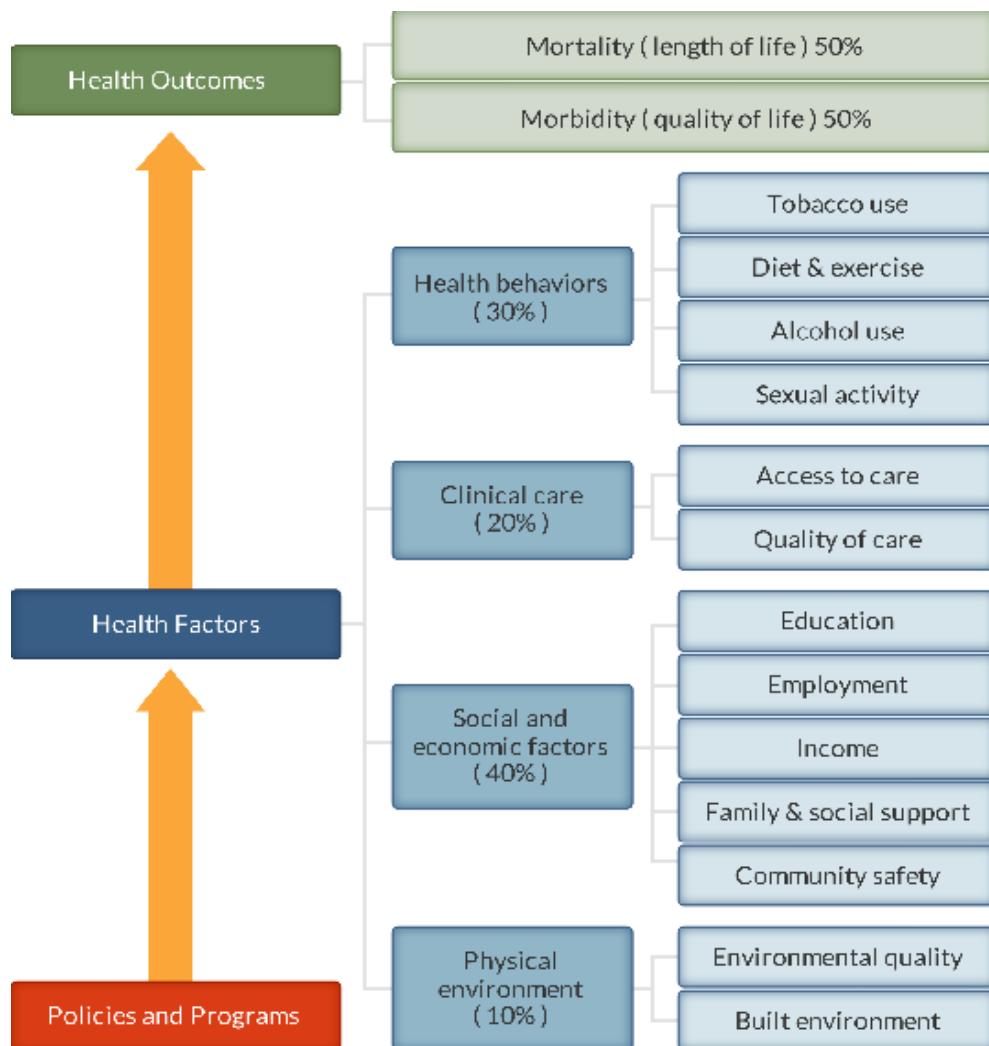
[VVV Research & Development INC]

III. Community Health Status

a. Historical Health Statistics

Health Status Profile

This section of the CHNA reviews published quantitative community health indicators and results of our recent CHNA Town Hall. To produce this profile, VVW Research & Development staff analyzed data from multiple sources. This analysis focuses on a set of published health indicators organized by ten areas of focus (10 TABS), results from the 2012 County Health Rankings and conversations from Town Hall primary research. (Note: The Robert Wood Johnson Foundation collaborates with the University of Wisconsin Population Health Institute to release annual *County Health Rankings*. As seen below in model, these rankings are based on a number of health factors.)



County Health Rankings model ©2012 UWPHI

National Review: State Health Rankings

#	IA Rank of 99 counties	Definitions	Marion CO	Trend	CAH 13
1	Physical Environment	Environmental quality	71		58
2	Health Factors		23		49
	Clinical Care	Access to care / Quality of Care	23		63
	Social & Economic Factors	Education, Employment, Income, Family/Social support, Community Safety	20		44
3	Health Outcomes		40		47
	Health Behaviors	Tobacco Use, Diet/Exercise, Alcohol Use, Sexual Activity	36		49
	Morbidity	Quality of life	53		47
	Mortality	Length of life	35		43
http://www.countyhealthrankings.org					
Note: CAH 13 represents norm scores from 13 Rural/Critical Access hospitals located in KS / IA / MO.					

Secondary Research

When considering the state of community health, it's important to review published health data by topic area. Below is a summary of key TABS of information collected:

Tab 1 Demographic Profile.

#	Population History Vital Statistics	YR 2005	YR 2006	YR 2007	YR 2008	YR 2009	% Chg 2005-09
1	Marion County IA	32,310	32,830	32,654	32,774	32,682	2%
Source: ISU Regional Economics & Community Analysis Program (2006-2009) http://www.city-data.com/ (2009)							
#	People QuickFacts	Marion Co	Trend	Iowa	CAH 13		
1	Population, 2010	33,309		3,046,355	6,710		
2	Persons under 5 years, percent, 2011	6.5%		6.5%	5.9%		
3	Persons under 18 years, percent, 2011	24.6%		23.7%	22.7%		
4	Persons 65 years and over, percent, 2011	15.8%		14.9%	19.8%		
5	Persons per square mile, 2010	60.1		54.5	10.3		
6	Living in same house 1 year & over, percent	84.3%		84.3%	84.7%		
7	Foreign born persons, percent, 2007-2011	2.0%		4.2%	1.5%		
8	Female persons, percent, 2011	50.5%		50.4%	49.2%		

Tab 1 Demographic Profile. (Con't)

#	People QuickFacts	Marion Co	Trend	Iowa	CAH 13
1	Households 2011	12,531		1219137	2,587
2	Persons per household, 2007-2011	2.5		2.4	2.2
3	Per capita money income in the past 12 months (2011 dollars)	\$25,062		\$26,110	\$20,959
4	Median household income, 2007-2011	\$53,730		\$50,451	\$41,516
countyhealthrankings.org					
#	People QuickFacts	Marion Co	Trend	Iowa	CAH 13
1	Veterans, 2006-2010	2,448		239,229	626
2	Mean travel time to work (minutes), workers age 16+, 2006-2010	20.4		18.6	15.9
3	Housing units, 2011	13,914		1,340,529	3076
4	Homeownership rate, 2007-2011	77.2%		73.0%	73.9%
5	Housing units in multi-unit structures, percent, 2007-2011	12.7%		18.5%	7.7%
6	Median value of owner-occupied housing units, 2007-2011	\$132,300		\$121,300	\$70,955
countyhealthrankings.org					
#	People QuickFacts	Marion Co	Trend	Iowa	CAH 13
1	Children in single-parent households	18%		27%	23%
2	Children in poverty	11%		16%	18%
3	Persons below poverty level,% 2007-2011	9.1%		11.9%	10.4%

Tab 2 Economic Profiles.

#	Business QuickFacts	Marion Co	Trend	Iowa	CAH 13
1	Private nonfarm establishments, 2010	836		80,801	230
2	Private nonfarm employment, 2010	15,153		1,253,095	2042
3	Private nonfarm employment, percent change, 2000-2010	-16.5		-0.9	5.7%
4	Nonemployer establishments, 2010	2,220		201,448	533
5	Total number of firms, 2007	3,254		259,931	852
6	Building permits, 2011	42		7,526	NA
countyhealthrankings.org					
#	Business QuickFacts	Marion Co	Trend	Iowa	CAH 13
1	Fast food restaurants	59.0%		44.0%	41.3%
2	Unemployment	6.3%		6.1%	4.9%
People QuickFacts					
#	People QuickFacts	Marion Co	Trend	Iowa	CAH 13
3	Per capita money income in the past 12 months (2011 dollars), 2007-2011	\$25,062		\$26,110	\$20,959
4	Median household income, 2007-2011	\$53,730		\$50,451	\$41,516
3	Median value of owner-occupied housing units, 2007-2011	\$132,300		\$121,300	\$70,955

Tab 3 Public Schools Health Delivery Profile. Currently school districts are providing on site primary health screenings and basic care.

#	Indicators- Local Schools- PSA	Knoxville School District	Pleasantville School District	Twin Cedars Schools	Melcher Dallas Schools
1	Total # Public School Nurses	1	1	1	1
2	School Nurse is part of the IEP team	YES	YES	NA	YES
3	School Wellness Plan in place (Active)	YES	NO	NA	NO
4	VISION: # Screened / Referred to Prof / Seen by Professional	130/13/unsure	216/4/2	NA	NA
5	HEARING: # Screened / Referred to Prof / Seen by Professional	500/10/unsure	312/9/unsure	NA	NA
6	ORAL HEALTH: # Screened / Referred to Prof / Seen by Professional	45/27/unsure	198/3/unsure	NA	NA
7	SCOLIOSIS: # Screened / Referred to Prof / Seen by Professional	do not screen	do not screen	NA	NA
8	# of Students served with no identified chronic health concerns	unsure/1855	90%	NA	NA
9	School has a suicide prevention program	NO	YES	NA	YES
10	Compliance on required vaccinations (%)	80%	96%	NA	NA
#	IA Health Categories	Marion Co	Trend	Iowa	CAH 13
1	Students Eligible for the Free Lunch Program (%)	30.7%		33%	27.7%
2	Bachelor's degree or higher, percent of persons age 25+, 2007-2011	23.5%		24.9%	18.6%
3	High School Graduation (%)	94.0%		89.0%	90.7%

TAB 4 Maternal and Infant Health Profile. Tracking maternal & infant care patterns are vital in understanding the foundation of family health.

#	Indicators	Marion Co	Trend	Iowa	
1	Total Live Births, 2006	422		40,592	
2	Total Live Births, 2007	451		40,835	
3	Total Live Births, 2008	401		40,221	
4	Total Live Births, 2009	420		39,662	
5	Total Live Births, 2010	374		38,514	
	Births Occurring to Teens (Mothers Under 20)	27		3137	
	Number of Births Occuring to Unmarried Women	115		13,418	
	Low Weight Births (under 2,500 grams / 5 lb. 8 oz)	26		2,536	
#	* Kid Counts Data (2011)	Marion Co	Trend	Iowa	CAH 13
1	Births with Prenatal Care in First 3 Months	88.4%		84.8%	74.8%
3	Percentage of Mothers who Smoke Any Time During Pregnancy	NA		24.0%	18.7%
4	Percent of Births with Low Birth Weight (%)	6.1%		6.5%	8.0%
5	Percent of Births Occurring to Unmarried Women	30.7%		33.0%	30.1%
6	Children Receiving WIC (Percent) – 2011	24.9%		26.9%	NA
#	Profile of Prenatal Health 2008 Vital Statistics	Marion Co	Trend	Iowa	CAH 13
1	< 18 Years	2%		2%	
2	18 - 19 Years	7%		5%	
3	20 - 25 Years	32%		29%	
4	26 - 30 Years	34%		35%	
5	31 - 35 Years	19%		22%	
6	> 35 Years	6%		7%	

TAB 5 Hospitalization/Provider Profile Understanding provider access and disease patterns are fundamental in healthcare delivery. Listed below are several vital county statistics.

#	IA Hospital Assoc PO - IP	Knoxville Hosp & Clinics (Marion Co only)			
		FFY2010	FFY2011	FFY2012p	Trend
1	Total Discharges	708	731	653	
2	Total IP Discharges-Age 0-17	60	54	40	
3	Total IP Discharges-Age 18-44	94	73	79	
4	Total IP Discharges-Age 45-64	129	126	125	
5	Total IP Discharges-Age 65-74	132	127	100	
6	Total IP Discharges-Age 75+	293	350	309	
#	IA Hospital Assoc PO - IP	Marion County (Total IP)			
		FFY2010	FFY2011	FFY2012p	Trend
1	Total Discharges	3541	3512	3503	
2	Total IP Discharges-Age 0-17	572	512	516	
3	Total IP Discharges-Age 18-44	671	598	640	
4	Total IP Discharges-Age 45-64	711	711	716	
5	Total IP Discharges-Age 65-74	610	571	532	
6	Total IP Discharges-Age 75+	979	1120	1100	
Source: IHA, Dimensions					
#	Knoxville HC Utilization	YR2010	YR2011	YR2012	Trend
1	Total Inpatient discharges (All zips)	1,142	1,289	1,064	
2	Total Emergency Visits	5,496	5,250	5,414	
3	Total Outpatient Visits	42,283	58,674	56,264	
4	Total Clinic (Physician) visits	30,959	31,274	27,815	
// www.countyhealthrankings.org		Marion Co	Trend	Iowa	CAH 13
1	Primary Care Providers (PCP Ratio)	1,928		984	1,492
2	Preventable hospital stays Avg (Ambulatory Care Sensitive Conditions)	68		63	112

TAB 6 Social & Rehab Services Profile. Behavioral health care provide another important indicator of community health status.

Social & Psychiatric Services - Clinical Data (LIMITED)				
Marion County IA	2010	2011	2012	Trend
Mental Illness	\$156,002	\$251,343	\$327,629	
Chronic Mental Illness	\$408,257	\$439,835	\$446,712	
Mental Retardation	\$834,059	\$836,365	\$1,041,976	
Developmental Disability	\$127,032	\$122,396	\$174,294	
Total	\$1,649,091	\$1,774,524	\$2,142,201	

TAB 7 Health Risk Profiles. Knowing community health risk factors and disease patterns can aid in the understanding “next steps” to improve health. Being overweight/obese; smoking, drinking in excess, not exercising etc can lead to poor health.

#	http://www.countyhealthrankings.org	Marion Co	Trend	Iowa	CAH 13
1	Adult obesity	32%		29%	32%
2	Adult smoking	20%		19%	18%
3	Excessive drinking	12%		20%	12%
4	Inadequate social support	13%		16%	16%
5	Physical inactivity	25%		25%	28%
6	Poor mental health days	2.1		2.7	2.7
7	Poor physical health days	2.8		2.8	2.9
#	Indicators	Marion Co	Trend	Iowa	CAH 13
1	Poor or Fair Health (%)	11%		12%	11%
2	Air Pollution Ozone Days	0		NA	NA
3	Water Pollution	NA		NA	NA
4	Lead Risk	NA		NA	45.7

Source: County Health Rankings, IA 2011, <http://www.countyhealthrankings.org/IA/downloads>

TAB 8 Uninsured Profiles. Based on state estimations, the number of insured is documented below. Also, the amount of charity care (last 3 years of free care) from area providers is trended below.

#	Percentages of Uninsured Population (2007)	Marion	Trend	Iowa	
1	% Uninsured (<65)	8.8%		10.8%	
Source: 2011 Iowa Health Fact Book					
Knoxville Hospital & Clinics \$		YR10	YR11	YR12	Trend
1	Local Hospital Charity Care (Bad Debt - No pay)	\$870,390	\$1,496,008	\$1,746,969	
2	Local Hospital Charity Care (Free Care)	\$258,741	\$134,559	\$119,493	

TAB 9 Mortality Profile. The leading causes of county deaths are listed below. Areas of higher than expected are so noted.

Causes of Death by County of Residence, IA 2010				
Vital Stat: Selected Causes of Death (ICD-10)		Marion Co	Trend	Iowa
TOTALS		454		61,907
1	Malignant Neoplasms, Including Neoplasms of Lymphatic and Hematopoietic Tissues	68		6,394
2	Major Cardiovascular Diseases	63		9,090
3	All Other Diseases	46		4,014
4	Diseases of Heart	42		6,851
5	Ischemic Heart Disease	31		5,026
6	Malignant Neoplasms of Respiratory and Intrathoracic Organ	21		1,784
7	Other Forms of Chronic Ischemic Heart Disease	21		3,515
8	Cerebrovascular Diseases	14		1,515
9	Atherosclerotic Cardiovascular Disease	12		1,049
10	Unintentional Injuries	11		1,292
11	Malignant Neoplasms of Digestive Organs and Peritoneum	10		1,615
12	Malignant Neoplasms of All Other and Unspecified Sites	10		831
13	Acute Myocardial Infarction	10		1,482

TAB 10 Preventive Health Profile. The following table reflects future health of county. This information also is an indicator of community awareness of preventative measures.

#	countyhealthrankings.org	Marion Co	Trend	Iowa	CAH 13
1	Diabetic screening	86%		88%	82%
3	Mammography screening	75%		71%	63%
2	Limited access to healthy foods	2%		6%	10%
4	Recreational Facilities			NA	NA
#	Indicators	Marion Co	Trend	Iowa	CAH 13
1	Adolescent Immunization Rate	20.0%		23.0%	36%
2	2011 County Immunization Assessment 2 Year Old Children - By 24 Months of Age	76.0%		64.0%	NA
3	Annual check-up visit to PCP (past year)	NA		NA	NA
4	Annual check-up visit to Eye Doctor (past year)	NA		NA	NA
5	Annual check-up visit to Dentist (past year)	NA		NA	NA

Primary Research Findings

In late January of 2013, Knoxville Hospital & Clinics sponsored/conducted primary research to area residents residing in their primary service area. (Note: 997 randomly selected Marion County area households were sent a confidential CHNA survey, with 290 replies (29.1% response rate).

2013 CHNA Returns - Knoxville Hospital & Clinics IA					
Zip	City	ST	Sample	Returns	%
50138	KNOXVILLE	IA	796	176	22.1%
50225	PLEASANTVILLE	IA	53	10	18.9%
50219	PELLA	IA	47	12	25.5%
50163	MELCHER/DALLAS	IA	18	9	50.0%
50214	OTLEY	IA	18	2	11.1%
50044	BUSSEY	IA	15	5	33.3%
50062	Dallas	IA	11	5	45.5%
50119	HARVEY	IA	10	1	10.0%
50252	SWAN	IA	9	1	11.1%
50116	HAMILTON	IA	8	2	25.0%
50256	TRACY	IA	8	1	12.5%
50057	COLUMBIA	IA	4	2	50.0%
	Unknown zip			64	
	TOTALS		997	290	29.1%

Following are key question summaries revealing public feelings toward health delivery:

Community Healthcare Needs Assessment 2013					
In general, how would you rate the overall quality of the healthcare delivered to your community?	CHNA NORM N=5886	%	Knoxville H&C N=290	%	Trend
Top 2 Boxes		80.4%		84.1%	
Very Good	1771	31.2%	92	34.1%	
Good	2791	49.2%	135	50.0%	
Fair	909	16.0%	34	12.6%	
Poor	165	2.9%	9	3.3%	
Very Poor	36	0.6%	0	0.0%	
Totals	5672		270	0.0%	

Primary Research Findings (con't)

Community Healthcare Needs Assessment 2013	Poor / Very Poor %		Trend	Very Good	Good	Fair	Poor	Very Poor	N/A	Valid N
	CHNA NORM N=5927	Knoxville H&C N=290								
a) Ambulance Service	3.1%	1.1%		91	72	14	1	1	67	179
b) Child Care	9.3%	6.6%		53	56	33	9	1	91	152
c) Chiropractor	4.3%	2.3%		79	72	18	4	0	69	173
d) Dentists	7.5%	4.5%		91	80	40	9	1	24	221
e) Emergency Room	7.9%	7.7%		103	74	26	14	3	24	220
f) Eye Doctor / Optometrist	5.6%	4.7%		116	60	26	7	3	33	212
g) Family Planning Services	14.1%	17.7%		27	33	33	12	8	127	113
h) Home Health	7.1%	4.8%		47	62	30	5	2	100	146
i) Hospice	4.9%	1.9%		92	48	13	1	2	87	156
j) Inpatient Services	5.1%	8.6%		73	72	24	13	3	53	185
k) Mental Health Services	28.8%	45.4%		14	22	47	39	30	87	152
l) Nursing Home	12.3%	16.5%		26	58	58	21	7	69	170
m) Outpatient Services	4.0%	4.8%		75	90	32	9	1	32	207
n) Pharmacy	2.1%	2.7%		113	80	21	5	1	20	220
o) Primary Care	4.4%	5.0%		97	84	26	9	2	19	218
p) Public Health Department	5.5%	8.8%		55	59	32	9	5	74	160
q) School Nurse	7.6%	4.8%		39	68	32	5	2	94	146
r) Specialist Physician care	9.3%	6.8%		48	69	47	5	7	62	176

Primary Research Findings (con't)

Community Healthcare Needs Assessment 2013	Major Problem %		Trend	Not a Problem	Somewhat of a Problem	Major Problem	Don't Know	Valid N
	CHNA NORM N=5927	Knoxville H&C N=290						
In your opinion, how much of a problem are the following causes of diseases or disability in your community?								
Cancer	55.8%	51.9%		8	82	97	46	233
Diabetes	55.1%	64.3%		9	61	126	39	235
Drugs / Alcohol	58.4%	70.9%		9	49	141	36	235
Heart Disease	48.7%	55.0%		10	76	105	43	234
Mental Disorders	35.9%	61.5%		8	59	107	61	235
Obesity	62.0%	71.4%		8	53	152	21	234
Pneumonia / Flu	17.0%	17.6%		22	132	33	44	231
Respiratory Disease	24.1%	24.9%		16	117	44	55	232
Sexually Transmitted Dis	20.9%	24.1%		21	67	28	117	233
Stroke	21.1%	19.9%		16	113	32	73	234
Suicide	18.2%	18.8%		27	98	29	78	232
Trauma	13.2%	9.4%		26	100	13	94	233

Primary Research Findings (con't)

Community Healthcare Needs Assessment 2013					
In your opinion, what areas need additional education or attention in our community? (Check all that apply)	CHNA NORM N=5927	%	Knoxville H&C N=290	%	Trend
a) Abuse / Violence	2140	5.4%	96	5.0%	
b) Aging (Dementia)	2301	5.8%	98	5.1%	
c) Alcohol	2187	5.6%	107	5.5%	
d) Alternative Medicine	1317	3.3%	61	3.2%	
e) Child Care	1242	3.2%	51	2.6%	
f) Chronic Diseases	1341	3.4%	68	3.5%	
g) Family Planning / Birth Control	1489	3.8%	85	4.4%	
h) Lead Exposure	364	0.9%	25	1.3%	
i) Mental Illness	2178	5.5%	136	7.0%	
j) Neglect	1192	3.0%	45	2.3%	
k) Nutrition	2255	5.7%	101	5.2%	
l) Obesity	3317	8.4%	161	8.3%	
m) Ozone	230	0.6%	15	0.8%	
n) Pain Management	1495	3.8%	88	4.6%	
o) Poverty	1715	4.4%	72	3.7%	
p) Preventative Healthcare	2264	5.8%	112	5.8%	
q) Sexually Transmitted Diseases	932	2.4%	48	2.5%	
r) Suicide	1410	3.6%	66	3.4%	
s) Teen Pregnancy	1922	4.9%	100	5.2%	
t) Tobacco Use	1865	4.7%	93	4.8%	
u) Uninsured	1993	5.1%	93	4.8%	
v) Vaccinations	863	2.2%	48	2.5%	
w) Water Quality	1057	2.7%	37	1.9%	
x) Wellness Education	2057	5.2%	113	5.9%	
Other (please specify)	428	1.1%	12	0.6%	
TOTALS	39356	100.0%	1931	100.0%	

Primary Research Findings (con't)

Community Healthcare Needs Assessment 2013	Poor / Very Poor %									
How well do you feel our local health care providers are doing in addressing the health needs of the following age groups?	CHNA NORM N=5927	Knoxville H&C N=290	Trend	Very Good	Good	Fair	Poor	Very Poor	N/A	Valid N
Infants	7.3%	4.1%		58	74	32	4	3	50	171
Age 1 - 12	5.5%	2.7%		64	84	34	2	3	41	187
Age 13 -17	5.7%	2.2%		51	79	45	2	2	46	179
Age 18 - 44	5.4%	3.1%		61	81	43	5	1	37	191
Age 45 - 64	5.9%	3.1%		71	81	37	4	2	33	195
Age 65 - 84	8.6%	6.7%		67	77	37	10	3	35	194
Over 85	11.0%	8.2%		65	68	34	13	2	42	182

Primary Research Findings (con't)

Community Healthcare Needs Assessment 2013					
Over the past 2 years, did you or your household receive health care services outside of your county?	CHNA NORM N=5886	%	Knoxville N=275	%	Trend
Yes	3207	59.8%	151	62.9%	
No	2156	40.2%	89	37.1%	
Totals	5363		240		

Community Healthcare Needs Assessment 2013					
Does our community need any additional healthcare providers?	CHNA NORM N=5886	%	Knoxville N=275	%	Trend
Yes (See detail Section V)	2659	59.5%	125	60.4%	
No	1809	40.5%	82	39.6%	
Totals	4468		207		

Primary Research Findings (con't)

Community Healthcare Needs Assessment 2013					
In general, how would you best describe your health? (Choose one)	CHNA NORM N=5886	%	Knoxville H&C N=290	%	Trend
Top 2 Boxes		83.3%		89.0%	
Very Good	1352	25.4%	66	28.0%	
Good	3078	57.9%	144	61.0%	
Fair	775	14.6%	24	10.2%	
Poor	94	1.8%	2	0.8%	
Very Poor	21	0.4%	0	0.0%	
Totals	5320		236	0.0%	

Community Healthcare Needs Assessment 2013					
Does your household have a provider you use for primary care?	CHNA NORM N=5886	%	Knoxville N=275	%	Trend
Yes (See detail Section V)	4612	89.4%	212	91.0%	
No	544	10.6%	21	9.0%	
Totals	5156		233		
Have you had a physical in the past 12 months?	CHNA NORM N=5886	%	Knoxville N=275	%	Trend
Yes	3945	75.9%	178	75.7%	
No	1251	24.1%	57	24.3%	
Totals	5196		235		

Community Healthcare Needs Assessment 2013

Compared to a year ago, how would you rate your overall health in general now?	CHNA NORM N=5927	%	Knoxville N=275	%	Trend
Much better than a year ago	601	11.5%	33	14.0%	
About the same	4451	84.8%	197	83.8%	
Much Worse than a year ago	195	3.7%	5	2.1%	
Totals	5247	100.0%	235	0.0%	
Do you follow these health practices?	CHNA NORM N=5927	% Yes	Knoxville N=275	%	Trend
If over 50, have you had a colonoscopy?	1489	64.1%	90	66.7%	
If male over 50, do you have annual prostate exams?	582	57.4%	38	56.7%	
If female over 40, do you have annual mammograms?	1581	70.5%	97	77.6%	
If female, do you have a pap smear every other year?	1765	63.4%	127	72.6%	
Do you get 2.5 hours a week of moderately intense physical activity?	2080	57.3%	144	62.3%	
Are you. . . ?	CHNA NORM N=5927	% Yes	Knoxville N=275	%	Trend
Eating right daily (fruits/vegs/breads)	2038	60.2%	130	56.5%	
Using tobacco products weekly	358	10.8%	28	12.8%	
Exercising 2-3 times weekly	2114	59.7%	136	58.6%	
Excessive Alcohol Consumption	280	6.0%	17	7.5%	
Receiving an annual flu shot	2741	41.6%	181	77.4%	

IV. Inventory of Community Health Resources

[VVV Research & Development INC]

Inventory of Health Services Marion County IA				
Cat	HC Services Offered in county: Yes / No	Hospital	HLTH Dept	Other
Clinic	Primary Care	Yes	No	No
Hosp	Alzheimer Center	Yes	No	Yes
Hosp	Ambulatory Surgery Centers	Yes	No	No
Hosp	Arthritis Treatment Center	No	No	No
Hosp	Bariatric/weight control services	Yes	Yes	No
Hosp	Birthing/LDR/LDRP Room	Yes	No	No
Hosp	Breast Cancer	No	No	No
Hosp	Burn Care	No	No	No
Hosp	Cardiac Rehabilitation	Yes	No	No
Hosp	Cardiac Surgery	No	No	No
Hosp	Cardiology services	Yes	No	No
Hosp	Case Management	Yes	Yes	No
Hosp	Chaplaincy/pastoral care services	Yes	No	Yes
Hosp	Chemotherapy	Yes	No	No
Hosp	Colonoscopy	Yes	No	No
Hosp	Crisis Prevention	No	Yes	Yes
Hosp	CTScanner	Yes	No	No
Hosp	Diagnostic Radioisotope Facility	Yes	No	No
Hosp	Diagnostic/Invasive Catheterization	No	No	No
Hosp	Electron Beam Computed Tomography (EBCT)	No	No	No
Hosp	Enrollment Assistance Services	Yes	No	No
Hosp	Extracorporeal Shock Wave Lithotripter (ESWL)	Yes	No	No
Hosp	Fertility Clinic	No	No	No
Hosp	FullField Digital Mammography (FFDM)	Yes	No	No
Hosp	Genetic Testing/Counseling	Yes	No	No
Hosp	Geriatric Services	Yes	Yes	Yes
Hosp	Heart	Yes	No	No
Hosp	Hemodialysis	Yes	No	No
Hosp	HIV/AIDS Services	No	No	No
Hosp	Image-Guided Radiation Therapy (IGRT)	No	No	No
Hosp	Inpatient Acute Care - Hospital services	Yes	No	No
Hosp	Intensity-Modulated Radiation Therapy (IMRT) 161	No	No	No
Hosp	Intensive Care Unit	Yes	No	No
Hosp	Intermediate Care Unit	Yes	No	No
Hosp	Interventional Cardiac Catheterization	No	No	No
Hosp	Isolation room	Yes	No	No
Hosp	Kidney	Yes	No	No
Hosp	Liver	Yes	No	No
Hosp	Lung	yes	No	No
Hosp	MagneticResonance Imaging (MRI)	Yes	No	No
Hosp	Mammograms	Yes	Access Only	No
Hosp	Mobile Health Services	Yes	No	No
Hosp	Multislice Spiral Computed Tomography (<64 slice CT)	Yes	No	No
Hosp	Multislice Spiral Computed Tomography (<64+ slice CT)	Yes	No	No
Hosp	Neonatal	No	No	No
Hosp	Neurological services	Yes	NO	No
Hosp	Obstetrics	Yes	No	No
Hosp	Occupational Health Services	yes	No	No
Hosp	Oncology Services	Yes	No	No
Hosp	Orthopedic services	Yes	NO	No
Hosp	Outpatient Surgery	Yes	No	No
Hosp	Pain Management	Yes	No	No
Hosp	Palliative Care Program	Yes	No	Yes
Hosp	Pediatric	Yes	No	No
Hosp	Physical Rehabilitation	Yes	No	Yes

Inventory of Health Services Marion County IA				
Cat	HC Services Offered in county: Yes / No	Hospital	HLTH Dept	Other
Hosp	Positron Emission Tomography (PET)	Yes	No	No
Hosp	Positron Emission Tomography/CT (PET/CT)	Yes	No	No
Hosp	Psychiatric Services	No	No	Yes
Hosp	Radiology, Diagnostic	Yes	No	No
Hosp	Radiology, Therapeutic	No	No	No
Hosp	Reproductive Health	yes	No	No
Hosp	Robotic Surgery	Yes	No	No
Hosp	Shaped Beam Radiation System 161	no	No	No
Hosp	Single Photon Emission Computerized Tomography	No	No	No
Hosp	Sleep Center	Yes	No	No
Hosp	Social Work Services	Yes	Yes	Yes
Hosp	Sports Medicine	Yes	No	Yes
Hosp	Stereotactic Radiosurgery	No	No	No
Hosp	Swing Bed Services	Yes	No	No
Hosp	Transplant Services	No	No	No
Hosp	Trauma Center -Level IV	Yes	No	No
Hosp	Ultrasound	Yes	No	No
Hosp	Women's Health Services	Yes	Yes	No
Hosp	Wound Care	Yes	No	No
SR	Adult Day Care Program	No	No	No
SR	Assisted Living	No	No	Yes
SR	Home Health Services	Yes	Yes	Yes
SR	Hospice	Yes	No	Yes
SR	LongTerm Care	Yes	No	Yes
SR	Nursing Home Services	Yes	No	Yes
SR	Retirement Housing	No	No	Yes
SR	Skilled Nursing Care	yes	No	Yes
ER	Emergency Services	Yes	No	No
ER	Urgent Care Center	Yes	No	No
ER	Ambulance Services	No	No	Yes
SERV	Alcoholism-Drug Abuse	No	No	Yes
SERV	Blood Donor Center	No	No	No
SERV	Chiropractic Services	No	No	Yes
SERV	Complementary Medicine Services	No	Yes	No
SERV	Dental Services	No	Yes	Yes
SERV	Fitness Center	No	No	Yes
SERV	Health Education Classes	Yes	Yes	Yes
SERV	Health Fair (Annual)	Yes	Yes	Yes
SERV	Health Information Center	Yes	Yes	No
SERV	Health Screenings	Yes	Yes	No
SERV	Meals on Wheels	No	No	Yes
SERV	Nutrition Programs	Yes	Yes	Yes
SERV	Patient Education Center	No	No	No
SERV	Support Groups	No	No	Yes
SERV	Teen Outreach Services	No	No	No
SERV	Tobacco Treatment/Cessation Program	Yes	By referral	Yes
SERV	Transportation to Health Facilities	No	No	Yes
SERV	Wellness Program	Yes	Yes	Yes

Providers Delivering Care in Marion County IA			
Knoxville Hospital & Clinics Primary Service Area			
	FTE Physicians		FTE Allied Staff
# of FTE Providers working in county	PSA Based DRs	Visting DRs *	PSA Based PA / NP
Primary Care:			
Family Practice	10.00		18.0
Internal Medicine / Geriatrician	5.00		
Obstetrics/Gynecology	2.00		
Pediatrics			
Family Practice/OB	9.00		
Medicine Specialists:			
Allergy/Immunology			
Cardiology		0.30	
Dermatology	1.00	0.23	
Endocrinology			
Gastroenterology			
Oncology/RADO		0.06	
Infectious Diseases			
Nephrology			
Neurology		0.09	
Psychiatry	1.00		
Pulmonary		0.02	
Rheumatology			
Sleep Disorders			
Audiology		0.23	
Surgery Specialists:			
General Surgery / Colon / Oral	5.00	0.18	
Neurosurgery			
Ophthalmology			
Orthopedics	2.00	0.16	
Otolaryngology (ENT)		0.05	
Plastic/Reconstructive			
Thoracic/Cardiovascular/Vasc		0.02	
Urology		0.09	
Hospital Based:			
Anesthesia/Pain			6.0
Emergency	5.00		
Radiology	3.00		
Pathology			
Hospitalist			
Neonatal/Perinatal			
Physical Medicine/Rehab			
Occ Medicine			
Podiatry	2.00	0.09	
TOTALS	45.00	1.53	24.0

* Total # of FTE Specialists serving community who office outside PSA.

Visiting Specialists to Knoxville Hospital & Clinics

SPECIALTY	Physician Name/Group	Office Location (City/State)	SCHEDULE	Annual Days	LOCATION OF OUTREACH CLINIC
Audiology-	Dr. Kayser / Kayser Hearing	3529 E 26th Street Des Moines, IA 50317	1st and 3rd Mondays 9-4	24	Knoxville Hospital & Clinics (Clinic)
Audiology-	Dr. Weaver / Woodward Hearing	4217 University Ave. Des Moines, IA 50311	All Thursdays except the 4th 10:30-5	36	Knoxville Hospital & Clinics (Clinic)
Cardio - Iowa Heart Mobile	Mercy Iowa Heart Center	Des Moines, IA	Tuesdays and Fridays-Mornings	96	Knoxville Hospital & Clinics (Hospital)
Cardiology -	Dr. Lemon /The Iowa Clinic/Heart and Vascular	5950 University Ave. West Des Moines, IA 50265	Thursdays 9-12	12	Knoxville Hospital & Clinics (Hospital)
Cardiology -	Dr. Wickemeyer - Jolene Runkel ARNP / Iowa Heart Center	411 Laurel ST. Suite A250 Des Moines, IA 50314	Monday- Runkel 10-4, Wickemeyer 1-4	48	Knoxville Hospital & Clinics (Clinic)
Dermatology -	Dr. Steven Harlan / Dermatology and Dermatologic Surgical Center	8131 University Blvd. Clive, Ia 50325	1st Tuesday of the month	12	Knoxville Hospital & Clinics (Hospital)
Dermatology -	Linda Schilling, ARNP	4300 New York Ave. Des Moines, IA 50310	Every other Thursday 9-4	24	Knoxville Hospital & Clinics (Clinic)
Diabetic Education-	Caitlin Rondello		Mondays and Wednesdays	96	Knoxville Hospital & Clinics (Hospital)
ENT	Dr. Schulte / The Iowa Clinic	5950 University Ave. Suite 265 West Des Moines, IA 50266	4th Monday 9-?	12	Knoxville Hospital & Clinics (Hospital)
General Surgeon -	Dr. Jake Settles	Bloomfield, IA	As needed no firm schedule	?	Knoxville Hospital & Clinics (Hospital)
General Surgeon -	Dr. Kermod / Knoxville Hospital & Clinics	1002 South Lincoln Knoxville, IA 50138	Full time M-F employed by KHC	260	Knoxville Hospital & Clinics (Hospital)
General Surgeon -	Dr. Tish Busick / Mercy	Des Moines, IA	2 Wednesdays a month	24	Knoxville Hospital & Clinics (Hospital)
Gynecology -	Dr. Mitchell Khan		Covers call only for OB		Knoxville Hospital & Clinics (Hospital)
Hematology/Oncology -	Dr. Morton /Medical Oncology and Hematology Associates	1221 Pleasant Street Des Moines, IA 50309	2nd and 4th Tuesdays 10:30-5	24	Knoxville Hospital & Clinics (Hospital)
Nerve Conduction EMG -	Dr. Hurd /	809 46th Street West, Des Moines, IA 50265	Tuesdays 9-3	48	Knoxville Hospital & Clinics (Clinic)
Orthopedic -	Dr. Kimelman & Dudley Phipps / Iowa Orthopedics	450 Laurel Street Des Moines, IA 50314	Thursdays 8-12	48	Knoxville Hospital & Clinics (Clinic)
Orthopedic -	Dr. Lin / Des Moines Orthopedics	1301 Pennsylvania Ave. Des Moines, IA 50316	Every other Wednesday 9-12	24	Knoxville Hospital & Clinics (Clinic)
Pod (Foot)	Dr. Jill Frerichs / Capital Orthopedic Sports Medicine	12499 University Ave. Suite 210 Clive, IA 50325	Tuesdays 9-11:15	48	Knoxville Hospital & Clinics (Clinic)
Psychologist	Dr. Tomas Gonzalez	Des Moines, IA	Monday, Tuesday, & Saturday	144	
Pulmonary -	Dr. T.K. Narayan	939 Office Parks Road Suite 308 West Des Moines, IA 50265	3rd Wednesday 1-4	12	Knoxville Hospital & Clinics (Clinic)
Radiology	Dr. Robert Filippone		Reads xrays does his own billing, on sight as requested.		Knoxville Hospital & Clinics (Hospital)
Speech Therapy-	Megan Hargens / Central Rehabilitation		Wednesday Therapist not an MD		Knoxville Hospital & Clinics (Hospital)
Urology -	Dr. Holt / Des Moines Urology	1301 Pennsylvania Ave. Des Moines, IA 50316	2nd and 4th Friday	24	Knoxville Hospital & Clinics (Hospital)
Vascular -	Dr. Massop / The Iowa Clinic	5950 University Ave. Suite 231 West Des Moines, IA 50266	2nd Monday 9-12	12	Knoxville Hospital & Clinics (Hospital)

Marion County Iowa Knoxville Hospital & Clinics PSA Health Care Area Service Directory

Emergency Numbers

Police/Sheriff 911

Fire 911

Ambulance 911

Non-Emergency Numbers

Marion County Sheriff (641) 828-2220

Marion County Ambulance (641) 842-5002

Municipal Non-Emergency Numbers

	<u>Police/Sheriff</u>	<u>Fire</u>
Knoxville	(641) 828-0541	(641) 828-0586
Pella	(641) 628-4921	(641) 628-1627
Pleasantville	(515) 848-3112	(515) 848-5123

QUICK REFERENCE PHONE GUIDE

Action Now	1-800-622-5168
Al-Anon "Free to Be Me"	(515) 462-4253
Alcoholics Anonymous	(515) 282-8550
Alzheimer's Disease Helpline	1-800-272-3900
American Cancer Society	1-800-227-2345
American Red Cross	1-800-887-2988
Arthritis Foundation	1-866-378-0636
Battered Women	1-800-433-SAFE
Child Abuse Hotline	1-800-795-9606
Dependent Adult Abuse Hotline	1-800-362-2178
Dependent Adult and Child Abuse	1-800-652-9516
Domestic Abuse Hotline	1-800-942-0333
First Call for Help	(515) 246-6555
Foundation Through Crisis	1-800-332-4224
Gambling Hotline	1-800-238-7633
Iowa Arson/Crime Hotline	1-800-532-1459
Iowa Child Abuse Reporting Hotline	1-800-362-2178
Iowa State Patrol Emergency	1-800-525-5555
Medicare	1-800-MEDICARE
Mental Health Information and Referral	1-800-562-4944
National Alcohol Hotline	1-800-252-6465
National Center for Missing & Exploited Children	1-800-THE LOST
National Institute on Drugs	1-800-662-4537
Poison Control	1-800-222-1222
Sr Health Ins Info Program (Shiip)	1-800-351-4664
Substance Abuse Information & Treatment	1-800-662-HELP
Suicide Prevention Hotline	1-800-SUICIDE
Teen Line (Red Cross)	1-800-443-8336

General Online Healthcare Resources

Doctors and Dentists--General

[AMA Physician Select: Online Doctor Finder](#) (American Medical Association) [DocFinder](#) (Administrators in Medicine) [Find a Dentist](#) (Academy of General Dentistry) [Find a Dentist: ADA Member Directory](#) (American Dental Association) [Physician Compare](#) (Centers for Medicare & Medicaid Services)

Hospitals and Clinics--General

[Find a Health Center](#) (Health Resources and Services Administration) [Find a Provider: TRICARE Provider Directories](#) (TRICARE Management Activity) [Hospital Quality Compare](#) (Centers for Medicare & Medicaid Services)

Doctors and Dentists--Specialists

[ACOG's Physician Directory](#) (American College of Obstetricians and Gynecologists) [ACR: Geographic Membership Directory](#) (American College of Rheumatology) [American College of Surgeons Membership Directory](#) (American College of Surgeons) [American Osteopathic Association D.O. Database](#) (American Osteopathic Association) [ASGE: Find a Doctor](#) (American Society for Gastrointestinal Endoscopy) [Cancer Genetics Services Directory](#) (National Cancer Institute) [Child and Adolescent Psychiatrist Finder](#) (American Academy of Child and Adolescent Psychiatry) [Dystonia: Find a Health Care Professional](#) (Dystonia Medical Research Foundation) [Expert Locator: Immunologists](#) (Jeffrey Modell Foundation) [Find a Dermatologic Surgeon](#) (American Society for Dermatologic Surgery) [Find a Dermatologist](#) (American Academy of Dermatology) [Find a Gastroenterologist](#) (American College of Gastroenterology) [Find a Gynecologic Oncologist](#) (Society of Gynecologic Oncologists) [Find a Hand Surgeon](#) (American Society for Surgery of the Hand) [Find a Hematologist](#) (American Society of Hematology) [Find a Neurologist](#) (American Academy of Neurology) [Find a Pediatric Dentist](#) (American Academy of Pediatric Dentistry) [Find a Pediatrician or Pediatric Specialist](#) (American Academy of Pediatrics) [Find a Periodontist](#) (American Academy of Periodontology) [Find a Physical Medicine & Rehabilitation Physician](#) (American Academy of Physical Medicine and Rehabilitation) [Find a Plastic Surgeon](#) (American Society of Plastic Surgeons) [Find a Podiatrist](#) (American Podiatric Medical Association) [Find a Thyroid Specialist](#) (American Thyroid Association) [Find a Urologist](#) (American Urological Association) [Find an ACFAS Physician](#) (American College of Foot and Ankle Surgeons) [Find an Allergist/Immunologist: Search](#) (American Academy of Allergy, Asthma, and Immunology) [Find an Endocrinologist](#) (Hormone Health Network) [Find an Eye M.D.](#) (American Academy of Ophthalmology) [Find an Interventional Radiologist](#) (Society of Interventional Radiology) [Find an Oncologist](#) (American Society of Clinical Oncology) [Find an Oral and Maxillofacial Surgeon](#) (American Association of Oral and Maxillofacial Surgeons) [Find an Orthopaedic Foot and Ankle MD](#) (American Orthopaedic Foot and Ankle Society) [Find an Otolaryngologist \(ENT\)](#) (American Academy of Otolaryngology--Head and Neck Surgery) [Finding an Eye Care Professional](#) (National Eye Institute) [GI Locator Service](#) (American Gastroenterological Association)

Other Healthcare Providers

[AMTA's Find a Massage Therapist](#) (American Massage Therapy Association) [Cancer Genetics Services Directory](#) (National Cancer Institute) [Find a Diabetes Educator](#) (American Association of Diabetes Educators) [Find a Genetic Counselor](#) (National Society of Genetic Counselors) [Find a Midwife](#) (American College of Nurse-Midwives) [Find a Nurse Practitioner](#) (American Academy of Nurse Practitioners) [Find a Physical Therapist](#) (American Physical Therapy Association) [Find a Professional: Online Directory of Audiology and Speech-Language Pathology Programs](#) (American Speech-Language-Hearing Association) [Find a Registered Dietitian](#) (Academy of Nutrition and Dietetics) [Find a Therapist](#) (Anxiety Disorders Association of America) [Find an Audiologist](#) (American Academy of Audiology) [Manual Lymphatic Drainage Therapists](#) (National Lymphedema Network) [National Register of Health Service Providers in Psychology](#) (National Register of Health Service Providers in Psychology) [NCCAOM: Find Nationally Certified Practitioners](#) (National Certification Commission for Acupuncture and Oriental Medicine) [Search for an Emergency Contraception Provider in the United States](#) (Princeton University, Office of Population Research)

Hospitals and Clinics--Specialized

[Accredited Birth Centers](#) (Commission for the Accreditation of Birth Centers) [Alzheimer's Disease Research Centers](#) (National Institute on Aging) [Cystic Fibrosis Foundation: Find a Chapter](#) (Cystic Fibrosis Foundation) [Cystic Fibrosis Foundation: Find an Accredited Care Center](#) (Cystic Fibrosis Foundation) [Dialysis Facility Compare](#) (Centers for Medicare & Medicaid Services) [FDA Certified Mammography Facilities](#) (Food and Drug Administration) [Find a Free Clinic](#) (National Association of Free Clinics) [Find an Indian Health Service Facility](#) (Indian Health Service) [Find Treatment Centers](#) (American Cancer Society) [Genetics Clinic Directory Search](#) (University of Washington) [Locate a Sleep Center in the United States by Zip Code](#) (American Academy of Sleep Medicine) [MDA ALS Centers](#) (Muscular Dystrophy Association) [Mental Health Services Locator](#) (Substance Abuse and Mental Health Services Administration) [NCI Designated Cancer Centers](#) (National Cancer Institute) [Neurofibromatosis Specialists](#) (Children's Tumor Foundation) [Post-Polio Directory 2011: Post-Polio Clinics, Health Professionals, Support Groups](#) (Post-Polio Health International including International Ventilator Users Network) [Spina Bifida Clinic Directory](#) (Spina Bifida Association of America) [Substance Abuse Treatment Facility Locator](#) (Substance Abuse and Mental Health Services Administration) [Transplant Center Search Form](#) (BMT InfoNet) [U.S. NMDP Transplant Centers](#) (National Marrow Donor Program) [VA Health Care Facilities Locator & Directory](#) (Veterans Health Administration) [Where to Donate Blood](#) (AABB) [Where to Donate Cord Blood](#) (National Marrow Donor Program)

Other Healthcare Facilities and Services

[Alzheimer's Disease Resource Locator](#) (Fisher Center for Alzheimer's Research Foundation) [American College of Radiology Accredited Facility Search](#) (American College of Radiology) [APA District Branch / State Association Directory](#) (American Psychiatric Association) [Directory of Organizations \(Deafness and Communication Disorders\)](#) (National Institute on Deafness and Other Communication Disorders) [Dog Guide Schools in the United States](#) (American Foundation for the Blind) [Eldercare Locator](#) (Dept. of Health and Human Services) [Find a Hospice or Palliative Care Program](#) (National Hospice and Palliative Care Organization) [Find Services \(for People with Vision Loss\)](#) (American Foundation for the Blind) [Find Urgent Care Centers by State](#) (Urgent Care Association of America) [Genetic Testing Laboratory Directory](#) (University of Washington) [Home Health Compare](#) (Centers for Medicare & Medicaid Services) [Medicare: Helpful Contacts](#) (Centers for Medicare & Medicaid Services) [Muscular Dystrophy Association Clinics and Services](#) (Muscular Dystrophy Association) [National Foster Care and Adoption Directory Search](#) (Children's Bureau) [Nursing Home Compare](#) (Centers for Medicare & Medicaid Services) [Organizations That Offer Support Services](#) (National Cancer Institute) [Poison Control Centers](#) (American Association of Poison Control Centers) [Resources and Information for Parents about Braille](#) (American Foundation for the Blind) [State-Based Physical Activity Program Directory](#) (Centers for Disease Control and Prevention) [TSA Chapters in the USA](#) (Tourette Syndrome Association) [Violence against Women: Resources by State](#) (Dept. of Health and Human Services, Office on Women's Health) [Where to Find Hair Loss Accessories and Breast Cancer Products](#) (American Cancer Society)

SOURCE: MedlinePlus provides links to directories to help you find libraries, health professionals, services and facilities. NLM does not endorse or recommend the organizations that produce these directories, nor the individuals or organizations that are included in the directories.

Family Practice

KHC - Family Practice

Earl J McKeever, MD
1202 West Howard Knoxville, IA 50138
641-828-7211

KHC - Family Practice

Bryon Schaeffer, MD
1202 West Howard Knoxville, IA 50138
641-828-7211

KHC - Family Practice

Michael VanNatta, DO
1202 West Howard Knoxville, IA 50138
641-828-7211

KHC - Family Practice, OB

Valerie Bonnett, MD
1202 West Howard Knoxville, IA 50138
641-828-7211

KHC - Family Practice, OB

Brent Hoehns, MD
1202 West Howard Knoxville, IA 50138
641-828-7211

KHC - Family Practice, OB

Dan Rowley, MD
1202 West Howard Knoxville, IA 50138
641-828-7211

PRCH - Family Practice

Nancy Vander Broek, DO
405 Monroe Pella, IA 50219
641-621-2412

PRHC - Family Practice, OB

Richard Posthuma, MD
405 Monroe Pella, IA 50219
641-621-2413

**PRHC - Family Practice OB,
Colonoscopy**

Spencer Carlstone, MD
405 Monroe Pella, IA 50219
641-621-2409

PRHC - Family Practice

Mitch Blom, DO
405 Monroe Pella, IA 50219
641-621-2414

PRHC - Family Practice

Danielle Clark, DO
405 Monroe Pella, IA 50219
641-621-2407

PRHC - Family Practice, OB

Rob Bruxvoort, MD
405 Monroe Pella, IA 50219
641-628-6677

PRHC - Family Practice, OB

Anne Hellbusch, DO
405 Monroe Pella, IA 50219
641-621-2659

PRHC - Family Practice, OB

Galyn Vande Zande, DO
405 Monroe Pella, IA 50219
641-621-2406

PRHC - Family Practice, OB

Tereasa VanZee, DO
405 Monroe Pella, IA 50219
641-621-2421

PRHC - Family Practice, OB

Craig Wittenberg, MD
405 Monroe Pella, IA 50219
641-621-2405

**PRHC - Knoxville Clinic - Family
Practice**

Todd Triemer, DO
1208 N. Lincoln Knoxville, IA 50138
641-828-3832

**PRHC - Knoxville Clinic - Family Prac,
OB**

Kevin Mace, DO
1208 N. Lincoln Knoxville, IA 50138
641-828-3832

**PRHC - Knoxville Clinic - Family
Practice**

Scott Barclay, MD
1208 N. Lincoln Knoxville, IA 50138
641-828-3832

**PRHC - Monroe & Sully Clinics - Fam.
Practice**

William Bitsas, MD
100 East Sherman Monroe, IA 50170
641-259-2155

PRHC - Ottumwa Clinic - Family Practice, OB

Betsy Siitari, MD, FAAFP, FACOG
405 Monroe Pella, IA 50219
641-455-5200

PRHC - Ottumwa Clinic - Family Practice

John Kanis, DO
405 Monroe Pella, IA 50219
641-455-5200

General Surgery

KHC - General Surgery

David Kermode, DO
1202 West Howard Knoxville, IA 50138
641-828-7211

KHC - General Surgery (Specialty Clinic)

Tish Busick, MD
1202 West Howard Knoxville, IA 50138
641-828-7211

KHC - General Surgery Specialty Clinic

Jake Settles, DO
1202 West Howard Knoxville, IA 50138
641-828-7211

PRHC - General Surgery

Timothy Breon, MD
405 Monroe Pella, IA 50219
641-628-6772

PRHC - General Surgery

David Coster, MD
405 Monroe Pella, IA 50219
641-628-6772

PRHC - General Surgery, Colonoscopy

Matt Morgan, DO, FACOS
405 Monroe Pella, IA 50219
641-628-6772

PRHC - General Surgery, Colonoscopy

Mike Thompson, DO, FACOS, FFSMB
405 Monroe Pella, IA 50219
641-628-6772

Specialty Services

Allergy

KHC/PRHC - Allergy, Lung & Sleep Center Pella. Spec. Clinic

Michael McCubbin, MD, PC
1108 Washington St. Pella, IA 50219
641-621-1487

Anesthesia

KHC - Anesthesia

Eric Barrett, CRNA
1002 S. Lincoln Knoxville, IA 50138
641-842-2151

KHC - Anesthesia

Steven Eck, CRNA
1002 S. Lincoln Knoxville, IA 50138
641-842-2151

KHC - Anesthesia

Tyler McDonald, CRNA
1002 S. Lincoln Knoxville, IA 50138
641-842-2151

PRHC - Anesthesia

Tim Kinkade, CRNA
404 Jefferson St. Pella, IA 50219
641-628-3150

PRHC - Anesthesia

Shannon Krumm, CRNA
404 Jefferson St. Pella, IA 50219
641-628-3150

PRHC - Anesthesia

Andy Hunsinger, CRNA
404 Jefferson St. Pella, IA 50219
641-628-3150

Audiology

KHC/PRHC- Audiology Specialty Clinic

Dean Kayser, AUD
1202 West Howard Knoxville, IA 50138
405 Monroe Pella, IA 50219
800-516-2020

KHC - Audiology - Specialty Clinic

Kent Weaver, AUD

1202 West Howard Knoxville, IA 50138
641-828-7211

PRHC- Audiology - Specialty Clinic

Dotty Walters, AUD
405 Monroe Pella, IA 50219
800-233-4327

Behavioral Health

Capstone Behavioral Healthcare - Knoxville

Laura Van Cleve, DO
104 S 6th Street Knoxville, IA 50138
641-842-4925

Knoxville/KHC - Adult Psychologist

Tomas Gonzalez-Forestier, PhD
1515 W Pleasant St Suite 116B Knoxville, IA 50138
641-842-3101

Cardiology

KHC/PRHC - Cardiology Specialty Clinic

David Lemon, MD
1202 West Howard Knoxville, IA 50138
405 Monroe Pella, IA 50219
515-875-9090/641-828-7211

KHC/PRHC - Cardiology Specialty Clinic

William Wickemeyer, MD
405 Monroe Pella, IA 50219
1202 West Howard Knoxville, IA 50138
800-670-9428/641-828-7211

PRHC - Cardiology

Dirk Versteeg, MD
405 Monroe Pella, IA 50219
515-875-9090

Chiropractic

Browne Family Chiropractic

Dr. Beau Browne, DC
312 Oskaloosa St Pella, IA 50219
641-628-3133 F: 641-628-3033

Chiropractic Health Center

Dr. E. Scott Coyle, DC
204 E Montgomery St. Knoxville, IA 50138

641-842-2239 F:

Knoxville Chiropractic Clinic

Dr. Larry Formanek, DC
115 E. Main Street Knoxville, IA 50138
641-842-3007 F: 641-842-5612

Precision Chiropractic

Dr. Jenny Slykhuis, DC
813 N Lincoln St. Su. 5 Knoxville, IA 50138
641-828-7228 F: 641-842-7140

The Chiropractic Hut

114 1/2 E. Monroe St Pleasantville, IA 50225
515-848-3334 F:

VanHemert Chiropractic

Dr. Russell VanHemert, DC
1310 Washington St Pella, IA 50219
641-628-2099 F: 641-628-2324
Dr. Brian Lange, DC
410 E. Robinson St. Knoxville, IA 50138
641-842-3227

Dermatology

KHC - Dermatologist Specialty Clinic

Steven Harlan, MD
1202 West Howard Knoxville, IA 50138
641-828-7211

Knoxville Iowa Dermatology

Jennifer Palmer, MD
2605 Washington St Pella, IA 50219
641-620-9119

KHC - Dermatology

Linda Shilling, ARNP
1202 West Howard Knoxville, IA 50138
641-828-7211

ENT

KHC - Iowa Clinic - ENT Specialty Clinic

Douglas Schulte, MD
1202 West Howard Knoxville, IA 50138
800-248-4443

PRHC - Ear, Nose, Throat

Heidi Close, MD

405 Monroe Pella, IA 50219
641-628-9500

Iowa ENT Center
Thomas Paulson MD
405 Monroe St # A
Pella, IA 50219
5152234368

Iowa ENT Center
Tim Simplot MD
405 Monroe St # A
Pella, IA 50219
5152234368

Iowa ENT Center
Robert S Warner DO
405 Monroe St # A
Pella, IA 50219
5152234368

Iowa ENT Center
Simon K Wright DO
405 Monroe St # A
Pella, IA 50219
5152234368

Endocrinology

PRHC - Endocrinology Specialty Clinic
Jaspreet Chahal, MD
405 Monroe Pella, IA 50219
877-891-5350

PRHC - Endocrinology Specialty Clinic
Thomas O'Dorisio, MD
405 Monroe Pella, IA 50219
877-891-5350

Emergency Medicine

PRHC - ER
Matthew Doty, MD
404 Jefferson St Pella, IA 50219
641-628-3150

PRHC - ER
Matthew Gritters, MD
404 Jefferson St Pella, IA 50219
641-628-3150

PRHC - ER
Jeffrey Hartung, DO
404 Jefferson St Pella, IA 50219
641-628-3150

PRHC - ER
Ryan Thoreson, DO
404 Jefferson St Pella, IA 50219
641-628-3150

PRHC - ER, Occupational Medicine
Tim Dykstra, MD, FAAFP
404 Jefferson St Pella, IA 50219
641-628-3150/ 641-628-6650

Internal Medicine

KHC - Internal Medicine
Jayaveerapandian Bhama, MD
1202 West Howard Knoxville, IA 50138
641-828-7211

PRHC - Internal Medicine
Ron Childerston, DO
405 Monroe Pella, IA 50219
641-621-2461

PRHC - Internal Medicine
Doug Kanis, DO
405 Monroe Pella, IA 50219
641-621-2401

PRHC - Internal Medicine
Robin Vande Voort, MD
405 Monroe Pella, IA 50219
641-621-2462

PRHC - Internal Medicine - Colonoscopy
Dale Vander Broek, DO
405 Monroe Pella, IA 50219
641-621-2402

OB/ Gynecology

Knoxville OB/GYN
Mitchell Khan, DO
410 East Robinson Suite 2B Knoxville, IA
50138
641-842-3700

PRHC - Ottumwa Clinic - Gynecology
Joseph Coleman, MD, FACOG
405 Monroe Pella, IA 50219

641-455-5200

PRHC - Gynecology

Dale Lensing, MD, FACOG
405 Monroe Pella, IA 50219
641-620-2144

Nephrology

PRHC - Nephrology Specialty Clinic

Bruce Buchsbaum, MD
405 Monroe Pella, IA 50219
641-621-2280

PRHC - Nephrology Specialty Clinic

Sanjiv Dahal, MD, FASN
405 Monroe Pella, IA 50219
641-241-5710

Neurology

PRHC - Neurology Specialty Clinic

Mostafa Hammoudi, MD
405 Monroe Pella, IA 50219
641-621-2280

PRHC - Neurology Specialty Clinic

Todd Janus, MD, PhD
405 Monroe Pella, IA 50219
641-621-2280

Occupational Medicine

PRHC - Occupational Med

Kam Dennill, PA-C
405 Monroe Pella, IA 50219
641-628-6650

PRHC - Occupational Med

Karen Emmert, PA-C
405 Monroe Pella, IA 50219
641-628-6650

Oncology

KHC - Oncology/Hematology specialty Clinic

Roscoe Morton, MD
1202 West Howard Knoxville, IA 50138
641-828-7211

PRHC - Oncology Specialty Clinic

Mark Westberg, MD

405 Monroe Pella, IA 50219
641-621-2280

Ophthalmology

KHC - Ophthalmology Specialty Clinic

Chris K. DenOuden, DO
1202 West Howard Knoxville, IA 50138
641-828-7211

Optometrist

Knoxville - Optometrist - Eye Health Solutions

Jason Maasdam, OD
100 South 5th St Knoxville, IA 50138
641-842-3616 F: 641-842-5453

Knoxville - Optometrist - Whylie Eye Care

Robert R Powell, OD
123 E Main St. Knoxville, IA 50138
641-842-2020

Pella - Optometrist - Eye Care Partners

Ralph DrHaan, OD
823 Franklin St. Pella, IA 50219
641-628-9225

Pella - Optometrist - Eye Care Partners

Jim Else, OD
823 Franklin St. Pella, IA 50219
641-628-9225

Pella - Optometrist - Eye Care Partners

Sandra Hundt, OD
823 Franklin St. Pella, IA 50219
641-628-9225

Pella - Optometrist - Eye Care Partners

Wayne VanderLeest, OD
823 Franklin St. Pella, IA 50219
641-628-9225

Pella - Optometrist - Family Eye Care Center

Kevin Jones, OD
518 Franklin St Pella, IA 50219
641-628-2023 F: 641-628-2031

Pella - Optometrist - Family Eye Care Center

Michelle Jones, OD

518 Franklin St Pella, IA 50219
641-628-2023 F: 641-628-2031

Pella - Optometrist - Whylie Eye Care

Christopher Huston, OD
1534 Washington St Pella, IA 50219
641-628-2530

Orthopedics

**KHC - Des Moines Orthopedics -
Specialty Clinic**

Ian Lin, MD
1202 West Howard Knoxville, IA 50138
641-828-7211

**KHC - Iowa Orthopedics Specialty
Clinic**

Joshua Kimelman, DO
1202 West Howard Knoxville, IA 50138
641-828-7211

PRHC - Iowa Ortho - Specialty Clinic

Mark R. Matthes, MD
405 Monroe Pella, IA 50219
641-621-1390

PRHC - Iowa Ortho Specialty Clinic

Joseph F. Galles, MD
405 Monroe Pella, IA 50219
641-621-1390

PRHC - Iowa Ortho Specialty Clinic

Ze-Hui Han, MD
405 Monroe Pella, IA 50219
641-621-1390

PRHC - Orthopedics

Mark Fish, DO
405 Monroe Pella, IA 50219
641-621-1390

PRHC - Orthopedics

Christopher B. Vincent, MD
405 Monroe Pella, IA 50219
641-621-1390

PRHC - Orthopedics - Ottumwa Clinic

Timothy Vinyard, MD
405 Monroe Pella, IA 50219
641-455-5200

PRHC - Orthopedics Specialty Clinic

Steven Aviles, MD
405 Monroe Pella, IA 50219
641-621-1390

Iowa Orthopedic Center

Ze Hui Han MD
404 Jefferson St # L
Pella, IA 50219
6416211390

Iowa Orthopedic Center

Mark R Matthes MD
404 Jefferson St # L
Pella, IA 50219
6416211390

Iowa Orthopedic Center

Jamie Mc Donald
404 Jefferson St # L122b
Pella, IA 50219
6416211390

Iowa Orthopedic Center

Daniel W Vande Lune MD
404 Jefferson St # L122b
Pella, IA 50219
6416211390

Iowa Orthopedic Center

Christopher Vincent MD
404 Jefferson St # L
Pella, IA 50219
6416211390

Perinatology

PRHC - Perinatology Specialty Clinic

Neil Mandsager, MD
405 Monroe Pella, IA 50219
641-628-6620

**Physical Therapy and Rehabilitation
Services**

Work Systems Rehab & Fitness

308 SE 9th St. Pella, IA 50219
641-621-0230 F: 641-621-0319
Shelly DeRuiter, PT
Elise Spronk, MS, OTR/L
Joel Watters, PT, DPT
Mark Blankespoor, PT, DPT
Troy VanderMolen, PT

PRHC - PT

405 Monroe St Pella, IA 50219
641-628-6623

Barbara Peterson, PTA
Countney Creamer, PTA
Gary Elises, PT, CSCS
Shawna Fopma, MSPT
Amy Herdegen, DPT
Zachary Kanis, DPT, MHA
Debra Kinney, PTA
Lisa Kisling, DPT, CSCS
Michelle Morgan, MSPT
Megan Nelson, DPT
Tamara Pommer, DPT
Jessica Verdon, DPT
Gene Schmitz, PT, OCS, ATC, MS,
CSCS
Liz Vermeer, DPT, CCCE

PRHC - Athletic Trainer

641-628-6623
Amy Stevens, ATC CSCS

PRHC - Massage Therapy

641-628-6623
Dawn Core, LMT
Jennifer Lunkley, PTA, LMT

PRHC - Occupational Therapy

641-628-6623
Brenda Birdsell, OTR/L, CLT
Kara Groenenboom, COTA/L, CLT
Abby Mockenhaupt, OTR/L, CLT
Sarah Vogel, OTR/L
PRHC - Speech Therapy
Kayla Jiskoot, MA, CCS-SLP
Tara Leidigh, MA, CCC-SLP
Jacayla Vittetoe, MA, CCC-SLP

KHC- PT

1002 S Lincoln St. Knoxville, IA 50138
641-842-1464
F: 641-842-1470
Susan Waddle, Med, MS PT, DPT
Steve Cassabaum, MS PT, DPT
Matt DeWall, MPT, CSCS
Brooke Shelquist, DPT
Sara Boyce, PTA
Austin Ollinger, PTA

Podiatry**KHC/PRHC - Podiatry Specialty Clinic**

Jill Frerichs, DPM
405 Monroe Pella, IA 50219
1202 West Howard Knoxville, IA 50138
/641-828-7211

Pella Foot & Ankle Clinic

Sean J. McMurray, DPM
908 Washington St Pella, IA 50219
641-628-3542

Pella Foot & Ankle Clinic

Kevin J. Mulvey, DPM
908 Washington St Pella, IA 50219
641-628-3542

Pulmonology**KHC - Pulmonology Specialty Clinic**

T.K Narayan, MD
1202 West Howard Knoxville, IA 50138
641-828-7211

PRHC - Pulmonology Specialty Clinic

Neil Horning, MD
405 Monroe Pella, IA 50219
641-621-2280

Radiologist**KHC - Radiologist**

Bob Filippone, DO
1002 South Lincoln Knoxville, IA 50138
641-842-2151

PRHC - Radiology

Lee Henry, DO
404 Jefferson St Pella, IA 50219
641-628-6620

PRHC - Radiology

Alison Smith, DO
405 Monroe Pella, IA 50219
641-628-6620

Urology**KHC - Urology Specialty Clinic**

Stephen Holt, DO

1202 West Howard Knoxville, IA 50138
641-828-7211

PRHC - Urology Specialty Clinic

Russell Bandstra, MD
405 Monroe Pella, IA 50219
866-613-4323

PRHC - Urology Specialty Clinic

Aaron Smith, DO
405 Monroe Pella, IA 50219
866-613-4323

Vascular Surgery

**KHC/PRHC - Vascular Surgery
Specialty Clinic**

Douglas Massop, MD
1202 West Howard Knoxville, IA 50138
405 Monroe Pella, IA 50219
515-875-9090

**PRHC IA Clinic Heart & Vascular Care-
Specialty Clinic**

James Lovell, DO, FACC
404 Jefferson St Pella, IA 50219
515-875-9090

Physicians & Surgeons – Other

Matt Biggerstaff MD

404 Jefferson St
Pella, IA 50219
5152456425

James Brunz MD

404 Jefferson St
Pella, IA 50219
5152456425

Robert J Bruxvoort MD

405 Monroe St
Pella, IA 50219
6416283832

Spencer L Carlstone MD

405 Monroe St
Pella, IA 50219
6416283832

Timothy Dykstra MD

405 Monroe St

Pella, IA 50219
6416283832

David P Fredrickson MD

405 Monroe St
Pella, IA 50219
6416283832

Matthew A Gritters MD

404 Jefferson St
Pella, IA 50219
6416283150

Clint Harris MD

404 Jefferson St
Pella, IA 50219
5152456425

Stewart J Kanis DO

405 Monroe St
Pella, IA 50219
6416283832

Thomas Klein DO

404 Jefferson St
Pella, IA 50219
5152456425

Richard D Posthuma MD

405 Monroe St
Pella, IA 50219
6416283832

Dana Simon MD

404 Jefferson St
Pella, IA 50219
5152456425

Nancy A Vander Broek DO

405 Monroe St
Pella, IA 50219
6416283832

Dale Vander Brook DO

405 Monroe St
Pella, IA 50219
6416283832

Kurt R Vander Ploeg MD

615 Washington St
Pella, IA 50219
6416282222

Robin Vande Voort MD

405 Monroe St
Pella, IA 50219
6416283832

Galyn W Vande-Zande DO

405 Monroe St
Pella, IA 50219
6416283832

David Waddle MD

404 Jefferson St
Pella, IA 50219
5152456425

Nurses-Practitioners

Vickie L Arkoma

1515 W Pleasant St
Knoxville, IA 50138
6418423101

Tony W Gorton

1515 W Pleasant St
Knoxville, IA 50138
6418423101

Kathy L Marlow

1515 W Pleasant St
Knoxville, IA 50138
6418423101

Mark A Mesick

1515 W Pleasant St
Knoxville, IA 50138
6418423101

Mary A Robb

1515 W Pleasant St
Knoxville, IA 50138
6418423101

Sandra S Stearns

1515 W Pleasant St
Knoxville, IA 50138
6418423101

Regina J Walker

1515 W Pleasant St
Knoxville, IA 50138
6418423101

Marsha Collins

405 Monroe St
Pella, IA 50219
6416283832

Diane L Dejong

405 Monroe St
Pella, IA 50219
6416283832

Karen K Emmert

405 Monroe St
Pella, IA 50219
6416283832

Andrew J Hunsinger

404 Jefferson St
Pella, IA 50219
6416283150

Timothy E Kinkade

404 Jefferson St
Pella, IA 50219
6416283150

Shannon J Krumm

404 Jefferson St
Pella, IA 50219
6416283150

Jennifer Lowry

2605 Washington St
Pella, IA 50219
6416209119

David J Mc Farland

404 Jefferson St
Pella, IA 50219
6416283150

Susan Thompson

404 Jefferson St
Pella, IA 50219
5152456425

Clinics

KHC - Clinic

Darci Fuller, ARNP
1202 West Howard Knoxville, IA 50138
641-828-7211

KHC - Clinic

Natalie Rowley, PA
1202 West Howard Knoxville, IA 50138
641-828-7211

KHC - Melcher Clinic

Laurie Goff, ARNP
113 North Main St Melcher, IA 50163
641-947-2121

KHC - Pleasantville Clinic

Brandi Booth, ARNP
104 North Washington St. Pleasantville, IA
50225
515-848-3113

Knoxville- Capstone Beh. Healthcare

Casie Riney, PA-C
104 S. 6th Street Knoxville, IA 50138
641-842-4925

PRHC - Clinic

Julie Lautenhach, PA-C
405 Monroe Pella, IA 50219
641-621-2407

PRHC - Clinic

Jennifer Wadle, PA-C
405 Monroe Pella, IA 50219
641-621-2406

PRHC - Knox & Bussey Clinics

Brad Beattie, PA-C
411 Merrill St Bussey, IA 50044
641-944-5813

PRHC - Monroe & Sully Clinic

Diane DeJong, PA-C
100 East Sherman Monroe, IA 50170
641-259-2155

PRHC - Ottumwa Clinic

Melissa Gingrich, WHNP- BC
920 N. Quincy Ave Ottumwa, IA 52501
641-455-5200

PRHC - Ottumwa Clinic

Heather Upset, PA-C
920 N. Quincy Ave Ottumwa, IA 52501
641-455-5200

PRHC - Pella & Bussey Clinic

Marsha Collins, CDE, PA-C

405 Monroe Pella, IA 50219
641-621-2200

PRHC - Sully Clinic

Leah Bruxvoort, ARNP
704 Third Street Sully, IA 50251
641-594-3150

PRHC - Sully Clinic

Amanda Van Wyk, PA-C
704 Third Street Sully, IA 50251
641-944-5813

PRHC - Vermeer Clinic

Sheila Punt, ARNP
1210 Vermeer Road East Pella, IA 5021
641-621-7670

PRHC - Vermeer Clinic

Elizabeth Stamper, ARNP
1210 Vermeer Road East Pella, IA 5021
641-621-7670

PRHC - Vermeer Clinic

Bethanne Stevens, ARNP
1210 Vermeer Road East Pella, IA 5021
641-621-7670

Dentists**Allen Family Dentistry**

Dr. Jeffery Allen, DDS
839 Broadway, and Pella, IA 50219
641-628-1121 F: 641-620-1035
jfadds@iowatelecom.net

Dahm Dental

Dr. Jeffery Dahm, DDS
2018 Washington Pella, IA 50219
641-628-2468 F: 641-628-8247
jdshmds@iowatelecom.net

Dental Design

Dr. Denise Neumann, DDS
401 E. Robinson St Knoxville, IA 50138
641-828-8778 F: 641-828-9058

Dental Design

Dr. Lisa Holst, DDS
401 E. Robinson St Knoxville, IA 50138
641-828-8778 F: 641-828-9058

Family Dentistry

Dr. Travis Egesadal, DDS
112 S First Knoxville, IA 50138
641-842-5288 F: 641-828-8171

Pella Family Dentists

Dr. David Barnes, DDS
715 Main Street Pella, IA 50219
641-628-2671 F: 641-628-8914
ddspcbarbh@iowatelecom.net

Pella Family Dentists

Dr. Joseph Van Ee, DDS
715 Main Street Pella, IA 50219
641-628-2671 F: 641-628-8914
ddspcbarbh@iowatelecom.net

Pella Family Dentists

Dr. Micah VerMeer, DDS
715 Main Street Pella, IA 50219
641-628-2671 F: 641-628-8914
ddspcbarbh@iowatelecom.net

Recker Dental Care

Dr. Eric Recker, DDS
2114 Washington Pella, IA 50219
641-628-1604 F: 641-628-2075

Recker Dental Care

Dr. Leigh Rasmussen, DDS
2114 Washington Pella, IA 50219
641-628-1604 F: 641-628-2075

Recker Dental Care

Dr. Mark Recker, DDS
2114 Washington Pella, IA 50219
641-628-1604 F: 641-628-2075

Stone Ridge Dental

Dr. Thomas Mohr, DDS
1008 West Pleasant St Pleasantville, IA 50225
515-848-3691 F: 515-848-3692

Dr. Greg Vannucci, DDS

2601 Washington Pella, IA 50219
641-628-2011 F: 641-683-4616
Only there every Wed

Dr. Steven Mott, DDS

211 S Second Knoxville, IA 50138
641-828-7777
bakirk50@gmail.com

Dr. Todd Lundy, DDS

112 S. First Street Knoxville, IA 50138
641-842-2683 F: 641-828-2003

Home Care Agencies**Harden Home Care**

Nick Stracke, Administrator
213 E. Main St. Su 102 Knoxville, IA 50138
1-800-771-7440 F: 1-866-428-1206
nstracke@hardenhealthcare.com

Pella Home Health Care

Nancy Willer, Director
1119 E. 2nd Street Pella, IA 50219
641-628-6638 F: 641-628-6664
nwiller@pellahealth.org

Quality Home Care

Donna Parker/Mary Jo Noftsgger, Co-Owners
101 E. Marion Knoxville, IA 50138
641-828-7889 F: 641-828-6119
qhcp@iowatelecom.net

Iowa Home Care

Gina Vos, Branch Manager
2521 Washington St Pella, IA 50219
641-620-1528 F: 641-628-4749

Marion County Public Health

Kim Dorn, Director
2003 N Lincoln Knoxville, IA 50138
641-828-2238 F: 641-842-3442

Nursing Home/Assisted Living**Christian Opportunity Center**

Rod Braun, Director
1553 Broadway Pella, IA 50219
641-628-1162
rbraun@christianopportunity.org

Hearthstone

Dot Beason, Director of Home Services
608 E. 2nd Street Pella, IA 50219
641-628-1244
dbeason@wesleylife.org

Griffin Nursing & Rehab Center

Connie Richards, Administrator
606 N.7th Street Knoxville, IA 50138
641-842-2187 F: 641-842-3527
con.richards@yahoo.com

Locust Hill Assisted Living

Peggy Adkisson, Owner
1173 Hwy 14 Knoxville, IA 50138
641-842-4638 F: 641-842-7249
adkisson@iowatelecom.net

Marion County Care Facility

Angela Smith, New Director/Administer
1111 Newbold Knoxville, IA 50138
641-828-0620 F: 641-828-0628
asmith@communitycareinc.net

Park Lane Village Assisted Living

Kristi Zellmer, Administrator
908 S. Park Lane Knoxville, IA 50138
641-828-7878 F: 641-828-2184
kzellmer@parklaneal.com

Pella Regional LTC @ PRHC

Mary Jo Foster, Supervisor
404 Jefferson Street Pella, IA 50219
641-628-2331
mfoster@pellahealth.org

Hilltop Manor - PRHC

Lori Garrard, Administrator
408 Jefferson Street Pella, IA 50219
641-628-1381
lgarrard@pellahealth.org

Pleasant Care

Matt Edwards, Administrator
909 N. State Street Pleasantville, IA 50225
515-628-8260 F: 515-848-5596
pleasant@ahahealthcare.com

Vriendschap Village

Brenda Colvin, Administrator
2602 Fifield Rd Pella, IA 50219
641-628-8260 F: 641-628-4259
bcolvin@watermarkcommunities.com

West Ridge Nursing Center

Rochelle Thompson, Administrator
1904 W. Howard Knoxville, IA 50138
641-842-3153 F: 641-828-7082
rthompson@careinitiatives.org

Knoxville Residential

Deena Bonnett, Director of Clinical Services
205 N Iowa St. Knoxville, IA 50138
641-842-4618

d.bonnett@yahoo.com

HCI Care Services: Hospice of Central Iowa

Char Yoder, Director
213 E Main St #103 Knoxville, IA 50138
641-842-4312

Hospice of Pella

505 Union Street Pella, IA 50219
641-620-5050

Helping Hands

Chuck Galezzi, Director
117 E. Main Street Knoxville, IA 50138
641-842-6933

Veterans Care**US Veterans Medical Center**

Larue Beth Westemeyer DO
1515 W Pleasant St
Knoxville, IA 50138
6418423101

VA Medical Center

Neeraja Kakade MD
1515 W Pleasant St
Knoxville, IA 50138
6418423101

VA Central IA Healthcare System

Samaroo Jaipaul MD
1515 W Pleasant St
Knoxville, IA 50138
6418285020

VA Central IA Healthcare System

Usha Jaipaul MD
1515 W Pleasant St
Knoxville, IA 50138
6418285015

V. Detail Exhibits

[VVV Research & Development INC]

Patient Origin & Access

[VVV Research & Development INC]

Town Hall Attendees Notes & Feedback

[VVV Research & Development INC]

Knoxville Hospital & Clinics CHNA Roundtable Meeting Date: April 11, 2013 Fifty Nine attendees of 294 PSA

	59					
Category	Attend	Lastname	Firstname	Title	Organization	Address/City/ST/Zip
	1	Applegate	Mary Jane		KHC	1002 S. Lincoln Knoxville IA 50138
	1	Atkins	Cindy		Pella Regil Health Center	404 Jefferson St Pella IA 50219
	1	Beason	Dot		Hearth Stove Ministry	607 E 3rd Pella, IA
Local clergy and congregational	1	Brady	Doug	Pastor	Living Word Fellowship	321 E. Robinson Street - Knoxville, IA - 50138
PRESS (Paper, TV, Radio)	1	Butler	Jim	General Manager	KNIA/KRLS Radio Station	1610 N. Lincoln Street
	1	Buttell	Christine		Knoxville Hospital	1002 South Lincoln, Knoxville, IA 50138
Public health officials.	1	Cecil	Rachel	Maternal & Child Health Program	Marion Co. Public Health Dept.	2003 N. Lincoln Street, Box 152 - Knoxville, IA - 50138
Presidents or chairs of civic or service	1	Crabbs	Lisa	Executive Director	Habitat for Humanity	1600 S. Lincoln Street, Box 220 - Knoxville, IA - 50138
Pharmacy	1	Crossett	Lisa	Pharmacist/Manager	Medicap Pharmacy	901 W. Pleasant Street - Knoxville, IA - 50138
The hospital organization's board	1	DeVore	Jim	Trustee	Knoxville Hospital & Clinics	1967 W. Jackson Street - Knoxville, IA - 50138
Public health officials.	1	Dorn	Kim	Public Health Director	Marion Co. Public Health Dept.	2003 N. Lincoln Street, Box 152 - Knoxville, IA - 50138
	1	Duimstra	Ashlee		KHS	PO Box 1185 Monroe, IA 50170
Public health officials.	1	Ellis	Diane	Hawk-I Coordinator	Marion Co. Public Health Dept.	2003 N. Lincoln Street, Box 152 - Knoxville, IA - 50138
City/Community planners and	1	Feik	Dylan	Assistant City Manager	City of Knoxville	305 S. Third Street - Knoxville, IA - 50138
Public health officials.	1	Frank	Cory	Environmental Health Manager	Marion Co. Public Health Dept.	2003 N. Lincoln Street, Box 152 - Knoxville, IA - 50138
	1	French	Lisa		KHC	314 W South St Knoxville, IA 50138
Other health professionals.	1	Friesen	Michella	Sexual Assault Response Team	Crisis Intervention Services	500 High Avenue W - Oskaloosa, IA - 52577
Other health professionals.	1	Garland	Cheryl	MS, NCC, LMHC, Clinical Director,	Integrative Counseling Solutions,	1200 Valley West Drive, Suite 302 - West Des Moines, IA - 50266
PRESS (Paper, TV, Radio)	1	Gernes	Aaron	Let's Talk	KNIA/KRLS Radio Station	1610 N. Lincoln Street
	1	Goff	Karen		Board of Health	1675 Oregon Dr. Knoxville, IA 50138
	1	Hamilton-Beyer	Maggie		KHC	1002 S. Lincoln Knoxville IA 50138
	1	Hoke	Lynette		Weiler	P.O. Box 289 Knoxville, IA 50138
Dentists	2	Holst	Lisa	Dentist	Dental Designs	401 E. Robinson Street - Knoxville, IA - 50138
	1	Jensen	John			1414 Hobart St. Knoxville
	1	Jensen	Kay			1414 Hobart St. Knoxville
Education officials and staff - school	1	Jones	Carolyn	High School Dean	Knoxville Community Schools	1811 W. Madison Street - Knoxville, IA - 50138
	1	Kraber	Andy			1461 North Shore Dr, Knoxville, IA 50138
	1	Kraber	Karen			1461 North Shore Dr, Knoxville, IA 50138
	1	Maddison	Tina		Marion County Public Health	2003 N Lincoln PO Box 152 Knoxville, IA 50138
Public health officials.	1	Martin	Lisa	WIC Manager	Marion Co. Public Health Dept.	2003 N. Lincoln Street, Box 152 - Knoxville, IA - 50138
Presidents or chairs of civic or service	2	Mater	Brenda	Contact	Beta Sigma Phi - Iowa Phi Masters	1012 E. Competine, #302 - Knoxville, IA - 50138
Public health officials.	1	McBurney	Katie	RDH, I-Smile Coordinator	Marion Co. Public Health Dept.	2003 N. Lincoln Street, Box 152 - Knoxville, IA - 50138
Leaders in other not-for-profit health care	1	Meuzelaar	Angela	Home Care Coordinator	Hearthstone, A Ministry of Wesley	607 E. 3rd Street - Pella, IA - 50219
	1	Miller	Maureen		Knoxville Journal Express	122 e Robinson Knoxville IA 50138
	1	Mohler	Bridget		Marion County Public Health	204 Edwards Bussy, IA 50044
Education officials and staff - school	1	Montgomery	Mike	Principal - East Elementary	Knoxville Community Schools	614 E. Washington Street - Knoxville, IA - 50138
	1	Murphy	Mary Jane		SHIIP (Senior Health Insurance	202 S Park Lane Dr.
	1	Murphy	Miles		SHIIP (Senior Health Insurance	202 S Park Lane Dr. Knoxville IA 50138
Local clergy and congregational	1	Murphy-Ceradsky	Donna	Pastor	Christian Church Disciples of Chris	308 W. Dallas Street - Pleasantville, IA - 50225
	1	Nelsen	Katrina		KHC	1002 S. Lincoln Knoxville IA 50138
	1	Pearson	Daphne		Medicap	814 Streeter, Knoxville
	1	Richardson	Ryan		Knoxville High School	1214 W. Robinson St. Knoxville, IA 50138

Knoxville Hospital & Clinics CHNA Roundtable Meeting Date: April 11, 2013 Fifty Nine attendees of 294 PSA

	59					
Category	Attend	Lastname	Firstname	Title	Organization	Address/City/ST/Zip
	1	Sandholt	Jason		Sherriff Marion County	211 N. Godfrey Lane Knoxville IA 50138
Physicians.	1	Schaeffer	Bryon	MD	Knoxville Hospital & Clinics	1002 S. Lincoln Street - Knoxville, IA - 50138
Local clergy and congregational	1	Schmidt	Andrew	Pastor	Celebrate Community Church	1005 N. Lincoln Street - Knoxville, IA - 50138
Welfare and social service agency staff.	1	Sheridan	Bobbie Jo	LBSW, Substance Abuse Prevention	Employee & Family Resources	1446 Martin Luther King Jr. Pkwy - Des Moines, IA - 50314
	1	Sims	Brian		KHC	1002 S. Lincoln Knoxville IA 50138
	1	Stewart	Nancy		Marion County Public Health	2003 N Lincoln PO Box 152 Knoxville, IA 50138
Leaders in other not-for-profit health care	1	Stracke	Nick	Account Representative	Harden Home Health	213 E. Main Street, Suite 102 - Knoxville, IA - 50138
	1	Swanson	Jason		KHC	1702 Osceola Dr. Knoxville, IA 50138
	1	Swihart	Deb		KHC	701 W Middle St Knoxville IA
Presidents or chairs of civic or service	1	Van Donselaar	Larissa	Director	Knoxville Chamber of Commerce	309 E. Main Street - Knoxville, IA - 50138
Leaders in other not-for-profit health care	1	Van Roekel	Mary Jo	RN, BSN, OCN, Outreach Nsg Clinic	Pella Regional Health Center	1208 N. Lincoln Street - Knoxville, IA - 50138
	1	Vanttulzen	Judi		Marion County Public Health	2003 N Lincoln PO Box 152 Knoxville, IA 50138
	1	Waldmen-Williams	T		TWC Consulting LLC	1093 McKimber Dr. Knoxville, IA 50138
	1	Wright	Jimmie		Knoxville Hospital	113 N Roche Apt #3 Knoxville IA
Leaders in other not-for-profit health care	1	Yoder	Char		HCI	213 E. Main Street - Knoxville, IA - 50138

Community Health Needs Assessment Marion County, IA Strengths (Color cards) N=59

CODE1	CODE2	CODE3	Today: What are the strengths of our community that contribute to health ?
ACC	AMB	FIT	Access of care; Life flight/ambulance; rec center; free clinics
ACC	REC	NUTR/FAC	Access of care; recreation; farmers market; hospital up to date
ACC			Access to health care; quality of health care
ACC	REC	IMMU/DENT	Clinics; work out areas; walking paths; school shot days; school dental screenings
ACC			ease of access; timeliness in getting help
ACC	FIT	PREV	Free clinic and services; medical service; school; Fitness after 80; preventative service
ACC	EDU		Free clinic; education
ACC	SPEC		Physician access; specialists
ACC			variety of local services; good care and people
AMB/FIRE	REC	COMMU	Emergency response/fire and rescue; outdoor sport areas; good community involvement in events
BH	DENT	PNEO	New mental health providers; quality dental care; prenatal care
COMMU			caring people; active community
COMMU	REC	PRIM/PHAR	Community activities - parks and rec, sports; access to primary care; pharmacies
COMMU			Community pride; lack of violence
DOCS			Good providers
DOCS	PHAR	REC	Providers at clinic; pharmacy; rec center
DOCS			quality doctors
DOCS	FAC	SURG/SPEC	Strong doctor numbers; outstanding facilities; on-site surgeons; specialty providers
DOH			visible public health
ECON			Manufacturing business
EDU			Excellent schools
EMER	SUR	COMMU	24 hour ER doc coverage; surgeons on call; close proximity of helicopter; community involvement
EMER	DOCS		Good ER response; good doctors and support staff
FAM/WIC	HH	ENVIR/DOCS/ACC	Family support; WIC; Home visits; environmental health; good quality doctors; hospitals/clinics
FIT			good places to walk; Lake Red Rock; hospital
HH			Home care options
HH/HOSP	PRIM		Hospital; home health/hospice; primary care
INSU	ACC		Covering uninsured/underinsured youth; access to health care
NUTR	AMB	EDU/AGE/EC ON/HOUS	Access to quality food; ambulance services; great school district housing for seniors; median income; great industry; growing community; access to low income housing
PNEO			Prenatal health

**Community Health Needs Assessment
Marion County, IA Strengths (Color cards) N=59**

CODE1	CODE2	CODE3	Today: What are the strengths of our community that contribute to health ?
PRIM	REC		Committed primary care providers; rec center; high quality hospital
PRIM	PNEO		Good family doctors; mothers seeking prenatal care
PRIM	PHARM	CHIR/DENT	Primary care providers; pharmacies; chiropractic; dentists
REC			Rec center
REC	ACC	PNEO/DENT	Wellness center; activities for all ages; hospital availability; prenatal care dental care; free clinic
REC/DIAB	PREV	DOCS/COMM	Rec center; diabetes education; prevention good local physicians; hospital promotions
PRIM	DOH		2 hospitals; family practice providers; public health office
WIC/DOH	FIT/NUT R		2 hospitals; WIC program; public health; walking and exercise; farmers markets
DOH			Hospital willing to listen; public health department
EDU/WELL	WIC/FIT	NUTR/ACC	Strong hospital/programs/services; providers; school districts/programs; health education; WIC program; areas to walk; varied hours at clinic; farmers market

**Community Health Needs Assessment
Marion County, IA Improvements (Color cards) N=59**

CODE1	CODE2	CODE3	Today: What are the strengths of our community that contribute to health ?
ACC			More and better health services and resources
ACC			Weekend services - needed untrasound
BH	SUB	TPGR/ENV IR	Access to mental health resources; substance abuse prevention; teen pregnancy prevention; environmental health
BH	WELL	CANC	Better mental health services; better wellness program/education; better early cancer screenings
BH	COLLAB		Desperate need for mental health access wellness collaboration for community
BH	FAM	WELL/CAN C/PREV	Mental health access; birth control access; wellness programs - free or affordable; cancer screenings
BH	COLLAB	ACC/TECH /NUTR/FIT	Mental health access; coordination of care; cost of care; open up more access to care; technology for health improvement; healthier food choices; better access to healthy activities
BH	NUTR		Mental health care; lots of fast food
BH	FAM	DENT	Mental health providers and coverage; family planning services; more dentists accepting Medicaid
BH	SUB	TPGR/CAN C/HH/OBE S/ENVIR/ OBYN	Mental health resources; substance abuse; teen pregnancy; cancer; nursing home; obesity; physical environment; OB Doctors
BH			Mental health services
BH	ADAY		Mental health services; adult day care centers
BH		FIT	Mental health services; charity vs income level; 3 and fitness facilities
BH	SUB		Mental health services; substance abuse prevention
BH	CANC	COMMU/W ELL/PREV	Mental health system; Cancer screening; need increased understanding in community of core competencies for wellness; prevention focus
BH	POV	COLLAB	Mental health system; prevention of poverty; continuity of care
BH	FIT		Mental health; city owned rec center
BH	FAM/TPGR	POV/DHS/ WELL/DRU G	Mental health; family planning/education in schools (teen pregnancy); living conditions of young children DHS; healthy living; Abuse of medications/overprescribing
BH	SUB	SMOK	Mental health; substance abuse; smoking addiction; family support

**Community Health Needs Assessment
Marion County, IA Improvements (Color cards) N=59**

CODE1	CODE2	CODE3	Today: What are the strengths of our community that contribute to health ?
BH	WELL	ADAY	More access to mental health; focus on wellness for older adults day services
BH	WELL	OBES/CAN C/CHRON	More mental health services; need to increase options to promote wellness; obesity; need pain management; high cancer rate
BH	IMMU		More support for mental health; improve adolescent immunization
BH	CANC/IMMU	FAM	Need for mental health coverage; why is cancer so high; immunization rate; family planning
BH	TRANS		Need more mental health providers; transportation
COMMU			Cynical; no support groups
DOCS	OBGYN	BH	Need family practice with female OB; stronger mental health program
FAM			A family planning agency in the county
FAM	NUTR	ACC	Attitudes toward family planning/birth control; accessibility to healthy food; Pella does not offer varied hours
FAM	OBES	ACC/BH	Family planning; obesity rate; need to improve access to mental health
FAM	TPGR	FIT/NUTR	High school education on family planning and birth control; diet and exercise
FAM			Need family planning services; crisis intervention
IM	WELL	BH/AGE/TRANS	More internal medicine providers; wellness program within business and hospital; more mental health providers; elder care services; transportation
INSU	PREV	FIT/NUTR/SMOK/BH	Access to insurance for low income; improve the % of healthy behaviors - exercise, eating, smoking; mental health services for teens
INSU	ACC	WELL	Low cost or no cost wellness centers
NUTR	ACC		Too much fast food; Pella area needs varied hours days of week access to clinics
OBES	FIT	NUTR	Decrease obesity; health care costs; quality of life; physical activity and healthy eating
OBES	CANC	DENT/INSU	Obesity education; cancer prevention; access to dental care for uninsured
OBES	NUT/FIT/WELL	SMOK/BH	Obesity reduction; healthy eating education/choices at restaurants; exercise/wellness opportunities; bike paths; tobacco use; mental health access

**Community Health Needs Assessment
Marion County, IA Improvements (Color cards) N=59**

CODE1	CODE2	CODE3	Today: What are the strengths of our community that contribute to health ?
OBES/SMO K	BH	HH/FAM	Obesity; smoking; mental health services; nursing home services; family planning services
OCC	WELL/SMO K	DIAB/FIT	Occupational health doctors; wellness education available to business for smoking cessation, diabetes, exercise program
SPEC	COMMU	ACC/URG/ ADAY	More variety of services - specialists; community reception - better care elsewhere; improve weekend services; urgent care; adult day care
SPEC	ORTH	COMM	Need for more specialties - orthopedics; perceptions
SPEC	COMM	SUB/BH/T RANS	Need more specialties; community perception of value of local hospital; substance abuse treatment and prevention; mental health providers; transportation
VET	BH	OBES	Better programs for veterans; mental health programs; obesity
WELL	HH		Wellness program for family/spouses; nursing home weekly rounds

Marion Town Hall Notes 5:30—7:00 pm

In Attendance – 54 (Approx. 50% not from Knoxville)

In Attendance:

- **Parents**
- **Sherriff**
- **Caregivers**
- **Business Owners**
- **School**
- **Elected Officials**
- **Providers**
- **Nurses**
- **Doctors**
- **Pharmacy**
- **Hospital**
- **Home health/Rehab/Hospice**
- **Veterans**
- **Dentists**

NOTES: WHITE CARD

Roberts Woods Johnson

Tab 1 – Demographic Trends

Tab 2 – Economic/Business Trends

- Unemployment seems on trend

Tab 3 – Education Profile

- School Lunches moving toward healthy

Tab 4 – Maternal and Infant Population

- Smoking while pregnant is an issue

Tab 5 – Hospitalization / Providers

- Does the county need more doctors?
 - Occupational health
 - Pediatricians
 - Psychiatrists
 - More Primary Care Doctors

Tab 6 - Behavior Health Profiles

- Need more mental health

Tab 7 – Risk Indicators & Factors

- Lead and Radon data available

Tab 8 – Uninsured

- Uninsured rate seems underestimated

Tab 9 – Mortality Profile

- Major Causes of Concern
 - Cancer
 - Heart Disease
 - Diabetes

Tab 10 – Preventative Quality Measures

SURVEY RESULTS

COMMUNITY PERSPECTIVE QUESTIONS:

News / Trends

Strengths (Colored Cards)

- Rec Center activities and outdoor activities
- Farmers market
- Free clinic
- Teachers that bring in outside programs
- Quick access to medical services
- Life Flight
- Ongoing renovations and up-to-date equipment at hospital
- 2 hospitals
- good family support services
- dental care
- Outpatient and school based mental health
- Good quality doctors
- Visibility of health care providers
- Stable medical staff
- Involved community
- Preventative services for seniors
- Covering uninsured – charity care

Weaknesses / Areas of Improvement (White Cards)

1. Family planning (in high school – birth control) 13
2. Cancer 12
3. Specialist services (Psychiatry, G.I., Orthopedics, etc.) 13
4. Weekend Hospital service 4
5. Mental health (access, transportation, beds, education) 30
6. Substance Abuse (treatment and prevention) 16
7. Wellness Education (programs and screenings) 26
8. Healthy Restaurants 0
9. Community Perception about Health (communication) 14
10. Occupational Health Physician 1
11. Economic Development 5
12. Better Coordination of care among providers 5
13. Urgent Care 5
14. Adult Day Care 7
15. Veterans Care 1
16. Uninsured Dental Care 5
17. Expand Medicaid 2
18. E.R. Doctors 2
19. Trails and Sidewalks 19
20. Mammography 2
21. Community Buy-in for Prevention 17

Public Notice & Invitation

[VVV Research & Development INC]

Knoxville Hospital & Clinics to Assess Community Health Needs

Date: February 23, 2013

For Immediate Release

Over the next three months Knoxville Hospital & Clinics will partner with Marion County Public Health to conduct a comprehensive community health needs assessment. This information will be used to guide our community in addressing current and future healthcare needs. Vince Vandelaar MBA from VVV Research & Development INC, an independent health research and consulting firm from Olathe KS, has been retained to conduct and complete this assessment.

“We hope that the residents of Marion County will take advantage of this opportunity to provide input into the future of healthcare and services we offer”, comments Kevin Kincaid, CEO.

All assessment information obtained will assist local health care and related service providers, community organizations, policymakers, and residents in making informed decisions on improving access and minimizing barriers to care, creating efficiencies in the delivery of care, and participating in the development of local health care improvement strategies.

In early March 2013, approximately 1,000 families from our service area will receive a comprehensive healthcare survey in the mail. We are asking those who receive this survey to please take the time to complete assessment. **Note: If you prefer to fill out a survey online, please enter the follow address into your browser:**
<https://www.surveymonkey.com/s/CHNAknoxville>

A public Town Hall meeting will also be held on Thursday April 11th at the Knoxville High School Cafeteria to review CHNA findings and prioritize health needs.

From: CEO
Date: March 2013
To: Staff, volunteers, physicians and Board
Subject: CHNA online survey 2013

Knoxville Hospital & Clinics and Marion County Public Health are in the process of collecting community views regarding healthcare delivery for our service area. Your feedback & suggestions are very important to collect in order to complete our community health needs assessment and implementation plan.

Therefore I would ask that you take time to complete a confidential online survey, if you did not receive a paper survey in the mail.

Please click the following link to complete:

<https://www.surveymonkey.com/s/CHNAknoxville>

I assure you all responses are confidential. The due date for survey completion is Friday March 29th. Thank you in advance for your time and support in participating with this important request.

**Sincerely,
Kevin Kincaid
CEO**

Knoxville Hospital & Clinics Logo

Date: March 18, 2013

Dear Community Member,

Knoxville Hospital & Clinic and Marion County Public Health are partnering to perform a Community Health Needs Assessment. Our goal is to gather input from people throughout our service area regarding their perceptions of the current state of our population's health and what they believe are the most important health needs that our communities need to address.

We are inviting you to attend this very important Marion County Town Hall meeting at which we will conduct roundtable discussion, review basic community health needs assessment information and rank our community priorities. We have retained the services Vince Vandehaar of VVV Research and Development, Inc. from Olathe, KS, to facilitate this meeting and prepare our report.

Your input is valuable and will be incorporated into our final report. Please join us on Wednesday, April 11th, from 5:30-7:00pm at the Knoxville High School for this important meeting. A light dinner will be served that evening.

We look forward to seeing you at the Town Hall meeting, and appreciate your input.

Sincerely,

Kevin Kincaid

President & CEO

Marion County Public Health

For immediate release

Contact:

Knoxville Hospital & Clinics and Marion County Public Health to host community health needs town hall Thursday April 11th

In order to gauge the overall health needs of our community, **Knoxville Hospital & Clinics in conjunction with Marion County Public Health** invites the public to participate in a Community Health Needs Assessment Town Hall roundtable on Thursday April 11th from 5:30 - 7 p.m. at the Knoxville High School.

This event is being held to identify and prioritize the health needs. Feedback from the event will also serve to fulfill both federal and state mandates.

"This Town Hall meeting will be an opportunity for you to share both your experiences and suggestions to improve health care delivery within our county," said **Kevin Kincaid**, Knoxville Hospital & Clinics CEO. "We encourage your attendance, as your input is very valuable to build a healthy community."

A light dinner will be served. Vince Vandelaar, principal consultant at VV Research and Development, Inc. from Olathe, Kansas, has been hired to facilitate this meeting.

##

Detail Primary Research Primary Service Area

[VVV Research & Development INC]



March 2013

Dear Knoxville IA area residents:

Over the next three months Knoxville Hospital & Clinic and Marion County IA Public Health will be conducting a community health needs assessment (CHNA). In order to gather this information, a confidential survey has been developed (for research purposes only) by VVV Research & Development INC, an Olathe KS area based marketing research consulting firm. We value your input and ask that you take the time to complete the enclosed survey.

Results of this assessment will be presented at an upcoming CHNA Town Hall on Thursday, April 11th at the Knoxville High School Commons, 1811 West Madison from 5:30-7:00 p.m. A light evening meal will also be provided to participants.

Note: If you prefer to fill out a survey online, please enter the follow address into your browser: <https://www.surveymonkey.com/s/CHNAknoxville>

**Thank you in advance for your help in completing this confidential survey.
The survey return deadline is Friday, March 29, 2013.**

Sincerely,

***Vince V. Vandelaar MBA
Managing Consultant
VVV Research &
Development INC
Olathe KS 66061
913-302-7264***

***Kevin Kincaid
CEO
Knoxville Hospital & Clinics
Knoxville, IA 50138
641-842-1401***

***Kim Dorn
Public Health Director
Marion Co Public Health
Knoxville, IA 50138
641-828-2238***

Community Health Needs Assessment 2013 – Knoxville IA

Knoxville Hospital & Clinics and Marion County IA Public Health are working together to conduct a community health needs assessment. Please take time to provide us your input by completing this confidential survey today.

If you prefer, you can complete this same survey online by typing the following link into your browser:

<https://www.surveymonkey.com/s/CHNAknoxville> Completed surveys must be received by **Friday, March 29th, 2013.**

Part I: HEALTHCARE PERCEPTIONS & SATISFACTION

1. In general, how would you rate the overall quality of the healthcare delivered to your community?

	Very Good	Good	Fair	Poor	Very Poor
OVERALL Quality of Care	<input type="radio"/>	<input type="radio"/>	<input type="radio"/>	<input type="radio"/>	<input type="radio"/>

2. How satisfied are you with each of the following: (Check one box per row)

	Very Good	Good	Fair	Poor	Very Poor	N/A
a) Ambulance Service	<input type="radio"/>	<input type="radio"/>	<input type="radio"/>	<input type="radio"/>	<input type="radio"/>	<input type="radio"/>
b) Child Care	<input type="radio"/>	<input type="radio"/>	<input type="radio"/>	<input type="radio"/>	<input type="radio"/>	<input type="radio"/>
c) Chiropractor	<input type="radio"/>	<input type="radio"/>	<input type="radio"/>	<input type="radio"/>	<input type="radio"/>	<input type="radio"/>
d) Dentists	<input type="radio"/>	<input type="radio"/>	<input type="radio"/>	<input type="radio"/>	<input type="radio"/>	<input type="radio"/>
e) Emergency Room	<input type="radio"/>	<input type="radio"/>	<input type="radio"/>	<input type="radio"/>	<input type="radio"/>	<input type="radio"/>
f) Eye Doctor / Optometrist	<input type="radio"/>	<input type="radio"/>	<input type="radio"/>	<input type="radio"/>	<input type="radio"/>	<input type="radio"/>
g) Family Planning Services	<input type="radio"/>	<input type="radio"/>	<input type="radio"/>	<input type="radio"/>	<input type="radio"/>	<input type="radio"/>
h) Home Health	<input type="radio"/>	<input type="radio"/>	<input type="radio"/>	<input type="radio"/>	<input type="radio"/>	<input type="radio"/>
i) Hospice	<input type="radio"/>	<input type="radio"/>	<input type="radio"/>	<input type="radio"/>	<input type="radio"/>	<input type="radio"/>
j) Inpatient Services	<input type="radio"/>	<input type="radio"/>	<input type="radio"/>	<input type="radio"/>	<input type="radio"/>	<input type="radio"/>
k) Mental Health Services	<input type="radio"/>	<input type="radio"/>	<input type="radio"/>	<input type="radio"/>	<input type="radio"/>	<input type="radio"/>
l) Nursing Home	<input type="radio"/>	<input type="radio"/>	<input type="radio"/>	<input type="radio"/>	<input type="radio"/>	<input type="radio"/>
m) Outpatient Services	<input type="radio"/>	<input type="radio"/>	<input type="radio"/>	<input type="radio"/>	<input type="radio"/>	<input type="radio"/>
n) Pharmacy	<input type="radio"/>	<input type="radio"/>	<input type="radio"/>	<input type="radio"/>	<input type="radio"/>	<input type="radio"/>
o) Primary Care	<input type="radio"/>	<input type="radio"/>	<input type="radio"/>	<input type="radio"/>	<input type="radio"/>	<input type="radio"/>
p) Public Health Department	<input type="radio"/>	<input type="radio"/>	<input type="radio"/>	<input type="radio"/>	<input type="radio"/>	<input type="radio"/>
q) School Nurse	<input type="radio"/>	<input type="radio"/>	<input type="radio"/>	<input type="radio"/>	<input type="radio"/>	<input type="radio"/>
r) Specialist Physician Care	<input type="radio"/>	<input type="radio"/>	<input type="radio"/>	<input type="radio"/>	<input type="radio"/>	<input type="radio"/>

Other (please specify)

3. Over the past 2 years, did you or your household receive health care services outside of your county?

Yes No

If yes, please specify the healthcare services you received

4. Are there healthcare services in your community / neighborhood that you feel need to be improved and / or changed? (Please be specific)

5. In your opinion, how much of a problem are the following causes of diseases or disability in your community? (Check one box per row)

	Not a Problem	Somewhat of a Problem	Major Problem	Don't Know
a) Cancer	<input type="radio"/>	<input type="radio"/>	<input type="radio"/>	<input type="radio"/>
b) Diabetes	<input type="radio"/>	<input type="radio"/>	<input type="radio"/>	<input type="radio"/>
c) Substance Abuse	<input type="radio"/>	<input type="radio"/>	<input type="radio"/>	<input type="radio"/>
d) Heart Disease	<input type="radio"/>	<input type="radio"/>	<input type="radio"/>	<input type="radio"/>
e) Sexual Transmitted Diseases	<input type="radio"/>	<input type="radio"/>	<input type="radio"/>	<input type="radio"/>
f) Mental Disorders	<input type="radio"/>	<input type="radio"/>	<input type="radio"/>	<input type="radio"/>
g) Obesity	<input type="radio"/>	<input type="radio"/>	<input type="radio"/>	<input type="radio"/>
h) Pneumonia / Flu	<input type="radio"/>	<input type="radio"/>	<input type="radio"/>	<input type="radio"/>
i) Respiratory Disease	<input type="radio"/>	<input type="radio"/>	<input type="radio"/>	<input type="radio"/>
j) Stroke	<input type="radio"/>	<input type="radio"/>	<input type="radio"/>	<input type="radio"/>
k) Suicide	<input type="radio"/>	<input type="radio"/>	<input type="radio"/>	<input type="radio"/>
l) Trauma	<input type="radio"/>	<input type="radio"/>	<input type="radio"/>	<input type="radio"/>

Other (please specify)

6. How well do you feel our local health care providers are doing in addressing the health needs of the following age groups? (Check one box per row)

	Very Good	Good	Fair	Poor	Very Poor	N/A
Infants	<input type="radio"/>	<input type="radio"/>	<input type="radio"/>	<input type="radio"/>	<input type="radio"/>	<input type="radio"/>
Age 1 - 12	<input type="radio"/>	<input type="radio"/>	<input type="radio"/>	<input type="radio"/>	<input type="radio"/>	<input type="radio"/>
Age 13 - 17	<input type="radio"/>	<input type="radio"/>	<input type="radio"/>	<input type="radio"/>	<input type="radio"/>	<input type="radio"/>
Age 18 - 44	<input type="radio"/>	<input type="radio"/>	<input type="radio"/>	<input type="radio"/>	<input type="radio"/>	<input type="radio"/>
Age 45 - 64	<input type="radio"/>	<input type="radio"/>	<input type="radio"/>	<input type="radio"/>	<input type="radio"/>	<input type="radio"/>
Age 65 - 84	<input type="radio"/>	<input type="radio"/>	<input type="radio"/>	<input type="radio"/>	<input type="radio"/>	<input type="radio"/>
Over 85	<input type="radio"/>	<input type="radio"/>	<input type="radio"/>	<input type="radio"/>	<input type="radio"/>	<input type="radio"/>

7. Does our community need any additional healthcare providers?

Yes No

If yes, please specify what is needed:

8. In your opinion, what areas need additional education or attention in our community? (Check all that apply)

- | | | |
|---|---|---|
| <input type="checkbox"/> a) Abuse / Violence | <input type="checkbox"/> i) Mental Illness | <input type="checkbox"/> q) Sexually Transmitted Diseases |
| <input type="checkbox"/> b) Aging (Dementia) | <input type="checkbox"/> j) Neglect | <input type="checkbox"/> r) Suicide |
| <input type="checkbox"/> c) Alcohol | <input type="checkbox"/> k) Nutrition | <input type="checkbox"/> s) Teen Pregnancy |
| <input type="checkbox"/> d) Alternative Medicine | <input type="checkbox"/> l) Obesity | <input type="checkbox"/> t) Tobacco Use |
| <input type="checkbox"/> e) Child Care | <input type="checkbox"/> m) Ozone | <input type="checkbox"/> u) Uninsured |
| <input type="checkbox"/> f) Chronic Diseases | <input type="checkbox"/> n) Pain Management | <input type="checkbox"/> v) Vaccinations |
| <input type="checkbox"/> g) Family Planning / Birth Control | <input type="checkbox"/> o) Poverty | <input type="checkbox"/> w) Water Quality |
| <input type="checkbox"/> h) Lead Exposure | <input type="checkbox"/> p) Preventative Healthcare | <input type="checkbox"/> x) Wellness Education |

Other (please specify)

PART II: YOUR HEALTH PRACTICES

9. In general, how would you best describe your health? (Choose one)

- Very Good
 Good
 Fair
 Poor
 Very Poor

10. Compared to a year ago, how would you rate your overall health now?

- Much better than a year ago
 About the same
 Much Worse than a year ago

11. Does your household have a provider you use for primary care?

- Yes
 No

If Yes, Please give Physician's name / Specialty / City

12. Have you had a physical in the past 12 months?

- Yes
 No

If no, why not? (Be specific)

13. Check which health practices you follow: (Check one box per row)

	Yes	No	N/A
If over 50, have you had a colonoscopy?	<input type="radio"/>	<input type="radio"/>	<input type="radio"/>
If male over 50, do you have annual prostate exams?	<input type="radio"/>	<input type="radio"/>	<input type="radio"/>
If female over 40, do you have annual mammograms?	<input type="radio"/>	<input type="radio"/>	<input type="radio"/>
If female, do you have a pap smear every other year?	<input type="radio"/>	<input type="radio"/>	<input type="radio"/>
Do you get 2.5 hours a week of moderately intense physical activity?	<input type="radio"/>	<input type="radio"/>	<input type="radio"/>

14. Please complete sentence below. Are you:

	Yes	No	N/A
a) Eating right (Daily5+servings-fruits/veg/wheat)?	<input type="radio"/>	<input type="radio"/>	<input type="radio"/>
b) Using tobacco products weekly?	<input type="radio"/>	<input type="radio"/>	<input type="radio"/>
c) Exercising 2-3 times weekly?	<input type="radio"/>	<input type="radio"/>	<input type="radio"/>
d) Consuming alcohol (more than 1 drink daily)?	<input type="radio"/>	<input type="radio"/>	<input type="radio"/>
e) Receiving an annual flu shot?	<input type="radio"/>	<input type="radio"/>	<input type="radio"/>

Part III: A LITTLE MORE ABOUT YOU

15. What is your age?

- Under 18 18 - 44 45 - 64 65 - 74 Over 75

16. Your gender?

- Male Female

17. How would you identify yourself?

- a) Caucasian / White American d) American Indian / Native Alaskan
 b) African American / Black American e) Asian American / Pacific Islander
 c) Latino / Hispanic American f) Multicultural / Multiracial

Other (please specify)

18. How would you describe your household?

- Single Married with children no longer at home
 Married Divorced
 Married with children at home Other _____

19. Regarding your health insurance coverage, what type of health coverage is your primary plan? (Choose one)

- Private Insurance you purchased Covered by Employer (employer pays total cost)
 Medicare Covered by Employer (you & employer share cost)
 Medicaid No Coverage (Uninsured)

Other (please specify)

20. What is your home 5 digit zip code?

Thank you. Please return completed survey with enclosed business reply envelope.

Community Healthcare Needs Assessment 2013 - Demographics				
What is your age?	KS CHNA NORM N=5886	%	Knoxville N=275	%
Under 18 (omit)	4	0.1%	0	0.0%
18 - 44	1490	28.5%	85	36.2%
45 - 64	2427	46.4%	115	48.9%
65 - 74	701	13.4%	20	8.5%
Over 75	614	11.7%	15	6.4%
Totals	5236	100.0%	235	100.0%
Your gender?	KS CHNA NORM N=5886	%	Knoxville N=275	%
Male	1293	25.4%	54	23.7%
Female	3804	74.6%	174	76.3%
Totals	5097	100.0%	228	100.0%
How would you identify yourself?	KS CHNA NORM N=2561	%	Knoxville N=275	%
a) Caucasian / White American	5051	96.3%	235	99.2%
b) African American / Black American	38	0.7%	1	0.4%
c) Latino / Hispanic American	45	0.9%	0	0.0%
d) American Indian / Native Alaskan	19	0.4%	0	0.0%
e) Asian American / Pacific Islander	24	0.5%	1	0.4%
f) Multicultural / Multiracial	25	0.5%	0	0.0%
Other (please specify)	45	0.9%	2	1.0%
Totals	5247	100.0%	206	0.0%
How would you describe your household?	KS CHNA NORM N=2561	%	Knoxville N=275	%
Single	836	16.0%	28	11.8%
Married	1178	22.5%	52	21.9%
Married with children at home	1421	27.2%	83	35.0%
Married with children no longer at home	1101	21.1%	42	17.7%
Divorced	335	6.4%	20	8.4%
Other	358	6.8%	12	5.1%
Totals	5229	100.0%	237	100.0%
Regarding your health insurance coverage..	KS CHNA NORM N=4235	%	Knoxville N=275	%
Private Insurance you purchased	677	12.4%	23	10.0%
Medicare	1027	18.8%	30	13.0%
Medicaid	74	1.4%	3	1.3%
Covered by Employer (employer pays total cost)	546	10.0%	28	12.2%
Covered by Employer (you & employer share cost)	2620	47.9%	138	60.0%
No Coverage (Uninsured)	195	3.6%	8	3.5%
Other (please specify)	331	6.1%	13	0.0%
Totals	5470	100.0%	243	100.0%

* Norm is composed of 15 CHNA community surveys from IA, KS and MO.

CHNA Report contact :



Vince Vandelaar, MBA
VVV Marketing & Development INC.
Adjunct Professor / Professional Healthcare
Marketing & Strategic Planning Consulting
Services

601 N Mahaffie, Olathe, KS 66061
(913) 302-7264 (C)
VVV@VandelaarMarketing.com

LinkedIn: [vandeelaar](#)
Website: VandelaarMarketing.com